

No.12040/28/2014-TRG(FTC/IR)
Government of India
Ministry of Personnel, Public Grievances and Pensions
Department of Personnel and Training
[Training Division]

Block-4, Old JNU Campus
New Mehrauli Road, New Delhi-67
Dated - June 11, 2014

TRAINING CIRCULAR

Subject: Group Training Course in "Sustainable Mining Development" to be held in Japan from September 21 to December 06, 2014 under the Technical Cooperation Programme of the Government of Japan.

The undersigned is directed to state that the Japan International Cooperation Agency (JICA) has invited applications for the above mentioned training programme to be held in Japan from September 21 to December 06, 2014 under the Technical Cooperation Programme of the Government of Japan.

2. This programme aims to provide basic knowledge and skills for environmental sustainable mining and recycling, which are the outputs of this programme in order to be shared and promoted among his/her organizations.

3. This programme is offered to the officers in the department of mining responsible for mining policies, facilitating mining projects including prevention of mining pollution and recycling in the government or governmental organization.

4. The applying organizations are expected to select those applicants who are presently engaged on making mining policies and managerial departments including mining development, prevention of mining pollution and recycling. The training is inadequate for oil, gas, coal or iron-ore development engineer or technician with more than 3 years of practical experience in the field of mining policy. The applicants should also be a bachelor of engineering/science or equivalent; should have competent command over spoken and written English; have a competent command of using PC; must be in good health (both physically and mentally) and must not be a part of military service.

5. In addition to above, the following information in respect of the nominated officers may please be mentioned while furnishing the nomination:-

- a) Whether attended any foreign training programme in the past? If so, the duration/detail thereof;
- b) Whether cleared from vigilance angle;
- c) Age;
- d) Whether working in North East State/J&K;
- e) A brief in 50-100 words justifying the nomination.

6. The course covers the cost of a round-trip air ticket between international airport designated by JICA and Japan; travel insurance from the time of arrival in Japan to departure from Japan; allowances for (accommodation, living expenses, outfit and shipping); expenses for JICA study tours and free medical care for participants who may fall ill after reaching Japan (costs relating to pre-existing illness, pregnancy, or dental treatment are not included).

...2/-

7. It is therefore requested that the nomination of suitable candidates may please be forwarded (in duplicate) in JICA's prescribed form (available in persmin.nic.in→DOPT→Training Wing→Circular→JICA) to this Department duly authenticated by the HOD of the concerned department in accordance with the eligibility criteria.

8. The applications should reach this Department through the Administrative Ministry/State Government not later than **July 18, 2014**. Nominations received after the prescribed date will not be considered. The details of the programme may be drawn from Ministry of Personnel, Public Grievances and Pensions' website (persmin.nic.in).



(N.K. Wadhwa)

Under Secretary to the Government of India

Tele.No.011-26165682

E-mail-ID naresh.wadhwa@nic.in

Copy to:

- a) The Secretary, Ministry of Mines, 3rd Floor, A Wing, Shastri Bhawan, New Delhi-110001
- b) The Chief Secretaries to all the State Governments/Union Territories(with request to circulate the same amongst their related Departments/Organizations),
- c) NIC with request to post the circular along with the JICA's circular on this Department's website.



GROUP AND REGION-FOCUSED TRAINING

GENERAL INFORMATION ON

Sustainable Mining Development **課題別研修「持続可能な鉱物資源開発管理」** ***JFY 2014***

NO. J14-04275 / ID. 1480882

Course Period in Japan: From September 21st, 2014 to December 6th, 2014

This information pertains to one of the Group and Region-Focused Training of the Japan International Cooperation Agency (JICA), which shall be implemented as part of the Official Development Assistance of the Government of Japan based on bilateral agreement between both Governments.

I. Concept

Background

Mineral resources are essential to industrial and economic activities, and it is quite important for resource rich countries to promote effective and sustainable development of natural resources.

Mining projects would not only promote mining-related industries but also create other benefits for society including improvement of infrastructure and basic social systems, economic development of rural area, and human resources development in various fields. On the other hand, we should pay attention to negative aspects such as deforestation and erosion, contamination of soil, groundwater and surface water. Therefore, it is also required to take appropriate measures for sustainable development.

It can be found that rapid increase of foreign or private investment in mining activities in developing countries. Those countries consider their mineral deposits to be important assets and the key for prosperity. At the same time, the governments continue to have the initiative on policy to promote mining and investment. To promote their mining development, the following can be listed: 1) planning of mining policies, 2) development of related laws, 3) improvement of administrative systems, 4) organization and publication of mining information, 5) infrastructure development and 6) development of human resources.

This Training Program is the course to study mining development from basic to application, particularly focusing on the government's role such as systematic legal systems and organizations as well as organizing mining information, mining policy and feasibility study, master plan, action plan, and follow-up, pollution control, environmental impact assessment and others,.

For what?

This program aims to provide basic knowledge and skills for environmental sustainable mining and recycling, which are the outputs of this program in order to be shared and promoted among his/her organizations.

For whom?

This program is offered to officers in the department of mining responsible for mining policies, facilitating mining projects including prevention of mining pollution and recycling in the government or governmental organization.

How?

Participants shall have opportunities in Japan to learn about efficient and environment-friendly mining and recycling through lectures, observations, exercises and discussions. Participants shall also formulate an action plan on dissemination activities of skills and knowledge gained from the training program in Japan.

II. Description

- 1. Title (J-No.): Sustainable Mining Development (J1404275)**
(except coal, oil, natural gas and iron ore)
- 2. Course Period in JAPAN**
September 21 to December 6, 2014
- 3. Target Regions or Countries**
Angola, Argentina, Botswana, Chile, Democratic Republic of the Congo, Fiji, India, Laos, Lesotho, Malawi, Myanmar, Papua New Guinea, Sudan, Uzbekistan, Zimbabwe
- 4. Eligible / Target Organization**
This program is designed for the government technical officer who are in-charged of mining policies, facilitating mining projects including prevention of mining pollution and recycling in the government or governmental organization.
- 5. Course Capacity (Upper limit of Participants)**
30 participants
- 6. Language to be used in this program:** English
- 7. Course Objective:**
The officers in charge of mining sector in the government of target countries obtain knowledge and skills on efficient and environment-friendly mining and recycling technology to promote sustainable mining activities.
- 8. Overall Goal**
The officers of the governments of target countries can: 1) apply learned knowledge and skills to minimize environmental impact, 2) make appropriate policies for sustainable development of mining activities in their countries and 3) contribute to economic development of their countries and resource importers.
- 9. Implementing Partner:**
International Institute for Mining Technology, JMEC (MINETEC)

10. Expected Module Output and Contents:

This program consists of the following components. Details on each component are given below:

(1) Preliminary Phase in a participant's home country (July 2014 to September 2014) <i>Participating organizations make required preparation for the Program in the respective country.</i>	
Expected Module Output	Activities
Country Report	Formulation and submission of Country Report A guideline of making Country Report is attached as ANNEX 1. The participants are required to make a power point file for presentation focusing on their challenges to be shared in this program.

(2) Core Phase in Japan (September 21, 2014 to December 6, 2014) <i>Participants dispatched by the organizations attend the Program implemented in Japan.</i>		
Expected Module Output	Subjects/Agendas	Methodology
To deepen understanding of the relationship between changes in the global resource logistics structure with the economic development of emerging countries and the importance of mineral resources as well as the relationship between changes in such trends concerning resources and resource-producing countries.	(1) To make a Presentation and discussion on the participants' country report on the situation and problems of mining sector in their countries.	Presentation
	(2) To learn the history about mineral resources development which has played an important role to contributes to modernization of the developed countries in the 19th and 20th centuries.	Lecture
	(3) To understand changes in the global resource logistics structure through economic development of emerging countries, the importance of metal resources such as copper, lead, zinc, nickel and other minor metals, as well as economic development conditions of resource-producing countries and consuming countries including Japan, through lectures on international economy and metal supply-demand prospect, resources development cases in developing countries, introduction to resource economy, etc.	Lecture
To learn knowledge and technology on mineral resource exploration, including satellite image	(1) To find suitable methods for resource exploration in the participants' home countries by learning exploration techniques through lectures and geological site observations.	Lecture / Observation

processing, as well as policy schemes and functions of resource-related organizations for improvement in resource discoverability.	(2) To understand techniques for the processes of ore dressing, refining and processing through lectures and site observations.	Lecture / Observation
	(3) To understand policy tools (theories and methods) to promote exploration through lectures on mining policies and observations at Geological Research Institutes of Japan, such as the National Institute of Advanced Industrial Science and Technology (AIST), etc.	Lecture / Observation
To understand the advantage (sustainability) of environment-friendly mining development planning, and the points of environmental impact assessment and guidance in such planning.	(1) To learn the history of mine pollution and the experience of controlling it in Japan to understand the economic and social risks of mine pollution. Especially to understand the fact that environmental considerations result in economically sustainable development.	Lecture
	(2) To understand environmental impact and environment-friendly methods of mining development through lectures on environmental regulations and legal systems in Japan, mine pollution prevention techniques and environmental assessment as well as observations at the mining wastewater treatment facilities of Matsuo Mine, etc.	Lecture/ Observation
	(3) To understand measures to reduce the effects on the environment through lectures on current conditions and techniques of recycling metals from waste as well as observations at recycling / environmental management facilities.	Lecture/ Observation
To learn financing mechanisms for mining projects in developing countries, as well as the current situation of industry in Japan.	(1) To understand economic assessment techniques, financing systems and funding methods for resources development through lectures on introduction to resource economy and public financing institutions in Japan (JOGMEC, JICA, and JBIC), etc.	Lecture
	(2) To learn the realities of the non-ferrous metal industry and to deepen understanding of guidelines for formulation of resources development strategies and project plans in Japan, through lectures given by lecturers at private non-ferrous metal companies as well as facility observation, and to strengthen coordination through exchange with those concerned.	Lecture/ Observation

Preparation and Presentation of Action Plan	<p>(1) Preparation of Action plan At the end of this program, participants will develop an action plan on how to share and promote skills and knowledge gained from this program. For the theme selection for the action plan, participants should reflect their country's challenges and issues mentioned in their country reports. For the preparation and presentation of actions plans, a) the outlines will be explained at the beginning of this course, b) a lecture and discussion will be held in the middle of this course, and c) consultations to individual trainees will be given by several commentators through e-mail or other means as needed.</p> <p>(2) Presentation of Action Plan</p>	Workshop Consultation Presentation
---	---	------------------------------------

(3) Finalization Phase in a participant's home country

(December 2014 to March 2015)

Participants with their organizations produce final outputs by making use of results brought back by participants. This phase marks the end of the Program.

Expected Module Output	Activities
To implement a dissemination plan	Participants are to implement the dissemination activities based on the action plan which was made during the program. Also, participants must submit the progress report within 3 months.

(1) ANNEX2 shows last year's course curriculum for your reference.

(2) ANNEX3 shows guideline of how to make Action Plan.

(3) MINETEC is going to contact participants before they are coming to Japan. Please clearly specify your E-mail address on application form to receive necessary information.

III. Conditions and Procedures for Application

1. Expectations for the Participating Organizations:

- (1) This program is designed primarily for organizations that intend to address specific issues or problems identified in their operation.
- (2) This program will be held in collaboration with relevant prominent organizations including Private Companies in Japan. These special features enable projects to meet specific requirements of applying organizations and effectively facilitate them toward solutions for issues and problems.
- (3) As this program is designed to facilitate organizations to come up with concrete solutions for their issues, participating organizations are expected to make due preparation before dispatching their participants to Japan by carrying out the activities of the Preliminary Phase described in section II -10 .
- (4) Participating organizations are also expected to make the best use of the results achieved by their participants in Japan by carrying out the activities of the Finalization Phase described in section II -10.

2. Nominee Qualifications:

Applying organizations are expected to select nominees who meet the following qualifications.

(1) Essential Qualifications

- 1) Current Duties: be officials working for the government or governmental organization, engaging on mining policies and managerial departments including mining development, prevention of mining pollution and recycling. The training is inadequate for oil, gas, coal or iron-ore development engineer or technician.
- 2) Experience in the relevant field: have more than 3 years' practical experience in the field of mining policy
- 3) Educational Background: bachelor of engineering / science or equivalent
- 4) Language: have a competent command of spoken and written English, especially reading comprehension, workshop includes active participation in discussions, action plan (interim report) development, thus requires high competence of English ability. Please attach an official certificate for English ability such as TOEFL, TOEIC etc, if possible)
- 5) PC skill: have a competent command of using PC
- 6) Health: must be in good health, both physically and mentally, to participate in the Program in Japan
- 7) Must not be serving any form of military service.

(2) Recommendable Qualifications

- 1) Age: be under forty (40) years old

3. Required Documents for Application

(1) **Application Form:** The Application Form is available at **the JICA office (or the Embassy of Japan).**

*Pregnancy

Pregnant participants are strictly requested to attach the following documents in order to minimize the risk for their health.

1. letter of the participant's consent to bear economic and physical risks
2. letter of consent from the participant's supervisor
3. doctor's letter with permission of her training participation.

Please ask JICA Staff for the details.

(2) **Photocopy of passport:** to be submitted with the application form, if you possess your passport which you will carry when entering Japan for this program. If not, you are requested to submit its photocopy as soon as you obtain it.

*Photocopy should include the followings:

Name, Date of birth, Nationality, Sex, Passport number and Expire date.

(3) **Nominee's English Score Sheet:** to be submitted with the application form. If you have any official documentation of English ability (e.g., TOEFL, TOEIC, IELTS), please attach it (or a copy) to the application form.

(4) **Questionnaire:** to be submitted with the application form. Please refer to the ANNEX "Q/N & Country Report", and submit it along with the application form.

(5) **Country Report:** to be submitted with the application form (detailed information is provided in the ANNEX "Q/N & Country Report").

4. Procedure for Application and Selection :

(1) Submission of the Application Documents:

Closing date for application to the JICA Center in JAPAN: **August 1, 2014**

Note: Please confirm the closing date set by the respective country's JICA Office or Embassy of Japan of your country to meet the final date in Japan.

(2) Selection:

After receiving the document(s) through due administrative procedures in the respective government, the respective country's JICA office (or Japanese Embassy) shall conduct screenings, and send the documents to the JICA Center in charge in Japan (JICA TOHOKU), which organizes this project. Selection shall be made by the JICA TOHOKU in consultation with the organizations concerned in Japan (MINETEC) based on submitted documents according to qualifications. *The organization with intention to utilize the opportunity of this program will be highly valued in the selection.*

(3) Notice of Acceptance

Notification of results shall be made by the respective country's JICA office (or

Embassy of Japan) to the respective Government by **not later than August 22, 2014.**

5. Document(s) to be submitted by accepted participants:

Participants are requested to prepare a country report before coming to Japan and to make a presentation(s) after arriving in Japan to introduce current state and information regarding mining of each country. The report should be typewritten in English on A4 size paper (21 cm x 29.5 cm) by MS word and Power Point data.

6. Conditions for Attendance:

- (1) to strictly adhere to the program schedule.
- (2) not to change the program topics.
- (3) not to extend the period of stay in Japan.
- (4) not to be accompanied by family members during the program.
- (5) to return to home countries at the end of the program in accordance with the travel schedule designated by JICA.
- (6) to refrain from engaging in any political activities, or any form of employment for profit or gain.
- (7) to observe Japanese laws and ordinances. If there is any violation of said laws and ordinances, participants may be required to return part or all of the training expenditure depending on the severity of said violation.
- (8) to observe the rules and regulations of the accommodation and not to change the accommodation designated by JICA.

IV. Administrative Arrangements

1. Organizer:

(1) **Name:** JICA Tohoku

(2) **Contact:** Mr. EHARA Yoshiki (thictad@jica.go.jp)

2. Implementing Partner:

(1) **Name:** International Institute for Mining Technology, JMEC (MINETEC)

(2) **URL:** <http://minetec.sakura.ne.jp/public/en>

(3) **Remark:** MINETEC was established in 1970 as an independent, nonprofit foundation authorized by the Ministry of Economy, Trade and Industry (METI). Its main purpose is training of domestic and overseas engineers, technicians or planners for mining activities involved in the mining industry.

3. Travel to Japan:

(1) **Air Ticket:** The cost of a round-trip ticket between an international airport designated by JICA and Japan will be borne by JICA.

(2) **Travel Insurance:** Coverage is from time of arrival up to departure in Japan. Thus traveling time outside Japan will not be covered.

4. Accommodation in Japan:

JICA will arrange the following accommodations for the participants in Japan:

Kosaka Gold Palace (A hotel in MINETEC)

Address: 9-3 Furudate, Kosaka Kouzan, Kosaka-machi, Kazuno-gun, Akita-ken 017-0202 Japan

TEL: 81-186-29-3833 FAX: 81-186-29-3843

(where "81" is the country code for Japan, and "186" is the local area code)

JICA Tokyo International Center (JICA TOKYO)

Address: 2-49-5 Nishihara, Shibuya-ku, Tokyo 151-0066, Japan

TEL: 81-3-3485-7051 FAX: 81-3-3485-7904

(where "81" is the country code for Japan, and "3" is the local area code)

If there is no vacancy at JICA TOKYO, JICA will arrange alternative accommodations for the participants. Please refer to facility guide of TIC at its URL, <http://www.jica.go.jp/english/contact/pdf/tic.pdf>

5. Expenses:

The following expenses will be provided for the participants by JICA:

(1) Allowances for accommodation, living expenses, outfit, and shipping

(2) Expenses for study tours (basically in the form of train tickets.)

(3) Free medical care for participants who become ill after arriving in Japan (costs related to pre-existing illness, pregnancy, or dental treatment are not included)

(4) Expenses for program implementation, including materials

For more details, please see "III. ALLOWANCES" of the brochure for participants titled "KENSU-IN GUIDE BOOK," which will be given before departure for

Japan.

6. Pre-departure Orientation:

A pre-departure orientation will be held at the respective country's JICA office (or Japanese Embassy), to provide participants with details on travel to Japan, conditions of the workshop, and other matters.

V. Other Information

1. Visa to enter Japan will be arranged and issued at Japanese Embassy in candidates' respective countries.

If there is no Japanese Embassy or Consulate in the country, please contact JICA office or Japanese Embassy in neighbor countries.

2. Request

Participants are requested to bring information (data) of economic and social statistics, mining statistics, and mining policy which will be used not only for making a presentation of your country report, but also for making an action plan at the end of this program.

3. Others

1) Kosaka town is a long way (around 325km) from the Fukushima Nuclear Power Plant.

2) URL of Monitoring information of environmental radioactivity level:

<http://radioactivity.mext.go.jp/en/>

VI. ANNEX

ANNEX 1

Q/N & Country Report

[Q/N(Questionnaire)]

Participants are requested to submit a questionnaire with the application form which is screening the participants. This Questionnaire should be typewritten in English (A4 size paper) in accordance with the format indicated as follows.

Note: An application not accompanied with a complete questionnaire cannot be considered.

- (1) Name of participant:
- (2) Country:
- (3) E-mail:
- (4) Course you graduated in:
 - A. Mining Technology
 - B. Technology of exploration
 - C. Processing Technology
 - D. Technology of Metallurgy
 - E. Others
- (5) Describe your graduation thesis briefly(within 500 words):
- (6) State your fields of interest and the reason thereof(within 100 words)
- (7) If you have studied abroad, inform its country(ies) and periods
Country : _____
Period: From ___ to ___
- (8) Inform any available information (food restriction due to health /religious reasons), if you have.
- (9) Inform your body size for your uniform during the program
Height: _____cm Weight: _____kg
Shoe size: _____cm
(If you are not familiar with centimeter-size, please write your size with a note of "American" or "European" measures.

[Country Report]

Participants are requested to prepare a country report on the following issues and submit it along with the Application Form by **August 1, 2014**. The report should be typewritten in English on A4 size paper (21 cm x 29.5 cm) by MS word/Power Point data. It is assumed that participants should bring economic and social statistics or development plans of their country in addition to the country report, when they come to Japan. You may utilize those information for making your action plan. Due to the time limitation on the presentation (30 minutes for each), the participants are requested to highlight major problems in the presentation. In addition to the presentation, we will use your country report and its information (data) to have discussions with other participants for mutual understanding among others.

Note: It is advisable to use audio visual equipment such as movies, slides, pictures, or Power Point when presenting the country report.

1. Background information

Background information	
(1)	Name of participant and country
(2)	Overview of organization which participants belong to.

2. Topics : (please prepare your report on all of the following four topics)

Topic 1: Economic statistics

- a) The role of mining industry in the overall economy of your country

Topic 2: Mining statistics:

- a) Ore reserves and the amount of production, domestic consumption and export
- b) The activities of major mines (place, the kind of minerals, the amount of production, etc.)
- c) The capacity of mineral processing and smelting

Topic 3: Mining policy:

- a) The name and structure of mining organizations
- b) Domestic taxation system concerning foreign investment
- c) Domestic policies concerning mining industry
- d) Environmental protection

Topic 4: Technical and financial cooperation from foreign countries in the field of mining industry:

- a) The name of countries
- b) The kind of cooperation

Topic 5: Challenges and issues in the mining industry:

The items below will be discussed based on this report in Japan, the content of which is to be reflected in your action plan.

- a) Realities and future of resources development: How can projects be developed? What types of resources should be developed? What obstructive factors can be found? Where do problems lie, in social infrastructure, in environment, in funds, or elsewhere? What solutions can be found? etc.
- b) Realities and future direction of improvement of legal and tax systems for resources development: What laws exist? What problems lay in resources development, environmental concerns, tax systems, and elsewhere? What direction do improvements have? etc.
- c) Problems with, measures for and directions of small-scale mines: Have any problems arisen? What problems have arisen? What factors can be found? (e.g. use of mercury, acid effluent) etc.
- d) History, current state and counter measures against mining pollution of each country: What problems have arisen? What laws exist? What is a concrete solution?

SAMPLE SCHEDULE

Schedule for Group Training Course on Sustainable Mining Development / September - December 2013

1st-2nd week		Schedule	Transport or Traffic	Venue / Accommodations		
第1-2週		日程		Special Events		
		AM (9:00-12:00)	PM (13:00-16:00)			
23-Sep	MON. (月)	Arr. Tokyo (秋分の日): 来日(東京)		AC: Tokyo (JICA TIC: Tokyo International Center)		
24-Sep	TUE. (火)	Briefing ブリーフィング	Orientation オリエンテーション	AC: Tokyo (JICA TIC)		
25-Sep	WED. (水)	L: Japan's Current Policy on Mineral and Natural Resources 講義: 我が国の鉱物資源政策について Mr. Mitsuhiro NISHIDA, METI 経済産業省 資源エネルギー庁 資源・燃料部 鉱物資源課 課長補佐 西田光宏	L: JOGMEC's Activities and Cooperation (10:15-12:00) 講義: JOGMECの連携機能 Ms. Satomi TAKESHITA, JOGMEC (独)石油天然ガス・金属鉱物資源機構 金属企画部 企画課 主任 竹下聡美	L: Cooperation of JICA (13:30-14:30) 講義: JICAの連携機能 Mr. Yoshimasa SAKAMOTO, JICA (独)国際協力機構 産業開発・公共政策部 資源・エネルギーグループ 資源・エネルギー第二課 主任調査役 坂元芳匡	L: Guidance for Presentation of Training Results 講義: 研修成果作成の説明 (14:45-16:00) Mr. Hidekazu KATO, Mr. Yoichi MATSUDA, MINETEC (一財)国際資源開発研修センター 国際資源大学校 研修企画部長 加藤秀和、研修部門長 松田陽一	Ve.: Tokyo (TIC) SR#12(本館4階) AC: Tokyo (JICA TIC)
26-Sep	THU. (木)	L: World Mining History 講義: 世界鉱業の歴史 Dr. Eiji IZAWA, Professor Emeritus of Kyushu University 九州大学 名誉教授 井澤英二		Ve.: Tokyo (TIC) SR#12(本館4階) AC: Tokyo (JICA TIC)		
27-Sep	FRI. (金)	TIC -(JICA Bus)- Toranomon / TIC - 虎ノ門(虎ノ門ツインビルディング) Country Report Presentation カンントリーレポート発表会 Mr. Yuji NISHIKAWA, Dr. Ryoichi KOUDA, Mr. Shuichi MIYATAKE, Mr. Hidekazu KATO, Mr. Yoichi MATSUDA 欧州復興開発銀行 西川有司、(独)産業技術総合研究所 古宇田亮一、(独)石油天然ガス・鉱物資源機構 宮武 修一、(一財)国際資源開発研修センター 国際資源大学校 加藤秀和、松田陽一		Toranomon -(JICA Bus)- TIC / 虎ノ門(虎ノ門ツインビルディング) - TIC Ve: Tokyo (BMT Toranomon) BMT 委員会議室 AC: Tokyo (JICA TIC)		
28-Sep	SAT. (土)			AC: Tokyo (JICA TIC)		
29-Sep	SUN. (日)	TIC -(JICA Bus)- Tokyo -(Shinkansen "Hayate")- Morioka -(Bus)- Kosaka 移動: TIC→東京→盛岡→小坂	Living Orientation and Introduction of Global Alumni (15:00-) リビングオリエンテーション、Global Alumniの紹介 Venue: Lecture Room D (MINETEC) 於: 講義室	Photo Shoot (head shot) 個人写真撮影 AC: Kosaka (KGP: Hotel Kosaka Gold Palace)		
30-Sep	MON. (月)	Program Orientation (9:00-) Venue: Lecture Room D プログラムオリエンテーション Measurement of Uniform (10:30-) Venue: Lecture Room D ユニフォーム採寸 於: 講義室D	Opening Ceremony and Group Photo Shooting (13:00) 開訓式、集合写真撮影 Coutesy & Town Tour by Bus 14:30- Courtesy on Kosaka Town Hall 小坂町表敬訪問	Welcome Party (17:00) 歓迎会 AC: Kosaka (KGP)		
1-Oct	TUE. (火)	L: Mining Industry in Developing Countries and Case of Economic Growth 講義: 開発途上資源国の資源開発と経済発展事例 Mr. Yuji NISHIKAWA, EGP Senior Advisor, European Bank for Reconstruction and Development 欧州復興開発銀行 EGPシニアアドバイザー 西川有司		Ve.: Kosaka (MINETEC) Japanese Class by KIS at MINETEC 16:30-17:30 (KIS: Kosaka International Society) 日本語教室 於: MINETEC AC: Kosaka (KGP)		
2-Oct	WED. (水)	L: World Economics and Metal Resources Supply and Demand 講義: 国際経済と金属需給展望 Mr. Akio SHIBATA, President of Natural Resource Research Institute (株)資源・食糧問題研究所 代表 柴田明夫		Ve.: Kosaka (MINETEC) AC: Kosaka (KGP)		
3-Oct	THU. (木)	L: Geneses and exploration of hydrothermal deposits 講義: 熱水鉱床の成因と探査 Dr. Yasushi WATANABE, Prime Senior Researcher, AIST (独)産業技術総合研究所 地圏資源環境研究部門 首席研究員 渡辺寧		Ve.: Kosaka (MINETEC) AC: Kosaka (KGP)		
4-Oct	FRI. (金)	L: Geneses and exploration of hydrothermal deposits 講義: 熱水鉱床の成因と探査 Dr. Yasushi WATANABE, Prime Senior Researcher, AIST (独)産業技術総合研究所 地圏資源環境研究部門 首席研究員 渡辺寧		Ve.: Kosaka (MINETEC) Host Friends Meeting by KIS at MINETEC 19:00~ ホストフレンド対面式 AC: Kosaka (KGP)		
5-Oct	SAT. (土)			Welcome Party hosted by KIS at Tenshikan 18:30~ 歓迎会(KIS主催) 於: 大使館 AC: Kosaka (KGP)		

SAMPLE SCHEDULE

Schedule for Group Training Course on Sustainable Mining Development / September - December 2013

3rd-4th week 第3-4週		Schedule 日程	Transport or Traffic	Venue / Accommodations Special Events
6-Oct	SUN. (日)		AM (9:00-12:00) PM (13:00-16:00)	AC: Kosaka (KGP)
7-Oct	MON. (月)	L: Fundamentals of Mathematical Geology and Geologic Remote Sensing for Resource Exploration 講義: 資源探査のための数理地質学と地質リモートセンシングの基礎 Dr. Katsuaki KOIKE, Professor, Kyoto University 京都大学大学院 工学研究科 教授 小池克明		Ve.: Kosaka (MINETEC) AC: Kosaka (KGP)
8-Oct	TUE. (火)	L: Outline of Resource Economics 講義: 資源経済概論 Dr. Kenji SAWADA, Visiting Professor, The University of Tokyo 東京大学 生産技術研究所 サステナブル材料国際研究センター 客員教授 澤田賢治		Ve.: Kosaka (MINETEC) Japanese Class by KIS at MINETEC 16:30-17:30 日本語教室 於: MINETEC AC: Kosaka (KGP)
9-Oct	WED. (水)	L: FUNDAMENTALS AND PRACTICES OF GIS AND SATELLITE IMAGE 講義: GISと衛星画像データ処理の基礎と実用 Dr. Ryoichi KOUDA (独)産業技術総合研究所 地圏資源環境研究部門 招聘研究員 古宇田亮一		Ve.: Kosaka (MINETEC) AC: Kosaka (KGP)
10-Oct	THU. (木)	P: FUNDAMENTALS AND PRACTICES OF GIS AND SATELLITE IMAGE 演習: GISと衛星画像データ処理の基礎と実用 Dr. Ryoichi KOUDA (独)産業技術総合研究所 地圏資源環境研究部門 招聘研究員 古宇田亮一		Ve.: Kosaka (MINETEC) AC: Kosaka (KGP)
11-Oct	FRI. (金)	L: Mining Geophysics 講義: 物理探査法 Mr. Masaki SUGISAKI, Exploration Technology Div., Metals Exploration Dept., JOGMEC (独)石油天然ガス・金属鉱物資源機構 資源探査部 探査技術開発課 課員 杉崎真幸	L: Examples of electromagnetic and gravity surveys 講義: 電磁探査・重力探査の適用例 Mr. Makoto HARADA, Geophysicist, Exploration Technology Dept., Mineral Resources Div., Mitsui Mineral Development Engineering Co., Ltd. (MINDECO) 三井金属資源開発(株) 資源事業部 探査技術部 主任 原田 誠	Ve.: Kosaka (MINETEC) AC: Kosaka (KGP)
12-Oct	SAT. (土)			Japanese Cultural Experience hosted by KIS at Tenshikan 14:00~ 日本文化の体験 於: 大使館 AC: Kosaka (KGP)
13-Oct	SUN. (日)	Chartered Bus (All Day) / 貸切バス Lake Towada Tour 十和田湖視察		AC: Kosaka (KGP)
14-Oct	MON. (月)	Health and Sports Day 体育の日		Sports Ivent by KIS at Koyo gym 10:00~12:30 KIS ユニカールワールドカップ 於: 向陽体育館 AC: Kosaka (KGP)
15-Oct	TUE. (火)	Chartered Bus (All Day) / 貸切バス O: Kosaka Smelter and Refinery Co. Ltd. 見学: 小坂製錬(株) 9:00		Ve.: AM: Kosaka (Kosaka Smelter) Ve.: PM: Kazuno (Osarizawa Mine) AC: Kosaka (KGP) 引率: 加藤(午前) 榎松(午後)
16-Oct	WED. (水)	L: Fundamentals of Tailing and Mine Water Treatment Technology 講義: 尾鉱、抗廃水処理技術の基礎と考え方 Dr. Hiroshi NAKAZAWA, Professor, Iwate University 岩手大学大学院 工学研究科 教授 中澤 廣		Ve.: Kosaka (MINETEC) AC: Kosaka (KGP)
17-Oct	THU. (木)	L: Basic Technology of Mining Development 講義: 鉱山開発技術の基礎 Dr. Jiro YAMATOMI, Professor, The University of Tokyo 東京大学大学院 工学系研究科 教授 山富二郎		Ve.: Kosaka (MINETEC) AC: Kosaka (KGP)
18-Oct	FRI. (金)	L: Mine Development and Economic Evaluation 講義: 鉱山開発と経済評価 Dr. Jiro YAMATOMI, Professor, The University of Tokyo 東京大学大学院 工学系研究科 教授 山富二郎		Ve.: Kosaka (MINETEC) AC: Kosaka (KGP)
19-Oct	SAT. (土)			AC: Kosaka (KGP)

SAMPLE SCHEDULE

Schedule for Group Training Course on Sustainable Mining Development / September - December 2013

5th-6th week 第5-6週		Schedule 日程	Transport or Traffic	Venue / Accommodations Special Events
20-Oct	SUN. (日)			AM (9:00-12:00) PM (13:00-16:00) AC: Kosaka (KGP)
21-Oct	MON. (月)	L: Regulation and Measure about Mine Pollution Control of Japan 講義: 日本の環境規制と鉱害防止制度 Mr. Ryohei SHIOMI, METI 経済産業省 商務流通保安グループ 鉱山・火薬類監理官付 金属鉱業等鉱害対策官 塩見良平		L: Mine Pollution Control Technology in Japan ~The Role & Activities of JOGMEC for Mining Pollution Control~ 講義: 日本の鉱害防止技術 - 鉱害防止におけるJOGMECの役割 - Mr. Kazuya SUNADA, Planning Div., Metals Environment Management Dept., JOGMEC (独) 石油天然ガス・金属鉱物資源機構 金属環境事業部 企画課 砂田和也 Ve.: Kosaka (MINETEC) Japanese Class by KIS at MINETEC 16:30-17:30 日本語教室 於: MINETEC AC: Kosaka (KGP)
22-Oct	TUE. (火)	L: Environmental Impact Assessment for Mine Development 講義: 資源開発のための環境アセスメント Mr. Yoshitaka IMAEDA, Senior General manager, Environmental Div., E&E Solutions Inc. イー・アンド・イー ソリューションズ(株) 環境事業部 取締役 環境事業部長 今枝良隆		Ve.: Kosaka (MINETEC) AC: Kosaka (KGP)
23-Oct	WED. (水)	Chartered Bus (All Day) / 小坂一大館 O: Odate Office, JX Nippon Drilling Co., Ltd. 見学: JX日鉱日石ドリリング(株) 大館営業所9:00	O: Nakano Industrials Co., Ltd. 見学: 中野産業(株) 14:00	Ve.: Odate City, Hinaai Town AC: Kosaka (KGP) 引率: 松田
24-Oct	THU. (木)	Walk and back / 金属センター内 LO: Research and Development projects for metals extraction and treatment technologies utilizing microorganisms 講義見学: バイオリーチング、パッシブトリートメントの技術 (講義9:00-11:00、見学11:00-12:00) Mr. Kosuke TAKAMOTO, General Manager, Metals Technology Center, JOGMEC (独) 石油天然ガス・金属鉱物資源機構 金属資源技術研究所 所長 高本宏介	L: Smelting Technology (SXEW); Leach, Solvent Extraction, Electrowinning of Copper Ore 講義: 製錬技術 (SX-EW) Mr. Masayuki HISATSUNE, Director, General manager, Engineering Dept., Nisa Tenggara Mining Corporation スサ・テングラ・マイニング(株) 取締役 技術部長 久恒政幸	Ve.: InSite AC: Kosaka (KGP)
25-Oct	FRI. (金)	L: Smelting Technology (Cu, Pb, Zn, Ni and Precious Metals) 講義: 製錬技術(銅、鉛、亜鉛、ニッケル、貴金属等) Dr. Eturo Shibata, Professor, Tohoku University 東北大学 多元物質科学研究所 准教授 柴田 悦郎		Ve.: Kosaka (MINETEC) AC: Kosaka (KGP)
26-Oct	SAT. (土)			AC: Kosaka(KGP)
27-Oct	SUN. (日)			Halloween Party hosted by KIS at Tenshikan 15:00~16:30 ハロウィーン 於: 天使館 AC: Kosaka (KGP)
28-Oct	MON. (月)	L: Mineral Processing Technology 講義: 選鉱技術 Dr. Atsushi SHIBAYAMA, Professor, Akita University 秋田大学大学院 工学資源学研究所 教授 柴山敦		Ve.: Kosaka (MINETEC) AC: Kosaka (KGP)
29-Oct	TUE. (火)	L: Kuroko Preparation for Field Survey 講義: 黒鉱鉱床/地質巡検準備 8:30-9:00	Chartered Bus (All Day) / 移動: 小坂一大館 FS: Field Survey (Hokuroku Area) 地質巡検 9:00-14:30 Dr. Yohei ISHIKAWA, Professor Emeritus of Akita University, Dr. Haruhisa MOROZUMI, Director, Exploration Technology Div., Metals Exploration Dept., JOGMEC 秋田大学 名誉教授 石川洋平、(独) 石油天然ガス・金属鉱物資源機構 資源探査部 探査技術開発課 課長 両角春寿	Ve.: Kosaka (MINETEC), Odate City Japanese Class by KIS at MINETEC 16:30-17:30 日本語教室 於: MINETEC AC: Kosaka (KGP) 引率: 松田
30-Oct	WED. (水)	Chartered Bus (Half A Day) / 移動: 小坂一大館 O: Eco management Co., Ltd. 見学: エコマネジメント(株) 9:00-10:30	O: Ainai Waste Water Treatment Facility 相内鉱廃水処理施設 11:00-12:00 L: Case Study of Mine Development 講義: 鉱山開発事例 Mr. Susumu KUBO, General Manager, Principal Metallurgist, Resource Development Dept., Metals Group, JX Nippon Mining & Metals Corporation JX日鉱日石金属(株) 金属事業本部 資源開発部長 久保進	Ve.: AM: Kazuno City, Kosaka Town Ve.: PM: Kosaka (MINETEC) AC: Kosaka (KGP) 引率: 松田(AM)
31-Oct	THU. (木)	Walk and back / 町内 Special Event hosted by JICA / KIS 小学校交流会 (JICA / KIS主催)	L: JBIC's Finance on Natural Resources Development 講義: 資源開発にかかるJBICファイナンスの概要 (13:00-15:00) Mr. Hiroshi IWAO, Director, Division1 Mining and Metals Finance Department Energy, Natural Resources and Environment Finance Group (株) 国際協力銀行 資源・環境ファイナンス部門 鉱物資源部 第1ユニット長 岩尾大史	Ve.: AM: Kosaka Town Ve.: PM: Kosaka (MINETEC) AC: Kosaka (KGP)
1-Nov	FRI. (金)	L: Mine Development and Relations of inhabitants 講義: 鉱山開発と住民の関係 9:00-12:00 (10:30-12:00 郷土館及び小坂鉱山事務所見学含む) Mr Hidekazu KATO, Director General, Training & Planning Dept. Japan Mining Engineering & Training Center (一財) 国際資源開発研修センター 研修企画部長 加藤秀和	Chartered Bus / 町内 O: Waste Water Facility 見学: 坑廃水処理施設、テーリングダム(小坂製錬(株)) O: Kosaka Tailing Dam, Scorodite 見学: 小坂尾瀬ダム、スコロダイト(小坂製錬(株)) 13:00-16:00 (引率: 加藤)	Ve.: AM: Kosaka Town Ve.: PM: Kosaka Smelter AC: Kosaka (KGP)
2-Nov	SAT. (土)			AC: Kosaka (KGP)

SAMPLE SCHEDULE

Schedule for Group Training Course on Sustainable Mining Development / September - December 2013

7th-8th week 第7-8週		Schedule 日程	Transport or Traffic	Venue / Accommodations Special Events
		AM (9:00-12:00)	PM (13:00-16:00)	
3-Nov	SUN. (日)			AC: Kosaka (KGP)
4-Nov	MON. (月)			International Cooking & Going Away Party hosted by KIS Cooking start 15:00~, Going Away Party 18:00~ 国際料理と歓送会 於:セバーム AC: Kosaka (KGP)
5-Nov	TUE. (火)	LP: Project Evaluation Model for Mineral Resource Development / Practice for Project Evaluation 講義演習:プロジェクト評価の基礎・演習 Mr. Noboru FUJII, Mitsui Mineral Development Engineering Co., Ltd. 三井金属資源開発(株) 資源事業部 取締役 資源事業部長 藤井昇		AC: Kosaka (KGP)
6-Nov	WED. (水)	LP: Project Evaluation Model for Mineral Resource Development / Practice for Project Evaluation 講義演習:プロジェクト評価の基礎・演習 Mr. Noboru FUJII, Mitsui Mineral Development Engineering Co., Ltd. 三井金属資源開発(株) 資源事業部 取締役 資源事業部長 藤井昇		Ve.: Kosaka (MINETEC) AC: Kosaka (KGP)
7-Nov	THU. (木)	Chartered Bus / 貸切バス O: Eco Recycle Co., Ltd. Eco System Hanaoka Co., Ltd. And Eco System Akita Co., Ltd. 見学:(株)エコリサイクル エコステム秋田(株) エコステム花岡(株) 8:30	O: Zeolite dynamics 14:00-14:30 見学:ゼオライト・ダイナミック(株) ゼオライト鉱床	Ve.: Odate City, Fujisato Town, Kosaka (MINETEC) AC: Kosaka (KGP) 引率:加藤
8-Nov	FRI. (金)	Chartered Bus / 貸切バス O: Old Takarakura Mine (Waste Water Treatment) 見学:宝倉鉱山 廃水処理 9:00 (卯根倉鉱業株式会社)	O: Neutralization Plant, Matsuo Mine, Japan Oil, Gas and Metals National Corporation (JOGMEC) 見学:JOGMEC 松尾新中和処理施設(八幡平市) 13:30-16:30	Ve.: AM: Odate City Ve.: PM: Hachimantai City, Iwate Pref. AC: Kosaka (KGP) 引率: 植松
9-Nov	SAT. (土)			AC: Kosaka (KGP)
10-Nov	SUN. (日)		Kosaka -(Bus)- Hachinohe 移動:小坂-八戸市	AC: Hachinohe City (ダイワロイネットホテル八戸) 引率:加藤
11-Nov	MON. (月)	Hotel -(Bus)- Hachinohe Smelter / 移動:ホテル-八戸製錬所 O: Hachinohe Smelter, Hachinohe Smelting Co., Ltd. 見学:八戸製錬(株)八戸製錬所 9:00	O: Sumineta Mining Co., Ltd. (Open pit caving of limestone)13:30-16:30 見学:住金鉱業(株)八戸製錬所	Ve.: Kitakami City, AC: Kitakami City (ホテルメッツ北上) 引率:加藤
12-Nov	TUE. (火)	Hotel -(Bus)- Kamaishi Mine / 移動:ホテル-釜石鉱山 O: Kamaishi Kozan Co., Ltd. (Skarn type closed underground mine) 見学:釜石鉱山(株)9:00	Kamaishi -(Bus)- Akita 移動:釜石鉱山-秋田市	Ve.: Kamaishi City, Iwate Pref. AC: Akitai City (ホテルメトロポリタン秋田) 引率:加藤
13-Nov	WED. (水)	Hotel -(Bus)- Akita Zinc / 移動:ホテル-秋田製錬 O: Akita Zinc Co., Ltd. (Alloy manufacturing Factory and Semiconductor Factory) 見学:秋田製錬(株)合金工場、半導体9:00	O: Akita Zinc Solutions Co., Ltd. 見学:秋田ジンクソリューションズ(株) DOWAセミコンダクター秋田(株) 13:00-15:00	Ve.: Akita City AC: Akitai City (ホテルメトロポリタン秋田) 引率:加藤
14-Nov	THU. (木)	Akita -(Bus)- Toyota Mortor East Japan / 移動:秋田-トヨタ東日本	O: Miyagi Ohira Plant, Toyota Mortor East Japan Inc. (Manufacturer of Motor Car) 見学:トヨタ自動車東日本(株) 大衛工場(宮城県黒川郡大衡村) 13:15-15:15	Ve.: Daiko Village, Miyagi Pref. AC: Hitachi City (ホテルテラスザスクエア日立) 引率:加藤
15-Nov	FRI. (金)	Hotel -(Bus)- Nippon Mining Museum / 移動:ホテル-日鉱記念館 O: Nippon Mining Museum (Historical Museum of Copper Mine) 見学:日鉱記念館11:00~12:30	Miyagi Ohira Plant -(Bus)- Hitachi / 移動:トヨタ東日本-日立市 O: Hitachi Works, Power Systems Company, Hitachi, Ltd. / Odaira Museum / Turbine Works (Groups of Hitachi Industries) 見学:(株)日立製作所 電カシステム社 日立事業所/小平記念館/タービン工場 14:00想定	Ve.: Hitachi City Ibaraki Pref. AC: Tokyo (JICA TIC) 引率:加藤
16-Nov	SAT. (土)		Hitachi -(Bus)- Tokyo(TIC) / 移動:日立-東京(TIC)	

SAMPLE SCHEDULE

Schedule for Group Training Course on Sustainable Mining Development / September - December 2013

9th-10th week 第9-10週		Schedule	Transport or Traffic	Venue / Accommodations Special Events	
		日程			
		AM (9:00-12:00)	PM (13:00-16:00)		
17-Nov	SUN. (日)				
18-Nov	MON. (月)	L: Mining pollution prevention technology (Hg, As, Cd, Pb etc.) 講義: 鉱害対策(水銀、砒素、カドミウム、鉛 等) Dr. Toyohisa Fujita, Professor, The University of Tokyo 東京大学 大学院工学系研究科 教授 藤田豊久		Ve.: Tokyo (TIC) SR12 AC: Tokyo (JICA TIC)	
19-Nov	TUE. (火)	TIC-(Bus)-AIST, Tsukuba / 移動:TIC-つくば L: Research Activities for Mine Safety Law in Japan - Safety Monitoring Systems in Japanese Coal mines - 9:00-10:00 講義: 日本の鉱山保安法規に関連した研究活動 - 保安モニタリングシステムの研究と法規 - Ms. Atsuko TANAKA, AIST AIST 地圏資源環境研究部門 主任研究員 田中敦子	O: Geological Museum, AIST 見学: 地質標本館 10:00-11:40	L: Industrial Materials and their uses 13:00-15:00 講義: 工業原料鉱物とその利用 Dr. Tetsuichi TAKAGI, AIST AIST 地圏資源環境研究部門 鉱物資源研究グループ長 高木哲一 O: AIST facilities 15:00-16:00 見学: (独)産業技術総合研究所 実験・計測施設	Ve.: AIST Tsukuba City, Ibaraki Pref. AC: Takasaki City (ホテルメトロポリタン高崎)
20-Nov	WED. (水)	Hotel -(Bus)- Furukawa / 移動: ホテル-古河 O: Yoshii Works, Furukawa Rock Dorill Co., Ltd. 見学: 古河ロックドリル(株) 吉井工場 9:00-	Takasaki -(Bus)- Tatebayashi / 移動: 高崎市-館林市 O: Tanaka Shozo Memorial Museum 見学: 田中正造記念館 14:30-16:00	Tsukuba -(Bus)-Takasaki / 移動: つくば-高崎 引率: 加藤	
21-Nov	THU. (木)	TIC -(Bus)- Haneda AP -(Air)- Shin Chitose AP -(Air)- Memanbetsu AP -(Bus)- Itomuka 移動: 東京-羽田空港-新千歳空港-女満別空港-イトムカ	O: Itomuka mining station, Nomura Kohsan Co., Ltd. 見学: 野村興産(株)イトムカ鉱業所 13:00-	Tatebayashi -(Bus)- Tokyo(TIC) / 移動: 館林市-東京(TIC) 引率: 加藤	
22-Nov	FRI. (金)	Asahikawa -(Bus)- Jyozankei (Toyoha Mine) 移動: 旭川市-豊羽鉱山 8:00-	O: Toyoha Mine (Closed Zinc mine (underground)) 見学: 豊羽鉱山 13:00-	Itomuka -(Bus)- Asahikawa / 移動: イトムカ鉱業所-旭川市 引率: 加藤	
23-Nov	SAT. (土)	Labor Thanksgiving Day (勤労感謝の日)		Toyoha Mine -(Bus)- New-Chitose AP -(air)- Haneda AP (JICA Bus)-TIC/ 移動: 豊羽鉱山-新千歳空港-羽田空港 引率: 加藤	
24-Nov	SUN. (日)				
25-Nov	MON. (月)	Chartered Bus (Half A Day) / 貸切バス(半日) L: Application of Remote Sensing data 9:30-11:00 講義: リモートセンシングの活用 9:30- Mr. Toshiro SUGIMURA, RESTEC (一財)リモートセンシング技術センター 杉村俊朗	L: Satellite Data acquisition 11:00-12:00 講義: 衛星データについて Ms. Asako Inanaga, RESTEC (一財)リモートセンシング技術センター 稲永麻子	L: Safety Equipments 14:00-17:00 講義: 保安用品 Mr. Michio KOJIMA, Japan Safety Appliances Association (公社)日本保安用品協会 上席技術主管 小島道夫	Ve.: AM: Toranomom Ve.: PM: JICA(TIC) SR13 AC: Tokyo (JICA TIC) 引率: 加藤
26-Nov	TUE. (火)	L: Mining drainage treatment 講義: 鉱山廃水処理 9:00-10:30 Mr. Seiji NAKATSUKA, Manager, Technical Div., DOWA Technology Co., Ltd DOWAテクノロジー(株) 技術開発部 課長 中塚清次	TIC -(Bus)- Haneda AP -(Air)- Kagoshima AP -(Bus)- Kirishima 移動: TIC-羽田空港-鹿児島空港-霧島市	Ve.: AM: JICA (TIC) SR13 AC: Kirishima City (ロイヤルイン園分) 引率: 加藤	
27-Nov	WED. (水)	Hotel -(Bus)- Nittetsu / 移動: ホテル-日鉄 O: Nittetsu Kagoshima Geothermal Co., Ltd. 見学: 日鉄鹿児島地熱(株) 9:00-12:00 Geothermal electric power plant	Nittetsu -(Bus)- Hishikari / 移動: 霧島市-菱刈 O: Hishikari Mine, Sumitomo Metal Mining Co., Ltd. 見学: 住友金属鉱山(株) 菱刈鉱山 9:00- Active underground Gold mine (vein type)	Hishikari -(Bus)- Kagoshima / 移動: 菱刈-鹿児島 引率: 加藤	
28-Nov	THU. (木)	Hotel -(Bus)- Mitsui Kushikino / 移動: ホテル-三井串木野 O: Mitsui Kushikino Kozan Co., Ltd. Akeshi Mine 見学: 三井串木野鉱山(株) 赤石鉱山 9:00-12:00 Active open pit Gold mine	Kogoshima Chuo Sta. -(Shinkansen)- Okayama 移動: 鹿児島駅-岡山駅-津山	Ve.: Chiran, Minamikyushu City, Kagoshima Pref. AC: Okayama City (ホテル・アルファワン津山) 引率: 加藤	
29-Nov	FRI. (金)	Hotel -(Bus)- Misaki / 移動: ホテル-三咲町 O: Yanahara Mine Site (closed mine water treatment) 見学: 旧榎原鉱山抗廃水処理施設 8:30 岡山県久米郡美咲町 (卯根倉鉱業株式会社 西部事業所)	Misaki -(Bus)- Uno -(Ferry)- Naoshima / 移動: 美咲町-直島 O: Naoshima Smelter, Mitsubishi Materials Corp. (Copper Smelter and Recycling) 見学: 三菱マテリアル株式会社 直島製錬所 13:00	Naoshima -(Ferry)- Uno -(Bus)- Okayama / 移動: 直島-岡山 引率: 加藤	
30-Nov	SAT. (土)	O: Hiroshima Peace Memorial Museum & Others 見学: 広島平和記念資料館等	Move Hiroshima Sta. to Tokyo Sta. 移動: 広島駅-東京駅 Hiroshima -(Shinkansen)- Tokyo -(Bus)- TIC	引率: 加藤 AC: Tokyo (JICA TIC)	

SAMPLE SCHEDULE

Schedule for Group Training Course on Sustainable Mining Development / September - December 2013

11th week 第11週		Schedule 日程	Transport or Traffic	Venue / Accommodations Special Events	
1-Dec	SUN. (日)		AM (9:00-12:00)	PM (-16:00)	
2-Dec	MON. (月)	Hotel -(Bus)- Komatsu / 移動: ホテルーコマツ O: Komatsu Techno Center, Komatsu Ltd. 見学: コマツテクノセンタ 10:00-12:00		TIC -(Bus)- Numatsu 移動: TIC-沼津市	AC: Atami City, Shizuoka Pref. Ve.: AM: Izu City, Shizuoka Pref. AC: Tokyo (JICA TIC) 引率: 加藤
3-Dec	TUE. (火)	L: Artisanal small-scale mining issues and the countermeasures 講義: 小規模鉱山と対策の考え方 Mr. Satoshi MURAO, Principal Investigator, AIST (独)産業技術総合研究所 主任研究員 村尾智		Chartered Bus (rund trip) / 貸切バス(往復) O: Japan Space Systems (Utilization of Satellite Remote Sensing data) 13:30-16:30 見学: (一財)宇宙システム開発利用推進機構	Ve.: AM: Tokyo (TIC) Ve.: PM: JSS (In front of Tokyo Tower) AC: Tokyo (JICA TIC) 引率: 加藤
4-Dec	WED. (水)	L: Concepts of Mining Policy 講義: 鉱業政策の考え方 Mr. Yuji NISHIKAWA, EGP Senior Advisor, European Bank for Reconstruction and Development 欧州復興開発銀行 EGPシニアアドバイザー 西川有司			Ve.: Tokyo (TIC) AC: Tokyo (JICA TIC)
5-Dec	THU. (木)	D: Presentation of Training Results 検討: 研修成果発表会 Mr. Yuji NISHIKAWA, Dr. Kenji SAWADA, Dr. Ryoichi KOUDA, Dr. Toshihiko HAYASHI, Mr. Hidekazu KATO, Mr. Masatoshi TOMODA 欧州復興開発銀行 西川有司、東京大学 澤田賢治、(独)産業技術総合研究所 古宇田亮一、(独)石油天然ガス・金属鉱物資源機構 宮武修一、(一財)国際資源開発研修センター 国際資源大学校 友田正敏、加藤秀和			Ve.: 日本鉱業協会 6階会議室 AC: Tokyo (JICA TIC)
6-Dec	FRI. (金)			Evaluation Meeting 1 研修評価会(13:00-14:30) / Evaluation Meeting 2 反省会(14:30-16:00) Closing Ceremony 閉講式(16:00-17:15) Going-Away Party 歡送会(17:30-19:30) Mr. Yuji NISHIKAWA, Dr. Ryoichi KOUDA, Mr. Masatoshi TOMODA, Mr. Hidekazu KATO 欧州復興開発銀行 西川有司、(独)産業技術総合研究所 古宇田亮一、(一財)国際資源開発研修センター 国際資源大学校 友田正敏、加藤秀和	Ve.: Tokyo (虎ノ門ツインビルディング内BMT虎ノ門) AC: Tokyo (JICA TIC)
7-Dec	SAT. (土)	Going HOME 帰国			

Guidelines for “Action Plan”

1. What’s the Action Plan (AP)?

Action Plan is to improve problems of organizations, divisions to which you belong through knowledge obtained from this training course.

You are expected to carry out the “action plan” after going back to your country so that “Action Plan” should be concrete and feasible

2. Why you are requested to prepare the Action Plan?

All of you are participating in this training representing your country or organization. Therefore, you are expected to share the ideas and knowledge acquired through this training within and outside your organization and take initiative in acting for improving extension service. Your Action Plan (AP) is a course of action for you to take after resuming your duty. Accordingly, it needs to be concrete and feasible. When elaborating an AP you are expected to make the best out of the knowledge and ideas acquired during the training.

3. Contents of the AP

Based on the information and experiences, which you have obtained through the training course, you will write a proposal to your Department of your Ministry/Organization and Cooperatives in order to improve the current situation of your country. When you write an AP, please refer to your respective “Job/Country Report”. The contents of your action should include the below-mentioned items as minimum requirement. You are free to add more information that you think necessary.

[Contents to be included]

1) Introduction:

Please describe the reasons for choosing the subject, and also to describe which specific information from the training you think is useful for the activities in your AP.

2) Purpose:

Please describe the purpose of your AP.

3) Target Group:

Please describe a group of people or organizations to whom your AP is targeted in order to improve the identified problems.

4) Expected Output:

Please describe specifically the output, which is expected to be seen after your AP is fulfilled.

5) Essential Activities:

Please describe activities that are necessary in order to achieve the expected output mentioned in paragraph 4.

6) Division of Responsibilities:

Please describe the name of organization or department expected to be in charge of the

activities mentioned in 5. If many people or organizations are involved, please don't forget to indicate their relationship.

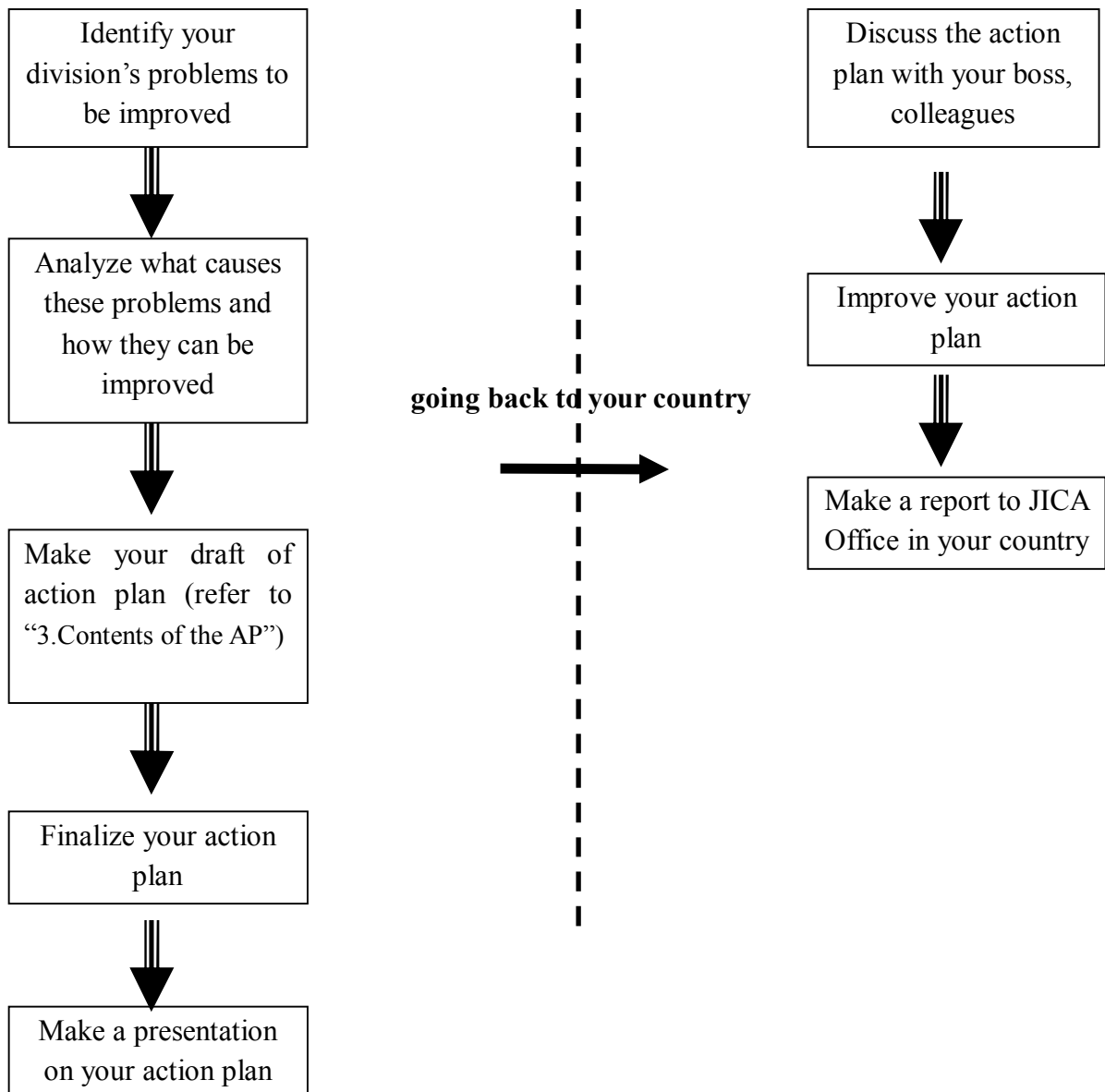
7) Financial Resources (Cost Estimate):

The Action Plan should include a realistic consideration of financial resources based on your organization's budget. The budget of your Action Plan should be calculated based on costs of all inputs.

8) Schedule (How long):

The duration of the Action Plan depends on each participant. However, your plan should be realistic and something that you can achieve in 6 months to 2 years.

4. How do you make it? (Writing process)



5. Notes for AP writing

The most important point in your AP is “feasibility”. Even an excellent plan will become meaningless if it is never implemented. Followings are some tips to improve “feasibility”.

1) Involvement of your Boss

Design your plan which can be implemented responsibly with your given authority. It means that the plan should fit in the scope where you have a direct influence or coordination. AP is not a grand scale plan for launching a new project or formulating new policies or revising existing policies of your government. AP is a plan of one organization or a person in order to solve some of the present issues, which are under the direct responsibility of such organization or person.

2) Balance between Volume and Resources of your Target Group

Specify the target group by considering the budget required for implementation, your position, duties, etc. If target groups become more limited, the financial and human resource requirement will be less and coordination efforts will also become smaller accordingly.

3) Monitoring and Improvement

Specify the expected results. Otherwise it is difficult to properly assess the progress and to identify missing factors to achieve the goal.

4) Control Area

Specify the essential activities. Though the more activities performed by the participants instead of someone else brings the higher possibilities of the activities which are actually carried out, it may bring the higher responsibilities at the same time. Therefore, scope of activities should be limited for easiness of control.

5) Period

Make a timetable with sufficient latitude.

6) Describe how the knowledge and ideas obtained in Japan are applied to the plan. Due to different conditions such as financial and human resources as well as cultural background in your country and in Japan, Japan’s system or method may not be immediately applicable in your country. Please give due consideration to the factors derived from such conditions.

6. Final presentation

For Your Reference

JICA and Capacity Development

The key concept underpinning JICA operations since its establishment in 1974 has been the conviction that “capacity development” is central to the socioeconomic development of any country, regardless of the specific operational scheme one may be undertaking, i.e. expert assignments, development projects, development study projects, training programs, JOCV programs, etc.

Within this wide range of programs, Training Programs have long occupied an important place in JICA operations. Conducted in Japan, they provide partner countries with opportunities to acquire practical knowledge accumulated in Japanese society. Participants dispatched by partner countries might find useful knowledge and re-create their own knowledge for enhancement of their own capacity or that of the organization and society to which they belong.

About 460 pre-organized programs cover a wide range of professional fields, ranging from education, health, infrastructure, energy, trade and finance, to agriculture, rural development, gender mainstreaming, and environmental protection. A variety of programs are being customized to address the specific needs of different target organizations, such as policy-making organizations, service provision organizations, as well as research and academic institutions. Some programs are organized to target a certain group of countries with similar developmental challenges.

Japanese Development Experience

Japan was the first non-Western country to successfully modernize its society and industrialize its economy. At the core of this process, which started more than 140 years ago, was the “*adopt and adapt*” concept by which a wide range of appropriate skills and knowledge have been imported from developed countries; these skills and knowledge have been adapted and/or improved using local skills, knowledge and initiatives. They finally became internalized in Japanese society to suit its local needs and conditions.

From engineering technology to production management methods, most of the know-how that has enabled Japan to become what it is today has emanated from this “*adoption and adaptation*” process, which, of course, has been accompanied by countless failures and errors behind the success stories. We presume that such experiences, both successful and unsuccessful, will be useful to our partners who are trying to address the challenges currently faced by developing countries.

However, it is rather challenging to share with our partners this whole body of Japan’s developmental experience. This difficulty has to do, in part, with the challenge of explaining a body of “tacit knowledge,” a type of knowledge that cannot fully be expressed in words or numbers. Adding to this difficulty are the social and cultural systems of Japan that vastly differ from those of other Western industrialized countries, and hence still remain unfamiliar to many partner countries. Simply stated, coming to Japan might be one way of overcoming such a cultural gap.

JICA, therefore, would like to invite as many leaders of partner countries as possible to come and visit us, to mingle with the Japanese people, and witness the advantages as well as the disadvantages of Japanese systems, so that integration of their findings might help them reach their developmental objectives.



CORRESPONDENCE

For enquiries and further information, please contact the JICA office or the Embassy of Japan. Further, address correspondence to:

JICA Tohoku Branch (JICA TOHOKU)

**Address: 15th Floor, Sendai Dai-ichi Seimei Tower Bldg.4-6-1 Ichiban-cho,
Aoba-ku, Sendai-shi, Miyagi-ken, 980-0811 Japan**

TEL: +81-22-223-5775 FAX: +81-22-227-3090

E-mail: thictad@jica.go.jp