



Note: Applicants are requested to submit the Medical History Questionnaire included in the Application Form mentioned in 4-(1) below.

7) Must not be serving any form of military service

(2) Recommendable Qualifications

Expectations for the Participants:

Age: be between the ages of twenty-five (25) and forty (40) years

3. Required Documents for Application

(1) Application Form: The Application Form is available at the respective country's JICA office.

* Pregnancy

Pregnant participants are strictly requested to attach the following documents in order to minimize the risk for their health.

- ① letter of the participant's consent to bear economic and physical risks
- ② letter of consent from the participant's supervisor
- ③ doctor's letter with agreement of his/her training participation.

Please ask National Staffs in JICA office for the details.

(2) Nominee's English Score Sheet: to be submitted with the application form. If you have any official documentation of English ability (e.g., TOEFL, TOEIC, IELTS), please attach it (or a copy) to the application form.

(3) Country Report: to be submitted to the respective country's JICA Office with the application form. Fill in ANNEX of this General Information, and submit it along with the Nomination Form **by March 15, 2013.**

4. Procedure for Application and Selection:

(1) Submitting the Application Documents:

Closing date for application to the JICA Center in JAPAN: **March 15, 2013**

Note: Please confirm the closing date set by the respective country's JICA office of your country to meet the final date in Japan.

(2) Selection:

After receiving the document(s) through due administrative procedures in the respective government, the respective country's JICA office shall conduct screenings, and send the documents to the JICA Hokkaido which organizes this project. Selection shall be made by the JICA Hokkaido in consultation with the organizations concerned in Japan based on submitted documents according to qualifications. **Nominees who belong to the organization which is a target of Countries for grant aid of "The Forest Preservation Programme" by Japanese Government will be highly valued in the selection.**

9

(3) Notice of Acceptance

Notification of results shall be made by the respective country's JICA office to the respective Government by **not later than April 5, 2013.**

5. Conditions for Attendance:

- (1) to follow the schedule of the program,
- (2) not to change the program subjects or extend the period of stay in Japan,
- (3) not to bring any members of their family,
- (4) to return to their home countries at the end of the program in accordance with the travel schedule designated by JICA,
- (5) to refrain from engaging in political activities, or any form of employment for profit or gain,
- (6) to observe Japanese laws and ordinances. If there is any violation of said laws and ordinances participants may be required to return part or all of the training expenditure depending on the severity of said violation.
- (7) to observe the rules and regulations of their place of accommodation and not to change the accommodation designated by JICA.
- (8) to participate in the whole program including a preparatory phase prior to arrival in Japan. Applying organizations, after receiving notice of acceptance for their nominees, are expected to carry out the actions described in section II-9 and section III-4.

IV. Administrative Arrangements

1. Organizer:

(1) **Name:** JICA Hokkaido (Hokkaido)

(2) **Contact:** jicahkic@jica.go.jp and sictp1-sub@jica.go.jp

2. Implementing Partner:

Name: Rakuno Gakuen University

URL: <http://www.rakuno.ac.jp/english/>

3. Travel to Japan:

(1) **Air Ticket:** The cost of a round-trip ticket between an international airport designated by JICA and Japan will be borne by JICA.

(2) **Travel Insurance:** Term of Insurance: From arrival to departure in Japan. The traveling time outside Japan shall not be covered.

4. Accommodation in Japan:

JICA will arrange the following accommodations for the participants in Japan:

JICA Hokkaido (Hokkaido) International Center (HKIC)

Address: Minami 4-25, Hondori 16-chome, Shiroishi-ku, Hokkaido,
Hokkaido, 003-8668, Japan

TEL: 81-11-866-8393 FAX: 81-11-866-8382

(where "81" is the country code for Japan, and "11" is the local area code)

JICA Tokyo International Center (JICA TOKYO)

Address: 2-49-5 Nishihara, Shibuya-ku, Tokyo 151-0066, Japan

TEL: 81-3-3485-7051 FAX: 81-3-3485-7904

(where "81" is the country code for Japan, and "3" is the local area code)

If there is no vacancy at JICA Center, JICA will arrange alternative accommodations for the participants. Please refer to facility guide of HKIC/TIC at its URL, <http://www.jica.go.jp/english/about/organization/domestic/index.html>

Expenses:

The following expenses will be provided for the participants by JICA:

(1) Allowances for accommodation, living expenses, outfit, and shipping

(2) Expenses for study tours (basically in the form of train tickets)

(3) Free medical care for participants who become ill after arriving in Japan (costs related to pre-existing illness, pregnancy, or dental treatment are not included)

(4) Expenses for program implementation, including materials

For more details, please see p. 9-16 of the brochure for participants titled

"KENSHU-IN GUIDE BOOK," which will be given to the selected participants

11

before (or at the time of) the pre-departure orientation.

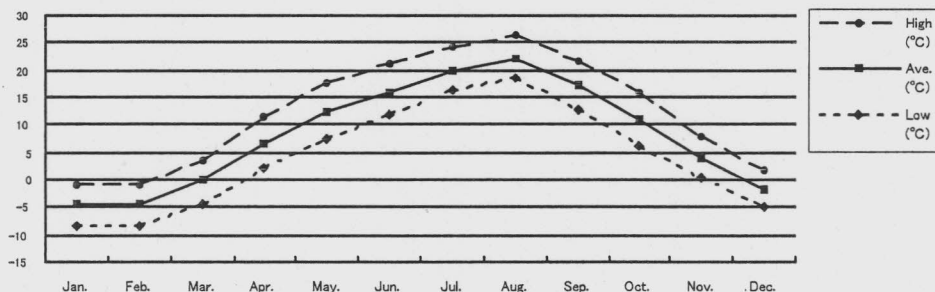
5. Pre-departure Orientation:

A pre-departure orientation will be held at the respective country's JICA office (or Japanese Embassy), to provide participants with details on travel to Japan, conditions of the program, and other matters.

V. Other Information

1. Pre-departure orientation is held at JICA office to provide the selected candidates with details on travel to Japan, conditions of training, and other matters. Participants will see a video, "TRAINING IN JAPAN", and will receive a textbook and a cassette tape, "SIMPLE CONVERSATION IN JAPANESE". A brochure, "GUIDE TO TRAINING IN JAPAN" will be handed to each selected candidate before or at the orientation.
2. Participants who have successfully completed the course will be awarded a certificate by JICA.
3. Toward the end of the course, each participant is to draft an Action Plan and present it. The Action Plan, which includes outcomes of this training, is a short to mid-term concrete plan of possible measures to tackle a high priority problem(s) related to introduction or application of remote sensing of forest resources or sound forestry management in the participant's capacity as a responsible officer. The participant is expected to fully utilize the ideas and techniques he/she has obtained through the training program in order to formulate "Action Plan" which will hopefully lead to the solution or mitigation of the above-mentioned problem.

4. Climate in Hokkaido



	Jan.	Feb.	Mar.	Apr.	May.	Jun.	Jul.	Aug.	Sep.	Oct.	Nov.	Dec.
High (°C)	-1	-0.8	3.4	11.4	17.8	21	24.2	26.3	21.7	15.9	7.8	1.7
Ave. (°C)	-4.4	-4.4	-0.2	6.5	12.2	16	19.8	22.1	17.1	11	4.1	-1.6
Low (°C)	-8.4	-8.5	-4.2	2.1	7.3	11.9	16.4	18.7	12.8	6.3	0.4	-5
Snow(cm)	58	83	64	2							5	28

Typical Seasonal Wear: (May- June) Long-sleeves, Short-sleeves, Light Jacket

5. Recreation:

1) Participants can use an indoor swimming pool and gymnasium located next to JICA Hokkaido. The charges are paid by JICA. JICA Tokyo also has gymnasium for the participants.

2) JICA encourages international friendship exchange between participants and local communities. Therefore, it would be helpful for participants to bring their national costumes and materials such as slides, videos, and music cassettes, which introduce the culture in their countries.

6. Equipment in JICA Center

JICA Center has following equipment for participants.

<utensils in the private room>

Bed, Prefabricated Bath, Desk, Refrigerator, Hot pot, Bookshelf, Air Conditioning,

13

In-room Safe, TV sets (CNN、NHK (BS) , DVD/VHS Video Player)

*ATTENTION: There are no slippers and towels. Soap, shampoo & conditioner, toothpaste & toothbrush, razor, detergent, sewing kit and CD-R can be purchased at the front desk.

<Audio-visual equipment for training>

Video recorder, Multimedia Projector (available to use Microsoft Power Point)

13

VI. ANNEX:

J13- 00851

Remote Sensing of Forest Resources(A) (BASIC)
(JFY 2013)

Country Report

Each Participants are requested to prepare the Country Report on the following issues and submit it to JICA Hokkaido along with the application form **by March 15, 2013**. The report should be typewritten in English on A4 size paper (21 cm x 29.5 cm) in single spacing at maximum of 10 pages. This Report shall be used for selection of participants.

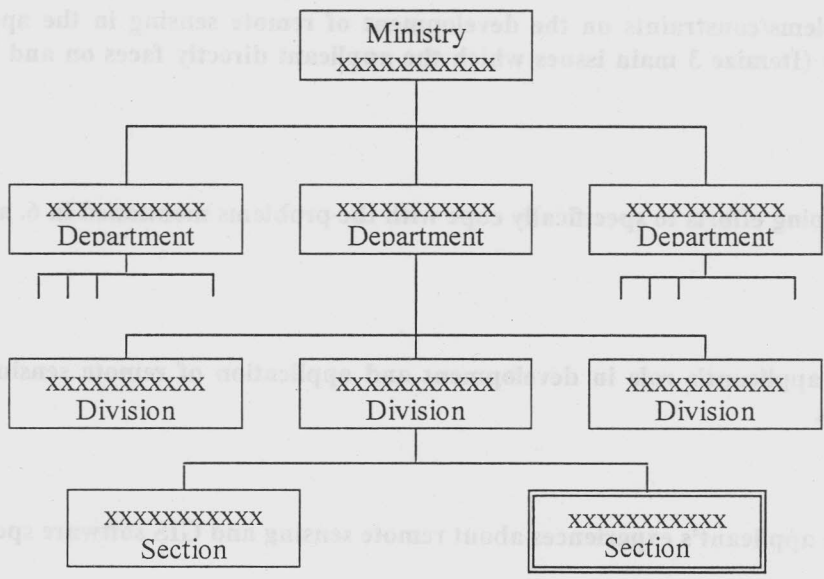
NOTE: Participants are requested to give a 20 minutes presentation and discuss about the situation of forestry management in respective country at beginning of the program by country. So, participants from the same country must prepare a single presentation by country, not by personal.

1. Basic information

Name	
Organization	
Position	
Country	

2. Outline of the participant's Organization

(example)



15

3. Description of your job experiences

Period	From	to
Organization		
Position		
Outline of duties:		

4. Describe present condition and/or historical trend of forests and forest management with specific figures in the applicant's country, in accordance with the following indicators respectively;

(choose more than 2 indicators from among the following for the description)

- ① area and percent of forest by forest ecosystem types,
- ② area and percent of forest specifically for conservation,
- ③ area, percent and growing stock of plantations by species,
- ④ value and volume of production of wood, wood products and non-wood products,
- ⑤ status of legal and institutional framework on forest planning, policy development and coordination with relevant sectors, and
- ⑥ status of forest inventory, assessment and monitoring.

If there is no national data on the indicators, you can use provincial data or data at the project level as well.

5. Current development of remote sensing of Forest Resources in the applicant's country

6. Problems/constraints on the development of remote sensing in the applicant's country (Itemize 3 main issues which the applicant directly faces on and describe them.)

7. On-going efforts to specifically cope with the problems mentioned in 6. above. (If any)

8. The applicant's role in development and application of remote sensing in the country.

9. The applicant's experiences about remote sensing and GIS software specifically

16

	ENVI	Arc GIS	ERDAS IMAGINE	GPS	Others
Version					
Experience (How many times do you use this software in your current duties?)					
Purpose (What for do you use these software?)					
Satellite data (Describe specific data which you have analyzed)					

10. Knowledge or skills which the applicant intends to acquire from this training program. (example: knowledge of technical issues about REDD, skills of using remote sensing software for change detection of landuse in your site)

11. Plans/projects which you are likely to be involved in your country after completing the training, if any

12. In the applicant's country, what kind of effort/action for REDD can be made? (example: law, policy, finance and aid)

13. Describe the target area which you want to deal with in your action plan in concrete terms.

17

For Your Reference

JICA and Capacity Development

The key concept underpinning JICA operations since its establishment in 1974 has been the conviction that “capacity development” is central to the socioeconomic development of any country, regardless of the specific operational scheme one may be undertaking, i.e. expert assignments, development projects, development study projects, training programs, JOCV programs, etc.

Within this wide range of programs, Training Programs have long occupied an important place in JICA operations. Conducted in Japan, they provide partner countries with opportunities to acquire practical knowledge accumulated in Japanese society. Participants dispatched by partner countries might find useful knowledge and re-create their own knowledge for enhancement of their own capacity or that of the organization and society to which they belong.

About 460 pre-organized programs cover a wide range of professional fields, ranging from education, health, infrastructure, energy, trade and finance, to agriculture, rural development, gender mainstreaming, and environmental protection. A variety of programs are being customized to address the specific needs of different target organizations, such as policy-making organizations, service provision organizations, as well as research and academic institutions. Some programs are organized to target a certain group of countries with similar developmental challenges.

Japanese Development Experience

Japan was the first non-Western country to successfully modernize its society and industrialize its economy. At the core of this process, which started more than 140 years ago, was the “*adopt and adapt*” concept by which a wide range of appropriate skills and knowledge have been imported from developed countries; these skills and knowledge have been adapted and/or improved using local skills, knowledge and initiatives. They finally became internalized in Japanese society to suit its local needs and conditions.

From engineering technology to production management methods, most of the know-how that has enabled Japan to become what it is today has emanated from this “*adoption and adaptation*” process, which, of course, has been accompanied by countless failures and errors behind the success stories. We presume that such experiences, both successful and unsuccessful, will be useful to our partners who are trying to address the challenges currently faced by developing countries.

However, it is rather challenging to share with our partners this whole body of Japan’s developmental experience. This difficulty has to do, in part, with the challenge of explaining a body of “tacit knowledge,” a type of knowledge that cannot fully be expressed in words or numbers. Adding to this difficulty are the social and cultural systems of Japan that vastly differ from those of other Western industrialized countries, and hence still remain unfamiliar to many partner countries. Simply stated, coming to Japan might be one way of overcoming such a cultural gap.

JICA, therefore, would like to invite as many leaders of partner countries as possible to come and visit us, to mingle with the Japanese people, and witness the advantages as well as the disadvantages of Japanese systems, so that integration of their findings might help them reach their developmental objectives.

Co



CORRESPONDENCE

For enquiries and further information, please contact the JICA office or the Embassy of Japan. Further, address correspondence to:

JICA Hokkaido(Sapporo) International Center (JICA Hokkaido(Sapporo): HKIC)

Address: Minami 4-25, Hondori 16-chome, Shiroishi-ku, Sapporo,
Hokkaido, 003-8668, Japan

TEL: +81-11-866-8393 FAX: +81-11-866-8382