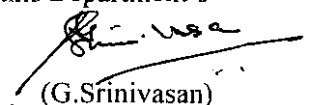


**TRAINING CIRCULAR**

Subject : A Group Training Course in Maternal and Child Health, to be held in Japan from 11/05/2010 to 26/06/2010 (Core Phase).

The undersigned is directed to state that the Japan International Cooperation Agency (JICA), under the Technical Cooperation Programme of the Government of Japan has invited applications for a Group Training Course in Maternal and Child Health. The duration of the programme is from April 2010 to December 2010, the core phase from 11/05/2010 to 26/06/2010 will be held in Japan, the remaining period will be held in the candidate's home country. The details of the programme and the application form may be drawn from Ministry of Personnel, Public Grievances and Pensions website ([persmin.nic.in](http://persmin.nic.in)).

2. The course is designed for department of maternal and child health in university or hospital with an overall goal of enhancing skills and knowledge of nurses and midwives engaged in child health to meet the basic health needs of local people in participant's countries.
3. The candidate should be a head nurse or equivalent in charge of nurse and midwife training in hospital, or be a professor/lecturer or equivalent in charge of nurse or midwife training in university or equivalent; have more than five years experience in the field of Maternal and child health; be a certified nurse or midwife; be proficient at written and spoken English; be in good health, both physically and mentally to undergo the training and not be serving in the military; and be between the ages of twenty five and forty five years.
4. The JICA covers the cost of a round-trip ticket between an international airport designated by JICA and Japan; travel insurance from arrival to departure in Japan; and includes allowances for accommodation, living expenses, outfit and shipping; expenses for study tours; free medical care for participants who may fall ill after reaching Japan (costs related to pre-existing illness, pregnancy, or dental treatment are not included). The participants are not allowed to take any family member during the training course.
5. It is requested that the nomination of the suitable candidates may please be forwarded to this Department in accordance with the eligibility criteria and the terms and conditions of the JICA Circular dated 20<sup>th</sup> January 2010. The Ministries may sponsor the names of only Government/ Public Sector Undertaking functionary.
6. The nomination details should be submitted in the JICA's prescribed proformas (A2A3 Forms), duly authenticated by the Department concerned alongwith the country report.
7. The applications should reach this Department through proper channel **not later than 11<sup>th</sup> March 2010**. Nominations received after the prescribed date will not be considered. The circular inviting applications for the above training programme is available on this Department's website [persmin.nic.in](http://persmin.nic.in)

  
(G.Srinivasan)

Under Secretary to the Govt. of India

1. The Secretary, Ministry of Health and Family Welfare, Nirman Bhavan, New Delhi.
2. The Secretary, Ministry of Women & Child Development, Shastri Bhavan, New Delhi.
3. The Secretary, Ministry of Railways, Rail Bhavan, New Delhi.
4. All State Governments/Union Territories.
5. Director (Technical), NIC with the request to post the circular along with the JICA's circular and the enclosed application Proformas on the Department's website



# TRAINING AND DIALOGUE PROGRAMS

**GENERAL INFORMATION ON**

**MATERNAL AND CHILD HEALTH**

**集團研修「母子保健」**

***JFY 2010***

**<Type: Solution Creation / 類型: 課題解決促進型>**

**NO.: J-10-00635 / ID: 1080757**

**From April 2010 to December 2010**

**Phases in Japan: From May 11, 2010 to June 26, 2010**

This information pertains to one of the Training and Dialogue Programs of the Japan International Cooperation Agency (JICA), which shall be implemented as part of the Official Development Assistance of the Government of Japan based on bilateral agreement between both Governments.

# ***I. Concept***

## **Background**

In September 2000, the Millennium Development Goals (MDGs) were established by the United Nations. Among eight goals, two of them were related to maternal and child health, such as reduction of child mortality, improvement of maternal health. Maternal and child health indices (ex. child mortality rate, maternal mortality ratio) in developing countries show poor health conditions, mainly caused by poverty, malnutrition, infectious diseases, and lack of educational opportunities.

In order to improve maternal and child health conditions, it is important to train nurses and midwives so that they can have adequate skills to meet the needs of local circumstances.

Northern Hokkaido including Asahikawa is a vast and sparsely populated area, which used to be the area of poor health conditions with insufficient number of health institutions. By training nurses and midwives and utilization of information, the area has succeeded to improve the conditions of maternal and child health.

This program aims to enhance human resource development of nurses and midwives in developing countries by introducing nursing administration system and human resource development in northern Hokkaido.

## **For what?**

This program aims that participants can propose an appropriate plan to develop human resources such as nurses / midwives engaged in maternal and child health care in local communities.

## **For whom?**

This program is offered to department of **maternal and child health** in university or hospital.

## **How?**

Participants shall have opportunities in Japan to learn about human resource development of nurses and midwives and health / medical systems for the safe delivery through lectures, observations, exercises and discussions. Participants shall also formulate an action plan describing what he / she is expected to do after going back to respective home countries, making the best use of the knowledge and ideas acquired and discussed in Japan among others into their activities.

## II. Description

### 1. Title (J-No.): Maternal and Child Health (J-10-00635)

### 2. Period of program

<b>Duration of whole program:</b>	April 2010 to December 2010
<b>Preliminary Phase:</b> (in a participant's home country)	April 2010 to May 2010
<b>Core Phase in Japan:</b>	May 11 to June 26, 2010
<b>Finalization Phase:</b> (in a participant's home country)	June 2010 to December 2010

### 3. Target Regions or Countries

Afghanistan, Bangladesh, Cambodia, Haiti, India, Marshall Islands, Palestine, Papua New Guinea, Syria, Sudan, Uruguay and Zambia

### 4. Eligible / Target Organization

This program is designed for department of **maternal and child health** in university or hospital.

### 5. Total Number of Participants

Twelve (12) participants are selected from Afghanistan, Bangladesh, Cambodia, Haiti, India, Marshall Islands, Palestine, Papua New Guinea, Syria, Sudan, Uruguay and Zambia. The number of participants from each country will be 1.

### 6. Language to be used in this program: English

### 7. Program Objective:

At the end of the program, the participants are expected to achieve the following;

This program aims that participants will propose an appropriate action plan to resolve the challenges in maternal and child health care in local area as nurses and midwives being commanding positions.

I To achieve this program objective, participants are expected in Japan;

- (1) To learn policy and history of maternal and child health in Japan, and consider how to enhance maternal and child health system in participant's area/country through referring to Japanese case.
- (2) To understand the process of human resource development of nurses and midwives in Japan.
- (3) To understand the roles and functions of institutions which relate to maternal and child health in Japan (birth centers, health care centers, hospitals and universities)
- (4) To consider how to improve the provision of local health care in the home country by learning health care and referral systems in remote and isolated areas in Hokkaido
- (5) To design concrete and feasible action plans through analyzing maternal and child health problems in participant's area/country.

II In participant's home country, it is also expected that the action plan is discussed and implemented, and the progress of its implementation shall be submitted as "Progress Report" to JICA.

### 8. Overall Goal

Skills and knowledge of nurses and midwives engaged in material and child health shall be improved to meet the basic health needs of local people in participant's countries.

### 9. Expected Module Output and Contents:

This program consists of the following components. Details on each component are given below:

<b>(1) Preliminary Phase in a participant's home country</b> (April 2010 to May 2010) <i>Participating organizations make required preparation for the Program in the respective country.</i>	
Modules	Activities
Inception report	Formulation and submission of Inception Report

**NOTE:**

(1) Consultation with Ex-Participants is strongly recommendable in order to prevent mismatch between participants' needs and training course.

<b>(2) Core Phase in Japan</b> (May 11, 2010 to June 26, 2010) <i>Participants dispatched by the organizations attend the Program implemented in Japan.</i>		
Modules	Subjects/Agendas	Methodology
To learn policy and history of material and child health in Japan.	<ul style="list-style-type: none"> <li>· Health administration system in Japan</li> <li>· Social welfare system in Japan</li> <li>· History and current situation of delivery support system in Japan</li> <li>· History and current situation of pediatric nursing in Japan</li> </ul>	Lecture Observation and Exercise
To understand the process of human resource development of nurses and midwives	<ul style="list-style-type: none"> <li>· Nursing education system in Japan</li> <li>· Principle of department of nursing in AMC</li> <li>· The role of midwives in Japan</li> <li>· Activity of practicing midwives</li> <li>· Exercise in hospital</li> </ul>	Lecture Observation and Exercise
To understand the roles and functions of institutions which relate to maternal and child health in Japan	<ul style="list-style-type: none"> <li>· Pre-service and in-service trainings in Japan</li> <li>· Observation of Asahikawa Medical College</li> <li>· Visiting local hospitals and health care centers</li> <li>· Provision of Maternal and child health care and activities of public health nurses in the municipal level</li> </ul>	Lecture Observation and Exercise

Consider how to improve the provision of local health care in the home country	<ul style="list-style-type: none"> <li>· Local medical care and referral system</li> <li>· History of public health nurses in Hokkaido</li> <li>· Activities of public health nurses and midwives in municipality</li> <li>· Medical care system in remote and isolated areas in Hokkaido</li> <li>· Personal Coaching by course leader</li> </ul>	Lecture Observation and Exercise
To design concrete and feasible action plans for nurses and midwives	<ul style="list-style-type: none"> <li>· Mid-term evaluation</li> <li>· Formulation of action plan</li> </ul>	Discussion

### **(3) Finalization Phase in a participant's home country**

*Participating organizations produce final outputs by making use of results brought back by participants. This phase marks the end of the Program.*

Modules	Activities
Implementation of the action plan Submission of a progress report	Application and implementation of the action plan back in respective home country and submission of a final report describing the progress of implementing respective action plan by December 31 2010.

#### **NOTE:**

(2) Participants are requested to make Country Report Presentation at the beginning of the training course, in order to share the respective countries information in the field of maternal and child health care. Participants are advised to prepare for Country Report presentation before arriving Japan. It must be written in English, and fifteen (15) minutes will be allocated to each participant for the presentation (including interpretation and discussion). Presentation by using Microsoft Power Point is recommended. After the Notice of Acceptance, JICA will distribute the format of country report presentation material. Participants are expected to complete it and bring its electrical data.

(3) JICA Sapporo might suspend the acceptance of candidates for the coming years from those organizations which does not seriously share participants action plan, nor without reporting to JICA within the mentioned period.

#### **<Structure of the program>**

##### **(1) Preliminary phase (activities in home country)**

Preparation of the inception report.

##### **(2) Core Phase (activities in Japan)**

Program Schedule (subject to minor changes)

Date	Program
11-May Tue	Arrival in Sapporo
12-May Wed	Briefing Program Orientation
13-May Thu	General Orientation
14-May Fri	General Orientation
15-May Sat	Free
16-May Sun	Free Move to Asahikawa

17-May	Mon		Opening Ceremony
			Program Orientation / Tour in AMC Nursing Dept.
			Welcome Party
18-May	Tue	Presentation	Country Report Presentation
19-May	Wed		Courtesy Call to Mayor of Asahikawa City
		Lecture	Maternal and Child Health Care in Japan (audio-visual)
20-May	Thu	Group work	Personal Coaching (1) : Identification and Clarification of Problems
21-May	Fri	Group work	Personal Coaching (1) : Identification and Clarification of Problems
22-May	Sat		Free
23-May	Sun		Free
24-May	Mon	Lecture	Japan's History & Current Situation (1) : Maternal Health in Japan ~ From the health statistics ~
		Lecture	Japan's History & Current Situation (2) : Pediatric nursing in Japan
25-May	Tue	Lecture	Japan's History & Current Situation (3) : Childbirth nursing and the roles of mid-wife
		Lecture	Japan's History & Current Situation (4) : Welfare System / Primary Health Care / Health Care
26-May	Wed	Lecture	Children's Health Care (1) : Topics of Pediatric nursing
		Observation	Children's Health Care (2) : Function and roles of Hokkaido Habilitation Center (Facility for heavily-disabled people)
27-May	Thu	Lecture	Community Health Care Activities (1) : Maternal and Child Care System
		Lecture	Community Health Care Activities (2) : Nursing Skills for Maternal and Child Care in Local Communities
28-May	Fri	Lecture	Maternal and Child Care Activities (1) : Prenatal care during Perinatal Period / Home Care
		Discussion	Mid-Term Evaluation
29-May	Sat		Free
30-May	Sun		Free
31-May	Mon	Lecture	Maternal and Child Care Activities (1) : Prenatal care during Perinatal Period / Home Care
		Lecture	Activities of Mid-wife in private practice
1-Jun	Tue	Lecture	Nursing Education in Japan (1) : Educational System, Educational Concept of Department of Nursing in AMC Nursing Education in Japan (2) : Education in Department of Nursing in AMC (Basic) Nursing Education in Japan (3) : Education in Department of Nursing in AMC (Pediatric) Nursing Education in Japan (4) : Education in Department of Nursing in AMC (Maternal and Obstetric) Nursing Education in Japan (5) : Nursing education at the other educational organization

2-Jun	Wed	Observation	Community Health Care Activities (3) : Vaccination at Asahikawa Public Health Center
		Observation	Medical Care in Japan (1) : Asahikawa Red Cross Hospital
3-Jun	Thu	Lecture	Infection Prevention (1) Topic for parasitic insect Infection Prevention (2) Summary of Infection Prevention Infection Prevention (3) Hospital Infection Prevention Infection Prevention (4) Hospital Infection Prevention
4-Jun	Fri	Observation	Medical Care in Japan (2) : Perinatal Center
		Lecture	Childbirth in Japan
5-Jun	Sat		Free
6-Jun	Sun		Free
7-Jun	Mon	Observation	Nursing Education in Japan (4) : Pre-service Training (Maternal, Pediatric, etc.)
8-Jun	Tue	Observation	Nursing Education in Japan (4) : Pre-service Training (Maternal, Pediatric, etc.)
9-Jun	Wed	Lecture, Observation	Medical Care in Japan (3) : Nurse training and Post Graduate Training in AMC
10-Jun	Thu	Lecture, Observation	Medical Care in Japan (4) : Nurse training and Post Graduate Training in AMC
11-Jun	Fri	Group work	Personal Coaching (2) : Consulting and Setting the objectives
12-Jun	Sat		Free
13-Jun	Sun		Free
14-Jun	Mon	Observation	Maternal and child health care in local area in Hokkaido(1)
15-Jun	Tue	Observation	Maternal and child health care in local area in Hokkaido(2)
16-Jun	Wed	Observation	Maternal and child health care in local area in Hokkaido(3)
17-Jun	Thu	Observation	Maternal and child health care in local area in Hokkaido(4)
18-Jun	Fri		Conclusion / Making Action Plan
19-Jun	Sat		Free
20-Jun	Sun		Free
21-Jun	Mon		Personal Coaching (3) : Planning the concrete and feasible Action Plan
22-Jun	Tue	Lecture	Cooperation between AMC and Local Community
23-Jun	Wed		Supplementation, Assignments in Home Country
24-Jun	Thu	Presentation	Action Plan Presentation Evaluation Meeting
25-Jun	Fri		Closing Ceremony
			Farewell Party
26-Jun	Sat		Leave Japan

### (3) Final Phase (activities in home country)

Participants are requested to implement the action plan and submit a progress report describing the progress of implementing respective action plan. The progress report needs to be authorized by the respective participant's belonging organization, and to be submitted to both the respective county's JICA office (if applicable) and JICA Sapporo by December 31, 2010.



## **10. Follow-up Cooperation by JICA**

In this program, JICA might extend follow-up support to participating organizations that intend to develop the result of the project further. Please note that the support shall be extended selectively based on proposals from the participating organizations.

### ***III. Conditions and Procedures for Application***

#### **1. Expectations for the Participating Organizations:**

- (1) This program is designed primarily for organizations that intend to address specific issues or problems identified in their operation. Participating organizations are expected to use the project for those specific purposes.
- (2) This program is enriched with contents and facilitation schemes specially developed in collaboration with relevant prominent organizations in Japan. These special features enable the project to meet specific requirements of applying organizations and effectively facilitate them toward solutions for the issues and problems.
- (3) As this program is designed to facilitate organizations to come up with concrete solutions for their issues, participating organizations are expected to make due preparation before dispatching their participants to Japan by carrying out the activities of the Preliminary Phase described in section -9 .
- (4) Participating organizations are also expected to make the best use of the results achieved by their participants in Japan by carrying out the activities of the Finalization Phase described in section -9.

#### **2. Nominee Qualifications:**

Applying Organizations are expected to select nominees who meet the following qualifications.

##### **(1) Essential Qualifications**

- 1) Current Duties: a head nurse or equivalent in charge of nurse and midwife training in hospital, or be a professor / lecturer or equivalent in charge of nurse or midwife training in university or equivalent,
- 2) Experience in the relevant field: have more than five (5) years' experience in the field of Maternal and child health as a nurse or midwife.
- 3) Educational Background: be a certified nurse or midwife
- 4) Language: ideally have a competent command of spoken and written English which is equivalent to TOEFL CBT 200 or more (This program includes active participation in discussions, action plan development, thus requires good competence of English ability. Please attach an official certificate for English ability such as TOEFL, TOEIC etc, if possible)
- 5) Health: be in good health, both physically and mentally, to undergo the training program. Pregnant applicants are not acceptable.
- 6) Must not be serving any form of military service.

##### **(2) Recommendable Qualifications**

- 1) Age: be between the ages of twenty-five (25) and forty-five (45) years

### 3. Required Documents for Application

- (1) **Application Form:** The Application Form is attached to this General Information.
- (2) **Nominee's English Score Sheet:** to be submitted with the application form. If you have any official documentation of English ability (e.g., TOEFL, TOEIC, IELTS), please attach it (or a copy) to the application form.
- (3) **Inception Report:** to be submitted along with the application form.

### 4. Procedure for Application and Selection :

#### (1) Submitting the Application Documents:

Closing date for application to the JICA Center in JAPAN: **March 15, 2010**

**Note: Please confirm the closing date set by the respective country's JICA office or Embassy of Japan of your country to meet the final date in Japan.**

#### (2) Selection:

After receiving the document(s) through due administrative procedures in the respective government, the respective country's JICA office (or Japanese Embassy) shall conduct screenings, and send the documents to the JICA Center in charge in Japan, which organizes this project. Selection shall be made by the JICA Center in consultation with the organizations concerned in Japan based on submitted documents according to qualifications. *The organization with intention to utilize the opportunity of this program will be highly valued in the selection.*

#### (3) Notice of Acceptance

Notification of results shall be made by the respective country's JICA office (or Embassy of Japan) to the respective Government by **not later than April 14, 2010.**

Together with the notice of Acceptance, JICA will distribute the format of country report presentation material. Participants are expected to prepare the material along with the format and bring the electrical data to Japan.

### 5. Conditions for Attendance:

- (1) to observe the schedule of the program,
- (2) not to change the program subjects or extend the period of stay in Japan,
- (3) not to bring any members of their family,
- (4) to return to their home countries at the end of the program in Japan according to the travel schedule designated by JICA,
- (5) to refrain from engaging in political activities, or any form of employment for profit or gain,
- (6) to observe the rules and regulations of their place of accommodation and not to

change the accommodation designated by JICA, and  
**(7)** to participate the whole program including a preparatory phase prior to the program in Japan. Applying organizations, after receiving notice of acceptance for their nominees, are expected to carry out the actions described in section -9 and section -4.

## IV. Administrative Arrangements

### 1. Organizer:

- (1) **Name:** JICA Sapporo
- (2) **Contact:** [jicasic@jica.go.jp](mailto:jicasic@jica.go.jp)  
[sictp1-tr@jica.go.jp](mailto:sictp1-tr@jica.go.jp)

### 2. Implementing Partner:

- (1) **Name:** Asahikawa Medical College
- (2) **URL:** <http://www.asahikawa-med.ac.jp/new04/en/index.html>
- (3) **Remark:** Asahikawa Medical College has implemented JICA program “Human Resource Development in the Field of Maternal and Child Health” from 2003 to 2007. 47 people from 28 countries have participated. “Maternal and Child health” course started from 2008. 24 people from 13 countries have participated.

### 3. Travel to Japan:

- (1) **Air Ticket:** The cost of a round-trip ticket between an international airport designated by JICA and Japan will be borne by JICA.
- (2) **Travel Insurance:** Term of Insurance: From arrival to departure in Japan. The traveling time outside Japan shall not be covered.

### 4. Accommodation in Japan:

JICA will arrange the following accommodations for the participants in Japan:

Asahikawa medical college is located in Asahikawa city far from Sapporo. Participants are expected to stay at a private hotel in Asahikawa during most of the training program.

JICA Sapporo International Center (JICA Sapporo)  
Address: Minami 4-25, Hondori 16-chome, Shiroishi-ku,  
Sapporo, Hokkaido, 003-8668, Japan  
TEL: 81-11-866-8393 FAX: 81-11-866-8382  
(where “81” is the country code for Japan, and “11” is the local area code)

If there is no vacancy at JICA Sapporo, JICA will arrange alternative accommodations for the participants.

JICA Sapporo has the following equipment for the participants.

<Private Room> 2 Glasses, Teapot

**ATTENTION:** There are no slippers or towels. Soap, shampoo & conditioner, toothpaste & toothbrush, razor, detergent, sewing kit and floppy disks can be purchased at the front desk.

## **5. Expenses:**

The following expenses will be provided for the participants by JICA:

- (1) Allowances for accommodation, living expenses, outfit, and shipping
- (2) Expenses for study tours (basically in the form of train tickets)
- (3) Free medical care for participants who become ill after arriving in Japan (costs related to pre-existing illness, pregnancy, or dental treatment are not included)
- (4) Expenses for program implementation, including materials

For more details, please see p. 9-16 of the brochure for participants titled "KENSU-IN GUIDE BOOK," which will be given to the selected participants before (or at the time of) the pre-departure orientation.

## **6. Pre-departure Orientation:**

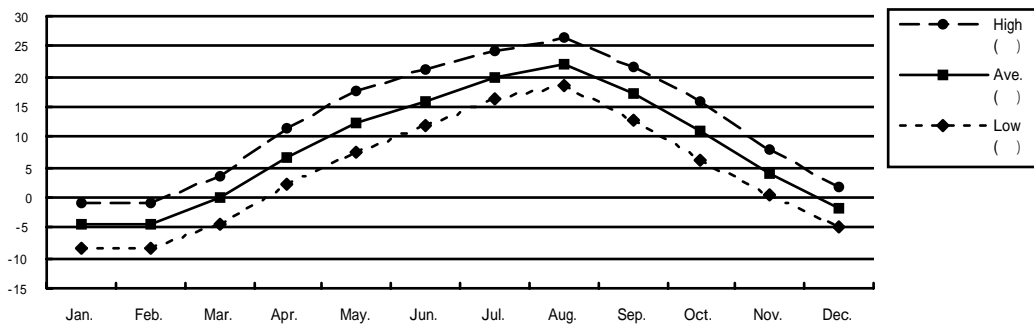
A pre-departure orientation will be held at the respective country's JICA office (or Japanese Embassy), to provide participants with details on travel to Japan, conditions of the workshop, and other matters.

## V. Other Information

### 1. Certificate

Participants who have successfully completed the program will be awarded a certificate by JICA.

### 2. Climate in Sapporo



	Jan.	Feb.	Mar.	Apr.	May.	Jun.	Jul.	Aug.	Sep.	Oct.	Nov.	Dec.
High ( )	-1	-0.8	3.4	11.4	17.8	21	24.2	26.3	21.7	15.9	7.8	1.7
Ave. ( )	-4.4	-4.4	-0.2	6.5	12.2	16	19.8	22.1	17.1	11	4.1	-1.6
Low ( )	-8.4	-8.5	-4.2	2.1	7.3	11.9	16.4	18.7	12.8	6.3	0.4	-5
Snow(cm)	58	83	64	2							5	28

Typical Seasonal Wear: (May- June) Long-sleeves, Short-sleeves, Light Jacket

### 3. Recreation

- (1) Participants can use an indoor swimming pool, gymnasium, and tennis courts located next to JICA Sapporo. The charges are paid by JICA.
- (2) JICA encourages international friendship exchanges between participants and local communities. Therefore, it would be helpful for participants to bring national costumes and materials such as slides, videos, and music cassettes which explain cultures in their countries.

### 4. Equipment in JICA Sapporo

JICA Sapporo has the following Audio-Visual equipment for training.

Video recorder, Overhead projector, Slide Projector, Multimedia Projector (available to use Microsoft Power Point).

## **5. School Visit**

JICA encourages participants to interact with the local community, and in this context, JICA will arrange a visit to a local school during their stay in Japan. If the participant wishes to bring items to show to Japanese pupils, here are some suggestions:

Textbooks (primary school), traditional toys and games, national costumes, musical instruments, typical crafts using local materials, traditional cooking/eating utensils, pictures showing daily life, small national flag, local newspaper. (Bringing these items is not a requirement.)



# VI. ANNEX

J-10-00635

## Maternal and Child Health (JFY 2010)

### Inception Report

Participants are requested to prepare an inception report on the following issues and submit it to JICA Sapporo along with the application form by March 15, 2010

The report should be typewritten in English on A4 size paper (21 cm x 29.5 cm) in single spacing at maximum of 10 pages.

This Report shall be used for selection of participants.

NOTE: Participants are requested to discuss on their inception report in group discussion sessions during the program.

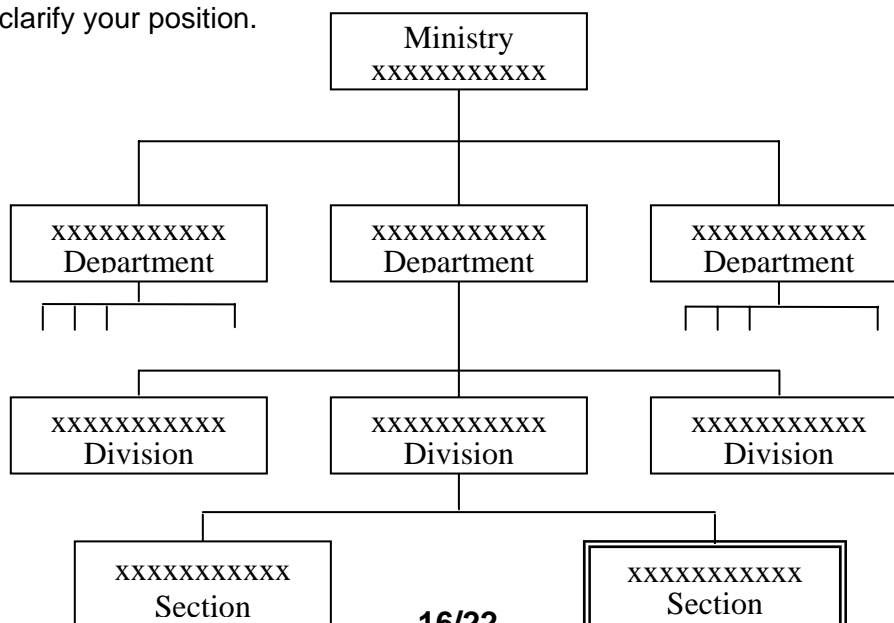
#### 1. Basic information

Name	
Organization	
Position	
Country	

#### 2. Outline of the participant's Organization

(example)

-Please clarify your position.



**3. Describe your job experiences.**

Period	From _____ to _____	
Organization	_____	
Position	_____	
Duties on Maternal and Child Health: - - - - - - Discribe in bullet points.	Duties <i>other than</i> Maternal and Child Health - - - - - Discribe in bullet point.	
Period	From _____ to _____	
Organization	_____	
Position	_____	
Duties on Maternal and Child Health: - - - - - - Discribe in bullet points.	Duties <i>other than</i> Maternal and Child Health - - - - - Discribe in bullet point.	
Period	From _____ to _____	
Organization	_____	
Position	_____	
Duties on Maternal and Child Health: - - - - - - Discribe in bullet points.	Duties <i>other than</i> Maternal and Child Health - - - - - Discribe in bullet point.	

**4. Describe problems in the field of maternal and child health in your area/country and give the reasons.**

**(1) Organizational aspects**

No	Problems	Reasons
1		
2		
3		

**(2) Technical aspects**

No	Problems	Reasons
1		
2		
3		

**5. Describe the efforts that you/your organization have been trying to solve problems of maternal and child health in your country/area, if you have.**

**6. Describe your expectation of this training program.**

**7. Describe your future plans to apply expected results of the training program after returning to your country.**

## ***For Your Reference***

### **JICA and Capacity Development**

The key concept underpinning JICA operations since its establishment in 1974 has been the conviction that “capacity development” is central to the socioeconomic development of any country, regardless of the specific operational scheme one may be undertaking, i.e. expert assignments, development projects, development study projects, training programs, JOCV programs, etc.

Within this wide range of programs, Training Programs have long occupied an important place in JICA operations. Conducted in Japan, they provide partner countries with opportunities to acquire practical knowledge accumulated in Japanese society. Participants dispatched by partner countries might find useful knowledge and re-create their own knowledge for enhancement of their own capacity or that of the organization and society to which they belong.

About 460 pre-organized programs cover a wide range of professional fields, ranging from education, health, infrastructure, energy, trade and finance, to agriculture, rural development, gender mainstreaming, and environmental protection. A variety of programs and are being customized to address the specific needs of different target organizations, such as policy-making organizations, service provision organizations, as well as research and academic institutions. Some programs are organized to target a certain group of countries with similar developmental challenges.

### **Japanese Development Experience**

Japan was the first non-Western country to successfully modernize its society and industrialize its economy. At the core of this process, which started more than 140 years ago, was the “*adopt and adapt*” concept by which a wide range of appropriate skills and knowledge have been imported from developed countries; these skills and knowledge have been adapted and/or improved using local skills, knowledge and initiatives. They finally became internalized in Japanese society to suit its local needs and conditions.

From engineering technology to production management methods, most of the know-how that has enabled Japan to become what it is today has emanated from this “*adoption and adaptation*” process, which, of course, has been accompanied by countless failures and errors behind the success stories. We presume that such experiences, both successful and unsuccessful, will be useful to our partners who are trying to address the challenges currently faced by developing countries.

However, it is rather challenging to share with our partners this whole body of Japan’s developmental experience. This difficulty has to do, in part, with the challenge of explaining a body of “tacit knowledge,” a type of knowledge that cannot fully be expressed in words or numbers. Adding to this difficulty are the social and cultural systems of Japan that vastly differ from those of other Western industrialized countries, and hence still remain unfamiliar to many partner countries. Simply stated, coming to Japan might be one way of overcoming such a cultural gap.

JICA, therefore, would like to invite as many leaders of partner countries as possible to come and visit us, to mingle with the Japanese people, and witness the advantages as well as the disadvantages of Japanese systems, so that integration of their findings might help them reach their developmental objectives.



***CORRESPONDENCE***

For enquiries and further information, please contact the JICA office or the Embassy of Japan. Further, address correspondence to:

**JICA Sapporo International Center (JICA Sapporo)**

**Address:** Minami 4-25, Hondori 16-chome, Shiroishi-ku , Sapporo,  
Hokkaido, 003-8668, Japan

TEL: +81-11-866-8393 FAX: +81-11-866-8382