

F.No34/55/2008-EO(F)
Government of India
Ministry of Personnel, P.G. & Pensions
(Department of Personnel & Training)

North Block, New Delhi
Dated the 17th June, 2008

**Subject : Masters Degree Porgamme in "Public Policy and Taxation" at
Yokohama University, Japan, sponsored by the World Bank.**

The undersigned is directed to state that the World Bank has invited applications for the Masters Degree Porgamme in "Public Policy and Taxation" at Yokohama University, Japan. The programme is sponsored by the Joint Japan/World Bank Graduate Scholarship Programme from April, 2009 to March, 2011. The details of the course and the application forms may be drawn from the Ministry of Personnel, Public Grievances and Pensions website (www.persmin.nic.in)

2. The applicant should hold a bachelor's degree or its equivalent for its development-related field and have at least 4 years recent full-time professional experience in a field related to economic development or public policy; in the applicant's home country or in another developing country. He should be between the age of 24 and 45; be nationals of a world bank borrowing country; be mid-career professionals in public service; be of good character, a team player and active in extracurricular activities. The candidates should be competent in spoken and written English. The candidates who currently pursuing a Master's or Ph.D. programme in industrialized countries; who have had one or more years of training/studies and/or residency in an industrialized country; permanent residents/ nationals of industrialized countries; Executive Directors, their alternates and staff of the World Bank Group as well as their close relatives, are not eligible for the degree programme.

4. The objective of the programme is to develop a basic understanding of public policy and taxation; to teach the concept and methods of an entire taxation process through an internship programme and to offer specialized courses of study on various aspects of public policy and taxation. The programme covers a monthly allowance of JPY 1,70,000 and a round-trip air ticket to Japan plus a travel allowance of JPY 60,000. The monthly stipend is intended to cover living, commuting and other incidental expenses during the study period. In addition, the scholarship covers tuition, entrance examination and admission fees. Travel expenses for some programme-sponsored field trips are also included

5. The nomination details should be submitted in the University's prescribed application form-2008 along with other requisite performae, duly authenticated by the organization of the candidate and routing through the Ministry/Deptt. Concerned. It should be certified by the competent authority that the organization is a Government Institution.

6. The applications of the eligible candidates should reach this Department latest by 22nd September, 2008. The applications received after the prescribed date, will not be considered.


(Trishaljit Sethi)
Director

1. All the Ministries/Departments of the Government of India
2. All the State Governments/UTs
3. Sr. Tech. Director, NIC(DOPT), North Block, with the request to post the circular alongwith the circulars of the World Bank of the website of this Department.

Saurabh Garg
Adviser
Email: sgarg2@worldbank.org

Tel.: 202-458:5693
Cell : 202-725-0106
Fax: 202-522-1553

May 12, 2008

Subject: Application Form for Master's Degree Program in "Public Policy and Taxation" at the Yokohama National University in Japan.

Dear Mr. Prashant,

Please find enclosed herewith the application packages for the Master's Degree program in "Public Policy and Taxation" at the Yokohama National University in Japan. This program is sponsored by the Joint Japan/World Bank Graduate Scholarship Program (JJ/WBGSP) and is taught in English. The deadline for the receipt of completed applications at the University is September 30, 2008.

Interested applicants should submit their completed applications directly to the University of Yokohama.

The applications may please be circulated among the various ministries and State Governments as appropriate.

With regards,

Yours sincerely

[Signature]
(Saurabh Garg) 2/15/08

US (Ks) 2/15/08
For m... the so... 2/15/08
Go
15/5

~~Mr. Prashant,~~
Director,
Ministry of Finance,
Department of Economic Affairs,
North Block,
New Delhi-110001,
INDIA.



AIR M

UNTED



YOKOHAMA NATIONAL UNIVERSITY
INTERNATIONAL GRADUATE SCHOOL OF SOCIAL SCIENCES
79-4 Tokiwadai, Hodogaya-ku, Yokohama 240-8501 JAPAN

To whom it may concern,

Thank you for your interest in the Joint Japan/World Bank Graduate Scholarship Program for Master's Program in Public Policy and Taxation at Yokohama National University. You will find enclosed in this packet information regarding the program and materials for applying for this scholarship as follows:

- 2009 Program Description for the Master's Program in Public Policy and Taxation
- 2009 Application Form (includes 3 pg. form and Statement of Purpose)
- Two recommendation forms
- Return address labels
- Application Checklist (for your personal use)
- Envelope for submitting application
- Two envelopes for letters of recommendation

Please direct any inquiries you may have by fax or email to the MPE Office:

MPE Office
International Graduate School of Social Sciences
Yokohama National University
79-4 Tokiwadai, Hodogaya-ku
Yohohama 240-8501 Japan
Fax: +81-45-339-3608
Email: is-mpe@ynu.ac.jp

Inquiries by telephone will not be accepted.

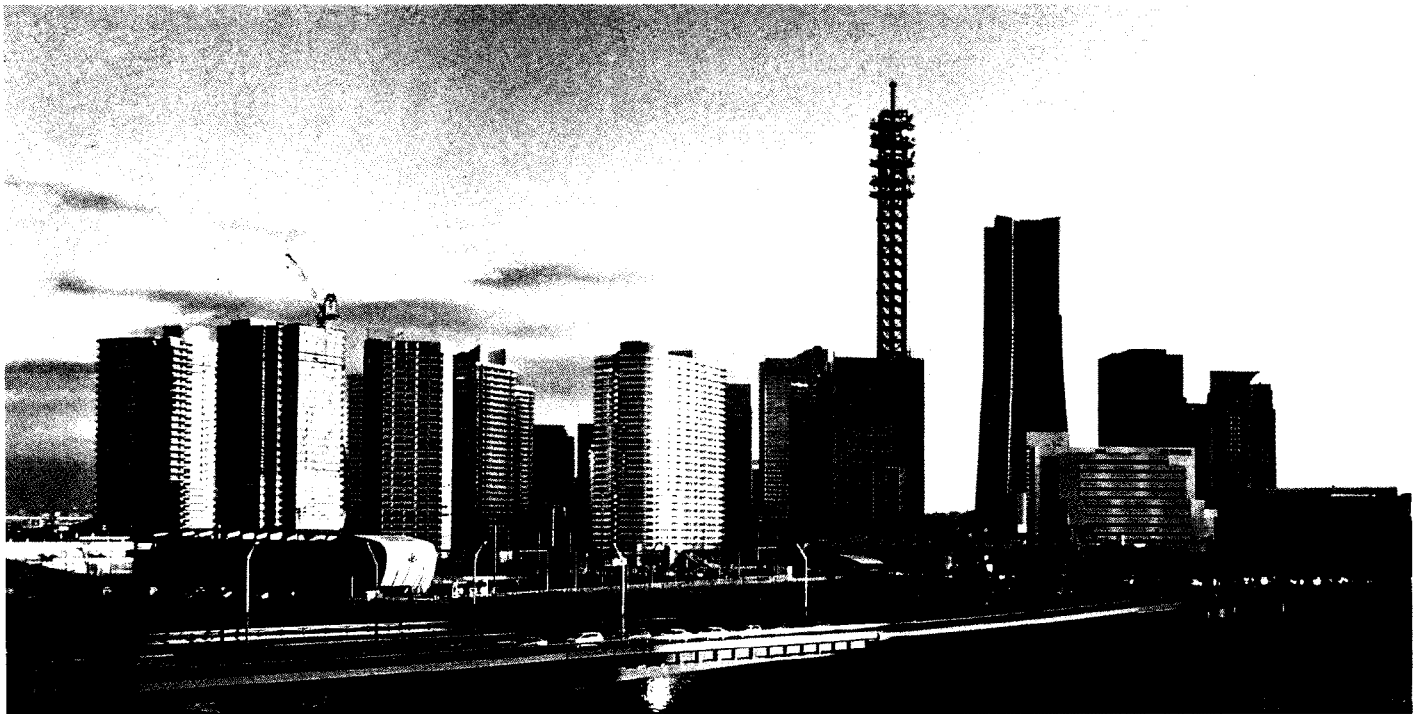
Sincerely yours,

A handwritten signature in black ink, consisting of stylized Japanese characters that read "有江 大介" (Arie Daisuke).

Daisuke ARIE
Director, Master's Program in Public Policy and Taxation
International Graduate School of Social Sciences
Yokohama National University

Joint Japan / World Bank
Graduate Scholarship Program for

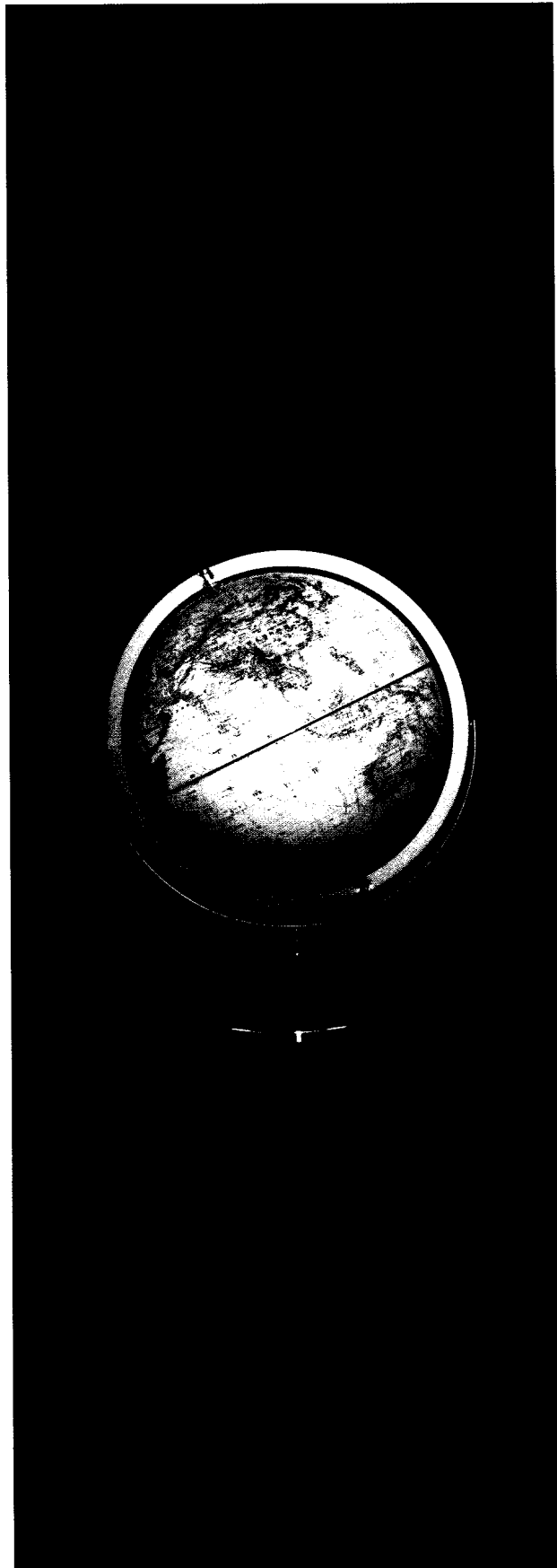
PUBLIC POLICY AND TAXATION



Program Description

2009

YOKOHAMA NATIONAL UNIVERSITY



Contents

Message from the Chairperson of the Department of Economics	2
Objectives of the Program	4
Scholarship Details	5
Academic Program	6
Degree Requirements	
Course Offerings	
A. Course Descriptions	
B. Internship (Practicum at the National Tax Agency)	
C. Thesis Instruction	
Field Trips	
Academic Calendar.....	13
Applying to the Program	14
Eligibility	
Application Requirements	
How to Apply	
Application Deadline	
Housing	17
Medical Care	17
Yokohama National University	18
City of Yokohama	19

Message from the Chairperson of the Department of Economics, International Graduate School of Social Sciences

Improving public finance and taxation systems is extremely important for economic development. Training individuals with a solid knowledge and practical ability in economics and tax policy is one of the most important aspects of any economic development strategy.

Deeply aware of the importance that such an international contribution of training of individuals had for Japan, the first nation in Asia to have achieved economic development, the Master's Program in Public Policy and Taxation (PPT program), with cooperation from the World Bank and Japan's National Tax Agency, was inaugurated in 1996.

This program trains individuals needed in the fields of public finance and tax administration in developing nations, combining systematic lectures on economics and tax policy as well as the National Tax Agency's National Tax College internship for acquiring practical knowledge gained in the field of Japan's tax administration.

The program we offer has the longest history among similar programs in Japan. Along with the successful training of many individuals active in developing nations around the world, YNU has earned a high reputation from both inside and outside Japan.

Students who pass a rigorous selection process are admitted to the program from developing nations all over the world, Asia, Africa, South America, etc. The admitted students will study in a rich educational environment of Yokohama National University's tree-filled campus.

The graduate school offers various master's programs conducted in English in addition to this program. There is a master's program conducted in English for Indonesian Governmental Scholarship Students (IGS program) by the request of the Indonesian and Japanese governments, which is funded by the Japan Bank for International Cooperation (JBIC). In addition, the IDB program, in cooperation with the Inter-American Development Bank, is offered.

Also, the graduate school started a double-degree program in which the students study in Indonesia for one year and in this graduate school for another year and receive degrees from both the Indonesian university and this graduate school, under an educational linkage agreement with two universities, University of Indonesia and Gaja Mada University.

Therefore, the PPT program students can acquaint themselves with students in various programs other than the already diverse group of students in the PPT program, thus expanding their international network in various ways.

Fifty-five graduates of this program are active in their home countries, utilizing the network they have expanded at this graduate school in addition to knowledge and skills they gained through education in the program.

We are highly proud of the accomplishments of this program so far.

We welcome the applications from any bright, motivated individuals wishing to study at this graduate school whose ideals match our own vision of contribution to improvement of tax policy in developing nations and to the international society in general.

秋山 太郎

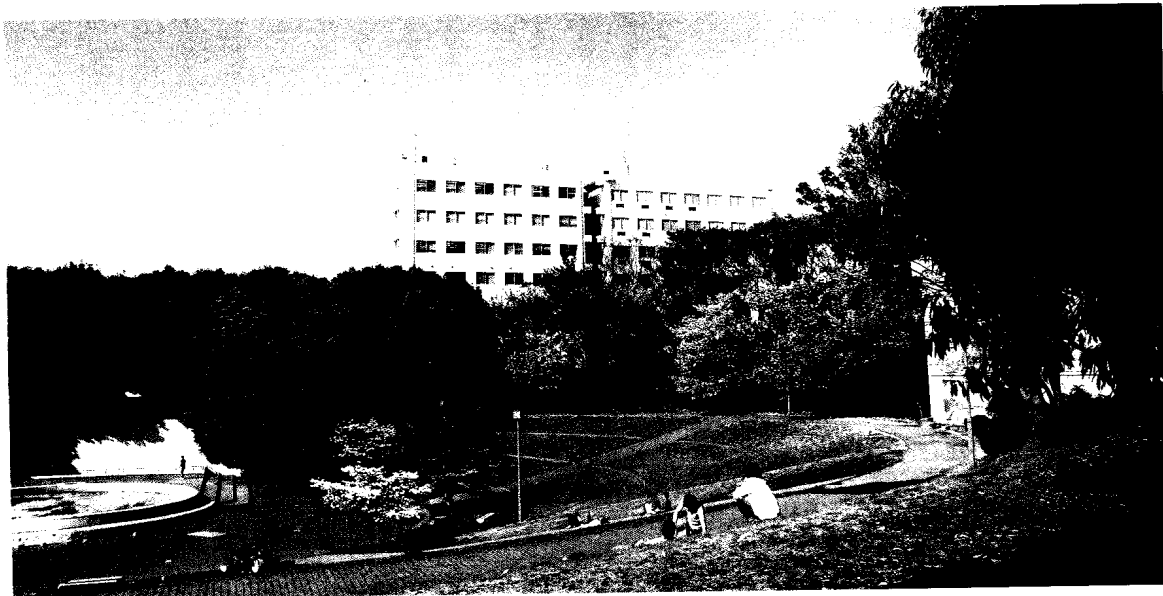


Taro Akiyama
Chairperson of Department of Economics
International Graduate School of Social Sciences
Dean of the Faculty of Economics

Objectives of the Program

The primary motivation for the establishment of the PPT program stems from the belief that the absence of well-structured tax laws and functioning taxation systems is one of the major factors hindering economic development in developing countries. Prompted by this conviction, the Department of Economics in the International Graduate School of Social Sciences, in collaboration with Japan's National Tax Agency and the World Bank, has developed a special graduate program tailored to the needs of students from developing countries who are currently working in the field of tax administration and related areas.

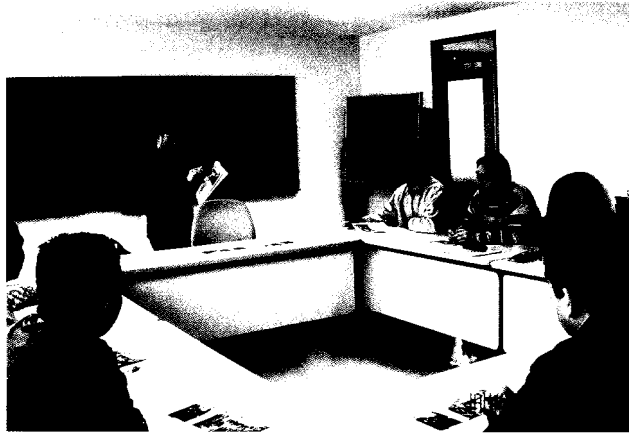
The objectives of the PPT program are: firstly, to develop a basic understanding of public policy and taxation; secondly, to teach the concepts and methods of an entire taxation process through an internship program provided by Japan's National Tax Agency; and lastly, to offer specialized courses of study on various aspects of public policy and taxation which are most relevant to the students' home countries. The students trained under this program are expected to return to their home countries to apply their acquired knowledge and skills towards improving public service in their respective countries.



Scholarship Details

The World Bank annually awards five scholarships to the PPT program. The first level of screening of candidates will be done at Yokohama National University. The final decision regarding scholarship recipients will be made by the World Bank.

The scholarship covers a monthly allowance of JPY170,000 (pending budget proposal), and a round-trip air ticket to Japan plus a travel allowance of JPY60,000. The monthly stipend is intended to cover living, commuting and other incidental expenses during the student's study period. The next scholarship program runs from April 2009 to March 2011. This cannot be changed under any circumstances. In addition, the scholarship covers tuition, entrance examination and admission fees. Travel expenses for some program-sponsored field trips are also included.



JOINT JAPAN/WORLD BANK GRADUATE SCHOLARSHIP PROGRAM EMPLOYMENT POLICY FOR JJ/WBGSP SCHOLARS

The Grant Agreement between the World Bank and the Government of Japan states: "It is anticipated that scholars would return to their countries to apply their enhanced knowledge and skills towards helping accelerate the pace of economic and social development."

To maintain high levels of home return, it has been an established agreement between the Government of Japan (the sole Program donor) and the World Bank that JJ/WBGSP scholars are not entitled to seek employment of any kind at the World Bank or the International Monetary Fund (IMF) for three years after they finish their academic program.

The three-year employment restriction applies to World Bank and IMF headquarters and field offices. This restriction covers regular staff appointments, short term consulting contracts, and all other types of employment during the three-year period.

Academic Program

Degree Requirements

In order to complete the PPT program, candidates must write a graduate thesis on a topic that candidates select under the guidance of a faculty advisor. In addition, candidates must complete the following credit requirements for the Master's Degree in Economics.

Credits Required for Master's Degree	
Elective Courses	24
Internship	4
Thesis Instruction	4
Total Credits	32

Course Offerings

Courses offered over the latest two academic years (subject to change in the next academic year)

	Course Title	Credit
Non-Degree Compulsory Courses*	Mathematics for Economists	2
	Computing for Economists	2
	Basic Japanese 1	2
	Basic Japanese 2	2
	Special Topic Lectures	2
Elective Courses	Macroeconomics	2
	Microeconomics	2
	Japanese Culture and Society	2
	Economic Systems	2
	Public Finance	2
	Public Economics	2
	Quantitative Analysis	2
	World Economy	2
	Analysis of Economic Growth	2
	Japanese Business	2
	International Economics and Public Policy	2
	Industrial Economics and Public Policy	2
	Environment and Development	2
	Tax Law of Japan 1	2
	Tax Law of Japan 2	2
	Economic Development	2
	Comparative Studies on Policies for SMEs	2
	Technology Strategy for Development	2
	International Finance	2
	Applied International Trade	2
Internship (Practicum at the NTA)	Internship 1	2
	Internship 2	2
Thesis Instruction	Thesis Instruction 1	2
	Thesis Instruction 2	2

*These subjects are compulsory and are not credited towards the Master's degree. The 24 credits required for the degree must be taken from the elective courses.

A. COURSE DESCRIPTIONS

Mathematics for Economists: Introduction to concepts and methods of algebra, calculus and matrix algebra for students with no such previous knowledge. This course is designed to increase the basic mathematical skills and knowledge of students to understand economics, statistics and optimization theory.

Computing for Economists: The students learn computing and communication techniques using PCs. Upon completion they will be able to write a thesis, analyze data, collect information, communicate and make a presentation with PCs.

Basic Japanese 1, 2: The two units constitute an integrated introduction to Japanese. They assist the students to develop the functional ability to communicate in the language at a survival level.

Special Topic Lectures (STL): Special Topic Lectures will be held on an irregular basis during a period of 18 months (from the first semester through the third semester), inviting scholars and researchers from both within Japan and overseas to lecture on topics related to public policy, taxation, international development, and developing economies. Attendance at STL is compulsory and 2 credits will be granted at the end of the third semester, although these cannot be counted towards the degree.

Macroeconomics: In this course, we study macroeconomics at the intermediate level. This course develops a simple framework for thinking about the determinants of variables like gross domestic product, unemployment, growth, investment, consumption, interest rates, inflation, current account and exchange rates. This framework is used to address issues of current interest, such as: what is the role of saving in determining the long run wealth of the country; what is the role of money in accounting for inflation; what are the factors accounting for the recurrent fluctuations in unemployment and output, i.e., the business cycle? This framework is also used to make judgments about what policies the government should, or should not, pursue.

Microeconomics: This course is designed to provide each student with a key set of logical tools that will be applied to real world microeconomic problems. The topics covered in this course include the theory of consumer behavior, theory of firm and market structure, and a brief introduction to the role of government. Examples will help students capture the economic intuition. The course outline includes: the basics of supply and demand, consumer behavior, individual and market demand, production, the cost of production, profit maximization and competitive supply, the analysis of competitive markets, the role of government with respect to market power, asymmetric information, and externalities, etc..

Japanese Culture and Society: This course will examine the classical and contemporary characteristics of Japanese culture and society; in relation to the phenomenon of 'transition from under-developed country to highly industrialized modern state'. Detailed consideration is given to the role of religion and daily way of thinking in the formation process of capitalism and also to popular culture, the position of women and the nature of work in Japanese companies today. Consideration will also be given to the sociological theories on Asian economic development in the 1980s and early 1990s such as the "Confucian Capitalist Thesis". Throughout the course students will be given an introduction to some source materials from both the transition and contemporary periods to provide them with a basis of understanding of the theme. A wide range of teaching aids will be used as frequently as possible, including TV recordings and playback facilities. Coursework will include some essays, but no previously detailed knowledge is required.

Economic Systems: The course provides theoretical and empirical studies of economic systems from a comparative perspective. First, students acquire the basic knowledge of the theoretical framework of institutional economics and the main institutional arrangements of the Japanese economic system, such as the main bank system, subcontractors, and long-term employment. Second, we study the structuralist macroeconomic theory of growth and distribution based on national income accounting and the applied analysis of long-term development of the Japanese economy. Third, we study the theoretical framework of Input-Output Analysis which is used to analyze the reproduction of industrial structures, and apply it to the Japanese economy. Fourth, we consider institutional changes in the Japanese corporate system and structural changes in the Japanese economy which are caused by economic integration with East Asian countries.

Public Finance: This course offers an overview of Japan's public sector finances, with emphasis on its history, institutions, contemporary issues and challenges. Participants are expected to gain basic, appropriate knowledge and insights on fiscal issues in Japan and their implications for cases in other countries. The course includes such items as: the public sector in Japan, historical background and the characteristics of postwar public finance, introduction to contemporary issues, budgetary institutions, the budget cycle, and expenditure management, taxation, debt management in the Japanese context, social security and social insurance schemes, local government finance and decentralization, etc.

Public Economics: Using an intermediate level of microeconomics, this course examines the implications of public policies on individual (households and firms) behavior and its consequences for individual welfare. This course is particularly suited for those who are looking for topics for their M.A. thesis in such areas as optimal taxation, cost-benefit analysis, and public choice.

Quantitative Analysis: This course acquaints students with statistical and econometric models used as tools for evaluating the effects of public policies. Students are required to be familiar with basic statistical concepts and principles. They will become familiar with relevant software such as EViews. Empirical homework is assigned to students to analyze actual economic data.

World Economy: This course surveys some prevalent theories of international production and the activities of transnational corporations in the world economy. After reviewing the conditions which have led to the growth of transnational activities in the past few decades, we will focus on the theories of foreign direct investment and multinational corporations which are responsible for such activities. The Hymer and Kindleberger approach, the product life cycle model, internalization approach and some other theories will be taken up to be discussed in this course. Finally, we will discuss the impact and effects of transnational corporations' activities on national economies and taxation.

Analysis of Economic Growth: The purpose of this course is to explore theoretical determinants of economic growth and based on traditional growth models and empirical measurements, to examine the considerable forces that can affect the development of an economy. Some case studies may be visited in discussion.

Japanese Business: This course looks at the historical changes in corporate management, business practices and strategies in the Japanese economy. It also looks at the globalization process of Japanese companies, management methods and styles. The course further includes comparative case studies of local and global companies which are successful and topical.

International Economics and Public Policy: The goal of this course is to first review basic international trade theory and then focus on theory related to current trade debates. In particular, we will study theories dealing with the effects of anti-dumping and preferential trade areas. Some empirical studies will also be covered.

Industrial Economics and Public Policy: This course is concerned with the application of microeconomics and game theory to the study of the structure of firms and markets and their interactions. The first half of the course reviews the basic material from microeconomics and game theory: perfect competition, monopoly, oligopoly, monopolistic competition, normal-form games, and extensive-form games. The second half of the course covers some of the topics that are essential for applying the theories of industrial organization to real world problems: strategic behavior, price discrimination through quantity discounts and tie-in sales, vertical integration and vertical restrictions, limited information, network externalities, advertising, antitrust policy, and government regulation. Emphasis is on how the analytic tools developed in the course can be used to examine these issues.

Environment and Development: This course is intended to cover major issues related to the theme of environment and development. The purpose of this lecture is to help the students deepen their understanding of basic models, concepts and key ideas concerning environmental policy, sustainable development, economic growth and urbanization. The challenges of international cooperation in the field of environmental cooperation including the recent development of clean development mechanisms [CDM] and the joint implementation [JI] (of Kyoto Protocol) will also be discussed. Emphasis will be placed upon the study of the philosophy of 'sustainability' (economic development within stringent environmental constraints). Not only a narrow issue of environmental policy such as emission control and recycling but a much broader concept of 'greening' of economic policy ('greening' of our political and economic systems) will be explored. The former narrow idea is often referred to as an 'End of the Pipe Technology' [EPT] approach; the focus of this lecture is rather on how we should go beyond this EPT approach. We will also study the issue of good governance, a key element in efficient implementation of conservation policy. Good governments can be considered a crucial factor in making a 'sustainable society' come true.

Tax Law of Japan 1, 2 : This course explores the general principles of major substantial tax laws in Japan. The subject commences with an examination of the Japanese tax system and the basic structure of tax administration. Then, it examines the various issues relating to substantial tax laws, such as the income tax law, corporation tax law, and national consumption tax law. This course also explores the general principles of procedural tax law in Japan.

Economic Development: Some important points about economic development are discussed in this course. Firstly, the lecture will cover the SNA system and more broadly the satellite system which integrates environmental as well as economic accounting at a macro level. Secondly, we will explore the Japanese model of economic development at a micro-level. In addition, lectures on the importance of not only growth, but environmental protection and social development will be included.

Comparative Studies on Policies for SMEs: Despite the popular trend in Japan that policies for SMEs in general are no longer necessary, most countries are focusing on the important roles played by SMEs in their economies, regardless of their developed, newly industrialized, developing or emerging market status. Obviously there exists a considerable divergence which reflects the

differences in their histories, economic structures and social systems. In the 1990s it can be found that the philosophies and ideas of the public policies for the SMEs have much in common across developed countries, and which indicates ‘globalization of the SME problematique’, ‘localization of SME policies’ and ‘socially-oriented SME policy initiatives’. This course is intended to illustrate the ideological and theoretical complex concerning debates on policies for SMEs in a global context, and to revisit the universal meaning of ‘SME problematique’ and the necessities of SME policies. In addition, it examines the mainstream philosophy and measures of Japanese SME policies after 1999, and assesses its ‘business start-ups, business innovation and creative activities’ policy ideas at work in the 21st century.

Technology Strategy for Development: This course provides basic knowledge on technology strategy mostly at the national level and on Japan’s industrial technology policy. The course first clarifies the importance of technology for both developing and developed countries. Then, the first half discusses the issues of technology development mainly for developing countries. The latter half discusses Japan’s industrial technology policy in the past and at present. The topics on the Japan’s policy include such hot issues as R&D evaluation and university spin-offs as a means of university-industry collaboration.

International Finance: The objective of this course is to study international finance (i.e., exchange rates and open-economy macroeconomics, and the international monetary system) at an intermediate level. First, students will acquire the basic knowledge of national income accounting and the balance of payments. Next, we will learn the development of conceptual and empirical models of exchange rate behavior. The Mundell-Fleming model and the impact of macroeconomic policies under floating and fixed exchange rates will be studied. We will also study a history of the international monetary system and the causes and consequences of the Asian currency crisis in 1997-98. Finally, we will discuss the feasibility of regional monetary integration in East Asia. Throughout this course, a number of empirical and case studies will be presented and discussed so that students can deepen their knowledge and understanding of the theoretical models and their empirical application.

Applied International Trade: The course will cover a number of issues both theoretical and empirical in international economics. The fundamental theories of trade and trade policies will be reviewed and empirical studies of some of these theories will be critically examined. The latter half of the course will study two issues in detail, namely: antidumping duties and Preferential Trade Areas (PTAs).

B. INTERNSHIP (Practicum at the NTA)

The National Tax Agency (NTA) is an external organ of Japan’s Ministry of Finance and carries out the assessment and collection of domestic taxes.

The NTA offers a staff training and research institute through its National Tax College (NTC), and this college offers many training programs for NTA staff as well as officials of developing countries.

The purpose of the NTA Practicum is to provide students with the opportunity to attend lectures given by tax officials who are currently in charge of tax administration and to visit places where tax administration is actually carried out. The Practicum is also intended to help students to gain some practical educational experiences in tax administration.

Lectures

Japanese Tax System: The members of the NTC faculty offer the course on the fundamentals of the Japanese tax system and principal tax laws concerning the Income Tax, Corporation Tax and Consumption Tax. This course is a prerequisite for the subsequent course on Japanese tax administration.

Japanese Tax Administration: Lectures will be given on specific topics such as the administrative work involved with each tax, public relations, tax examination, criminal investigation, revenue management and collection and the appellate system. Each lecture is given by an NTA official as well as members of the NTC faculty.

Special Lectures: Special lectures will also be given by top-level NTA officials and visiting lecturers. These periodic presentations will focus on recent tax issues.

Individual research and discussions with Japanese tax officials working in different areas of tax administration

Individual Research: Utilizing the knowledge acquired in the coursework, and with the assistance and guidance of professors and instructors of the NTC, students are required to write a research paper. For the paper, students choose one major issue/problem that his/her tax administration faces and present a recommendation/solution to the issue/problem. (Therefore, students are strongly urged to bring with them relevant data and research materials from their own home countries.)

Discussions with Japanese Tax Officials: To complement the coursework with practical experiences, students are encouraged to interact and exchange views on various tax issues with Japanese tax officials who are responsible for tax administration.

Quasi-Tax Treaty Negotiation

Students will be given an opportunity to conduct a Quasi-Tax Treaty Negotiation. In order to provide students with sufficient knowledge for tax treaty negotiation, a one-week tax treaty intensive course will be held at Wako Campus of NTC in March 2008.

Field Trips

To broaden the practical experience of the students, various field trips are also planned to visit regional taxation bureaus, tax offices, and so on. These visits will allow students to have Q & A sessions with tax officials and observe the actual work in progress.

C. THESIS INSTRUCTION

A requirement for achieving a Masters degree in Economics is writing a thesis that is then deemed acceptable by a committee of three professors. Each student will choose an original thesis research topic and be responsible for writing the thesis in English. A faculty advisor will be assigned to each student to supervise him/her through this process. Additionally, a course titled “Thesis Instruction” teaches students important skills in thesis writing.

Field Trips

Occasional field trips to cities and towns outside the Tokyo metropolitan area will be organized to hold intensive study seminars outside the campus and visit and observe local and regional tax offices at work. The place and frequency of field trips will also depend on budgetary constraints.



Academic Calendar

2009	April	Entrance Ceremony and Orientation Beginning of the first semester
	August	Summer recess
	September	Special Topic Lectures Field Trip End of the first semester
	October	Beginning of the second semester
	March	End of the second semester
2010	April	Beginning of the first semester of the second year
	August	Summer recess
	September	End of the first semester
	October	Beginning of the second semester
2011	February	Submission of Master's thesis
	March	Thesis Defense Graduation Ceremony

MASTER'S PROGRAM IN PUBLIC POLICY AND TAXATION
(YOKOHAMA NATIONAL UNIVERSITY MARCH 22, 2007)



Applying to the Program

Eligibility

Applicants should:

1. be between the age of 25 and 45
2. be nationals of a World Bank borrowing member country;
3. be mid-career professionals in public service;
4. be of good character, a team player and active in extracurricular activities;
5. hold, at minimum, a Bachelor's degree or its equivalent in a development-related field; and
6. have at least four years of recent full-time professional experience in a field related to economic development or public policy, in the applicant's home country or in another developing country

The following applicants are not eligible:

1. those currently pursuing a Master's or Ph.D. program in industrialized countries;
2. those who have had one or more years of training/studies and/or residency in an industrialized country;
3. permanent residents/nationals of industrialized countries;
4. Executive Directors, their Alternates, and staff of the World Bank Group (the World Bank, International Finance Corporation (IFC), Multilateral Investment Guarantee Agency (MIGA) and International Center for Settlement of Investment Disputes (ICSID) including consultants, as well as their close relatives.

Priority consideration will be given to applicants who:

- (a) are 35 years old or less,
- (b) are currently holding an official position in the field of tax administration,
- (c) can receive an official leave of absence during the period of study,
- (d) are planning to return to the equivalent position (including the current one) in their home country after s/he completes the program,
- (e) are recommended by appropriate government agencies, and
- (f) submitted GRE scores.

Application Requirements

The following are the documents to be submitted in addition to the application form:

- 1. English Proficiency:** Each applicant must demonstrate a proficiency in English sufficient for undertaking instruction in that language. In this regard, a minimum

TOEFL score of 550 for the paper-based, 213 for the computer based, 79 for the internet based or IELTS score of 6.0 is required for entrance into the program. The only documents we accept are official TOEFL scores sent directly by Educational Testing System (ETS) or official IELTS score sent directly by the British Council. Please refer to the TOEFL webpage at <http://www.toefl.org> or the IELTS webpage at <http://www.britishcouncil.org/learning-ielts.htm> where you can obtain information regarding the examination. The institution code for Yokohama National University is 0410 for TOEFL. Choose 84 (economics) as the department code. The only exception is the case in which the primary language of instruction at the applicant's undergraduate institution is English. In this case, you must include an official letter obtained from the university confirming this information. In any event, those applicants who do submit TOEFL or IELTS scores will be given priority in the selection process. We do NOT accept copies of TOEFL and IELTS scores directly sent by applicants, the results of the TOEFL institutional exam, or any other exams conducted by private agencies.

2. **Two letters of recommendation:** One must be from a supervisor at your workplace, and the other must be from a faculty member of the university from which you obtained your bachelor's degree. Each letter must be in a sealed envelope.
3. **Official academic transcript:** We only accept the official transcript in a sealed envelope issued by your university or school.
- 4 **Statement of purpose** (1,200 words or less): Be concise and specific in preparing your statement, giving information which will aid the selection committee in evaluating your potential for completing the program. Use the form provided with the application form, attaching an additional sheet if needed. Please type.

Telephone interviews may be conducted to assess English proficiency and/or to confirm any other information contained in the applicant's file.

Lastly, although this is not required, if you have taken the GRE, please have the official score sent to the program. Those who present GRE scores will be considered favorably in the selection process.

How to Apply

The following materials constitute your application.

- ◇ Application Form
- ◇ Statement of Purpose
- ◇ Two Confidential Letters of Recommendation
- ◇ Return Address Labels
- ◇ Official Academic Transcript
- ◇ Official TOEFL/IELTS Score or a letter from your undergraduate institution confirming that the primary language of instruction is English.
- ◇ Official GRE Score (if available)

Your application should be sent to the following address.

**MPE Office
International Graduate School of Social Sciences
Yokohama National University
79-4 Tokiwadai, Hodogaya-ku
Yokohama, 240-8501 JAPAN**

Use the original copy of the application form. We do not accept photocopies.

We do not accept applications via fax nor email.

Please note that none of the application materials can be returned to applicants under any circumstances. Also, a medical certificate will be required upon acceptance.

Application Deadline

Applications for the 2009 admission must reach the MPE Office by NO LATER than September 30, 2008.

Lousing

YNU has two residential halls for foreign students: Minesawa International Student Dormitory and Ooka International Student Dormitory. Students enrolled in the Master's Program in Public Policy and Taxation (PPT students) will be accommodated in single rooms at one of these dormitories during the first year of study. It is strongly recommended, therefore, that families do not accompany students until they become familiar with living conditions in Yokohama and feel capable of finding suitable accommodations of their family on their own. Students will have to move to private lodging facilities for the second year of study.



Medical Care

YNU has a health service center where you can receive an annual medical examination and routine health care from doctors free of charge.

Students are required to join the National Health Insurance Scheme, which will entitle students to be covered for 70% of the medical costs at a clinic or hospital. The insurance premium will be paid by the JJ/WBGSP. Insurance is provided only for students and does not cover family members. The Medical Fee Reimbursement Plan for Foreign Students provides additional cover for students. The reimbursement amounts to 35% of medical expenses incurred under the National Health Insurance Scheme. Thus by combining the two schemes, students will only have to pay 19.5% of actual medical costs.



Yokohama National University

Yokohama National University (YNU) was established in 1949 under the National School Establishment Law as one of the new national universities after World War II. Despite being a relatively new university in Japan, YNU has grown to be one of the prestigious nation's universities with a remarkable history and a number of talented graduates who have made distinguished contributions in academics, politics and the business community.

There are currently four undergraduate faculties: Education and Human Sciences, Economics, Business Administration, and Engineering; and four graduate schools: the Graduate Schools of Education, Social Sciences, Engineering, and Environment and Information Sciences. Additionally, there are over a dozen common facilities for research and education, such as the Cooperative Research and Development Center, International Student Center, Information Processing Center, Instrumental Analysis Center, Health Service Center, etc., and an affiliated elementary school and a junior high school. As of 2007, there are 718 full-time faculty members and 10,527 students enrolled in undergraduate and graduate programs. YNU also has 766 international students from 65 countries.

In April 1999, four graduate schools in social sciences (Economics, International Development Studies, Business Administration, and International Business Law) were merged into one body, named the International Graduate School of Social Sciences (IGSSS). The purpose of this new union is to articulate the international aspects of our graduate programs through their fundamental restructuring of doctoral programs for coping with the rapid expansion of 'globalization' in all fields. In particular, the Department of Economics of the IGSSS has been one of the leading institutions in the field of applied economics, international economic law and legal research, and international education in Japan. There are more than 35 full-time faculty members whose fields cover a wide range of economics.

To further expand the international dimension of the university program, four international graduate programs conducted in English have been launched successively since 1995, which are the Joint World Bank/YNU Infrastructure Management Program, a joint program of World Bank/National Tax Agency/YNU in Public Policy and Taxation, Japan/IMF Scholarship Program for Asia (Transition Economy Program in YNU), and JICA/YNU Legal Studies and Development Program. YNU had also accepted students under the Indonesian Government Scholarship Program and World Customs Organization Scholarship. These special programs in English are a distinctive feature of IGSSS and demonstrate that Yokohama National University is a leader of university globalization in Japan.

City of Yokohama

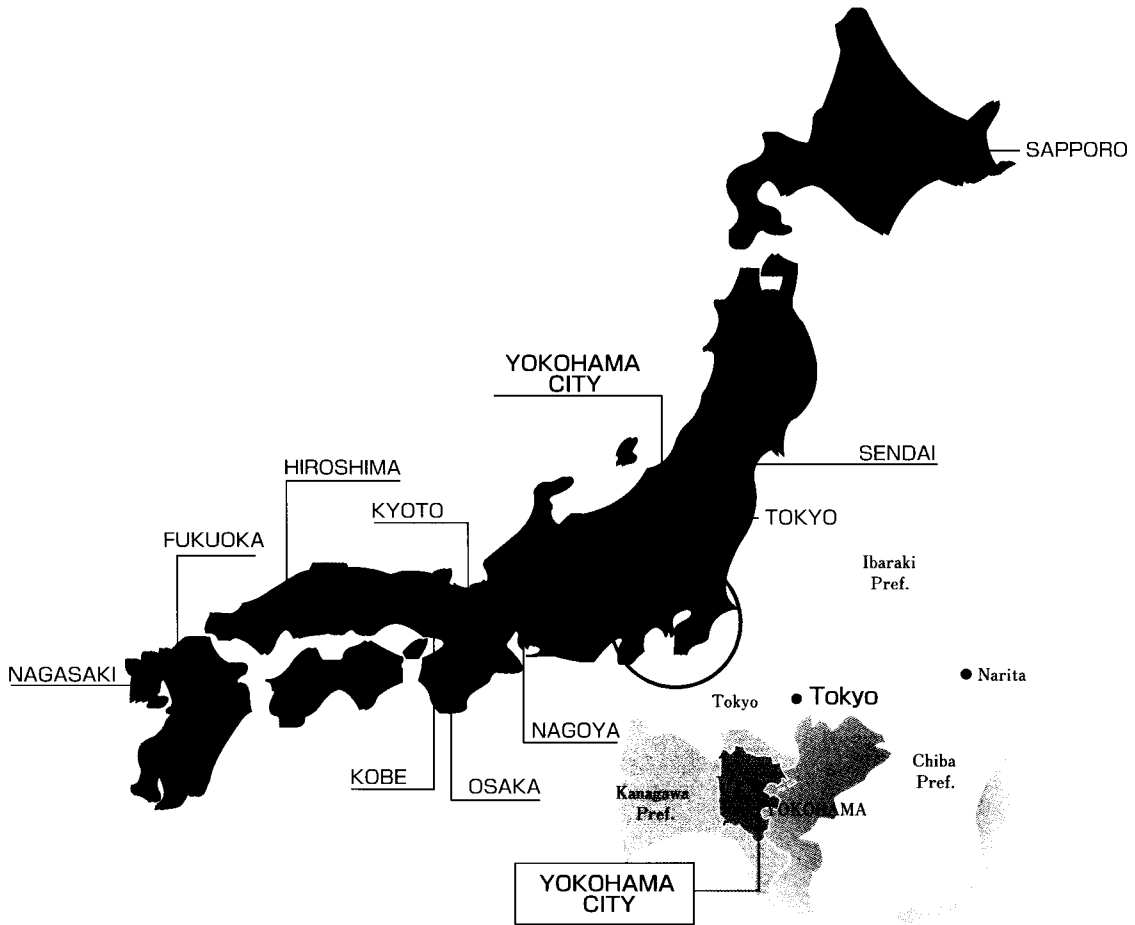
Yokohama, where the main campus of Yokohama National University (YNU) is located, is famous for its international character and history. Yokohama was a tiny fishing village of 100 houses when the Tokugawa Shogunate, forced to abandon its policy of isolation and open its doors to the world, chose Yokohama in 1859 to be one of several ports opened up to Western countries. Trading houses and foreign settlements flourished after the Meiji Restoration as the new imperial government emphasized international trade. Yokohama is proud of its history of introducing Western goods to Japan – the first bakery (1860), photo studio (1862), telephone (1869), beer brewery (1869), cinema (1870), daily newspaper (1870), public restroom (1871), and ice cream (1879).

With a population of about 3.6 million, Yokohama is now the second largest city in Japan and has the nation's largest international trading port. Yokohama is situated on a peninsula on the western coast of Tokyo Bay about 30 km south of Tokyo, the capital of Japan. Yokohama is well-known as an international, cosmopolitan city. Japan's largest Chinatown, the scenic area known as "the Bluff" with historic Western-style homes and the modern, waterfront area all contribute to making Yokohama an exotic juxtaposition of Japanese, Western and Chinese cultures.

Yokohama is also a city of the future. Looking ahead to changes in global trade and economy, the city has an ambitious plan to expand the Port of Yokohama as a logistics hub. Minato-Mirai 21, a completely new urban development along the waterfront area, has a conference center, offices, museums, condominiums, hotels, shops and restaurants. It serves as a center for international companies and high-technology research and development institutes.

Yokohama has four distinct seasons, as does most of Japan. Yokohama enjoys a mild climate throughout the year with an average temperature of 16-17°C. Summer can be muggy, with temperatures exceeding 30°C. The weather in winter is mild with a temperature range of 5-10°C with little snowfall. Spring and fall are very pleasant and a wonderful time for enjoying the outdoors. But Yokohama has something for every season – cherry blossoms in spring, summer festivals, colorful autumn leaves – just to name a few. Every day is an opportunity to enjoy the beautiful sights and enriching experiences of the city of Yokohama.

The Location of Yokohama





Bird's-eye view of the YNU campus

Master's Program in Public Policy and Taxation

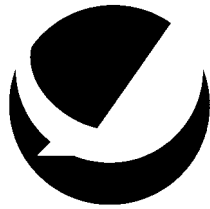
**International Graduate School of Social Sciences
Yokohama National University**

79-4 Tokiwadai, Hodogaya-ku, Yokohama 240-8501 JAPAN

Phone: +81-45-339-3510 Fax: +81-45-339-3608

Email: is-mpe@ynu.ac.jp

Website: <http://www.igss.ynu.ac.jp/index-e.htm>



YOKOHAMA
National University

APPLICATION CHECKLIST

MASTER'S PROGRAM IN PUBLIC POLICY AND TAXATION

YOKOHAMA NATIONAL UNIVERSITY

Use the checklist below to make sure you have completed all the required documentation before submitting your application. This is provided for your information only. **Do not send this checklist in with your application.**

Application deadline is **September 30, 2008.**

- Application Form
- Statement of Purpose
- Two Confidential Letters of Recommendation
- Official Academic Transcript
- Official TOEFL/IELTS Score Record or a letter from your undergraduate institution confirming that the primary language of instruction is English.
- Official GRE Score (if available)
- Return Address Labels

APPLICATION FORM FOR ADMISSION IN 2009-2010 ACADEMIC YEAR
MASTER'S PROGRAM IN PUBLIC POLICY AND TAXATION
YOKOHAMA NATIONAL UNIVERSITY

PLEASE TYPE OR PRINT CLEARLY

1. Have you previously made an application to the program? No Yes

2. Last Name _____
First Name _____
Middle Name _____

Attach here a
 photograph taken
 within the last 6
 months.

3. Gender Female Male

4. Birth date (month/day/year) _____/_____/_____
 Age (as of April 1, 2009) _____

5. Country of Citizenship _____

6. Marital Status Single Married

7. Mailing Address

Office
 Department _____
 Institution _____
 Address _____

 Zip code _____
 Country _____
 Phone _____/_____/_____
Country code Area code Phone number
 Fax _____/_____/_____
 E-mail _____

Home
 Address _____

 Zip code _____
 Country _____
 Phone _____/_____/_____
Country code Area code Phone number
 Fax _____/_____/_____
 E-mail _____

8. Proof of English Proficiency. Please check which of the following you will provide:
 TOEFL IELTS Official University Letter

Date of test _____ Date of test _____

TOEFL and IELTS must be sent directly from testing centers to YNU.

APPLICATION FORM FOR ADMISSION IN 2009-2010 ACADEMIC YEAR

MASTER'S PROGRAM IN PUBLIC POLICY AND TAXATION

YOKOHAMA NATIONAL UNIVERSITY

9. **Education** List all institutions where you have received or will receive a degree. In addition, list all other post-secondary institutions attended. (Most Recent First)

1. **Institution** _____

Location (city/country) _____

Major Field _____ Degree/Diploma _____

Dates Attended _____ Date Deg Rec'd/Expected _____

2. **Institution** _____

Location (city/country) _____

Major Field _____ Degree/Diploma _____

Dates Attended _____ Date Deg Rec'd/Expected _____

3. **Institution** _____

Location (city/country) _____

Major Field _____ Degree/Diploma _____

Dates Attended _____ Date Deg Rec'd/Expected _____

10. **Employment** (Most Recent First)

1. **Name of Employer** _____

Location (city/country) _____

Position/Title _____

Dates (month/year): from _____ to _____

2. **Name of Employer** _____

Location (city/country) _____

Position/Title _____

Dates (month/year): from _____ to _____

3. **Name of Employer** _____

Location (city/country) _____

Position/Title _____

Dates (month/year): from _____ to _____

11. List other graduate schools you are applying for (if any)

APPLICATION FORM FOR ADMISSION IN 2009-2010 ACADEMIC YEAR

MASTER'S PROGRAM IN PUBLIC POLICY AND TAXATION

YOKOHAMA NATIONAL UNIVERSITY

12. List the major previous scholarships and fellowships you have held both as a graduate and as an undergraduate student.

1. Award Title _____

Institution _____ Dates or Academic Year _____

2. Award Title _____

Institution _____ Dates or Academic Year _____

3. Award Title _____

Institution _____ Dates or Academic Year _____

13. List major academic recognition, honors, and memberships

14. List the names of the people who will be submitting letters of recommendation. Ask the recommenders to use your full name as it appears on your application.

1. Name _____ Title _____

Institution _____

Location (city/country) _____

2. Name _____ Title _____

Institution _____

Location (city/country) _____

15. Person to be notified in applicant's home country in case of emergency

Name _____

Address _____

Phone Number _____ Relationship _____

16. I certify that I have read all instructions and that information in this application is true and complete. I understand that misrepresentation may be cause for canceling my admission. I understand that all credentials and documents I submit become the property of Yokohama National University.

Print Name _____

Signature _____ Date _____

APPLICATION FORM FOR ADMISSION IN 2009-2010 ACADEMIC YEAR

MASTER'S PROGRAM IN PUBLIC POLICY AND TAXATION

YOKOHAMA NATIONAL UNIVERSITY

STATEMENT OF PURPOSE (1,200 words or less)

Please type or print.

Print Name _____

Signature _____

Date _____

For Admission in 2009-2010 Academic Year