

North Block, New Delhi-1
Dated the 9th July, 2009.

TRAINING CIRCULAR

Subject : The Master's Degree Program in "Public Policy and Taxation" at Yokohama National University, Japan – 2010-2012.

The undersigned is directed to state that the World Bank has invited applications for a Master's Degree Program in Public Policy and Taxation. The programme is sponsored by the Joint Japan/ World Bank Graduate Scholarship Program (JJ/WBGSP). The Programme will commence from April 2010 and will conclude in March 2012. The details of the programme and the application form may be drawn from Ministry of Personnel, Public Grievances and Pensions website (persmin.nic.in).

2. The objective of the Program is to develop a basic understanding of public policy and taxation, concepts and methods of an entire taxation process and offers specialized courses of study on various aspects of public policy and taxation.
3. The candidate should be between the age of 25 and 45 years; be mid-career professional in public service; be of good character, a team player and active in extracurricular activities; hold a Bachelor's degree or its equivalent in a development-related field; and have at least four years of recent full-time professional experience in a field related to economic development or public policy, in the applicant's home country or in another developing country; and be proficient in written and spoken English. The applicants who submit TOEFL or IELTS scores will be given priority in the selection process.
4. The Scholarship covers a monthly allowance of JPY 170,000 (the amount is subject to change) and a round-trip air ticket to Japan plus a travel allowance of JPY60,000. The monthly stipend covers the living, commuting and other incidental expenses during the student's study period. In addition the scholarship covers tuition, entrance examination and admission fees. Travel expenses for some programme-sponsored field trips are also included.
5. It is requested that the nomination of the suitable candidates may please be forwarded to this Department in accordance with the eligibility criteria and the terms and conditions of the World Bank's Circular dated 9th June, 2009. The Ministry/ State Governments may sponsor the names of only Government/ Public Sector Undertaking functionary. The nomination details should be submitted only in the YNU's prescribed proformas alongwith the requisite enclosures.
6. The applications should reach this Department through proper channel not later than 21st September 2009. Nominations received after the prescribed date will not be considered. The circular inviting applications for training courses is available on this Department's website persmin.nic.in


(Trishaljit Sethi)
Director

1. The Secretary, Department of Revenue, North Block, New Delhi.
2. All State Governments/ Union Territories.
3. Director (Technical), NIC with the request to post the circular along with the World Bank's circular and the enclosed brochure/application Proformas on the Department's website.



YOKOHAMA NATIONAL UNIVERSITY
INTERNATIONAL GRADUATE SCHOOL OF SOCIAL SCIENCES
79-4 Tokiwadai, Hodogaya-ku, Yokohama 240-8501 JAPAN

To whom it may concern,

Thank you for your interest in the Joint Japan/World Bank Graduate Scholarship Program for Master's Program in Public Policy and Taxation at Yokohama National University. Enclosed in this packet is information regarding the program and materials for applying for this scholarship as follows:

- 2010 Program Description for the Master's Program in Public Policy and Taxation
- 2010 Application Form (includes 3 pg. form and Statement of Purpose)
- Two recommendation forms
- Two envelopes for letters of recommendation
- Envelope for submitting application
- Return Address label
- Application Checklist (for your personal use)

Please direct any inquiries you may have by fax or email to the MPE Office:

MPE Office
International Graduate School of Social Sciences
Yokohama National University
79-4 Tokiwadai, Hodogaya-ku
Yokohama 240-8501 Japan
Fax: +81-45-339-3608
Email: is-mpe@ynu.ac.jp

Inquiries by telephone will not be accepted.

Sincerely yours,

A handwritten signature in black ink, consisting of stylized Japanese characters that read "有江 大介" (Arie Daisuke).

Daisuke ARIE
Director, Master's Program in Public Policy and Taxation
International Graduate School of Social Sciences
Yokohama National University

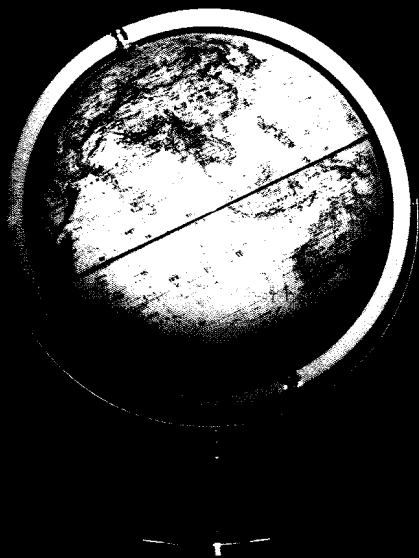
Joint Japan / World Bank
Graduate Scholarship Program for

PUBLIC
POLICY AND
TAXATION



Program Description
2010

YOKOHAMA NATIONAL UNIVERSITY



Contents

Message from the Chairperson of the Department of Economics	2
Objectives of the Program	4
Scholarship Details	5
Academic Program	6
Degree Requirements	
Course Offerings	
A. Course Descriptions	
B. Internship (Practicum at the National Tax Agency)	
C. Thesis Instruction	
Field Trips	
Academic Calendar.....	13
Applying to the Program	14
Eligibility	
Application Requirements	
How to Apply	
Application Deadline	
Housing	17
Medical Care	17
Yokohama National University	18
City of Yokohama	19

Message from the Chairperson of the Department of Economics, International Graduate School of Social Sciences

Training individuals with a solid knowledge and practical ability in economics and tax policy is one of the most important aspects to stabilize public finance and taxation systems and to formulate economic development strategies.

Deeply aware of the importance that such an international contribution of training of individuals had for Japan, the first nation to have achieved economic development in Asia, the International Graduate School of Social Sciences (IGSSS) at Yokohama National University began the Master's Program in Public Policy and Taxation (PPT program) in 1996 with cooperation from the World Bank and Japan's National Tax Agency.

This program combines systematic lectures on economics and tax policy, and an internship for acquiring practical knowledge gained in the field of Japan's tax administration at the National Tax College of the National Tax Agency. The program we offer has the longest history among similar programs in Japan and has earned a high reputation from both inside and outside Japan. We are proud to inform you that there are only 10 colleges in the world which have programs under partnership with the World Bank, including Columbia University and Harvard University in the U.S., and Tsukuba University and Keio University in Japan.

Students who pass a rigorous selection process are admitted to the program from developing nations all over the world - Asia, Africa, South America, etc. The admitted students will study in the rich educational environment of Yokohama National University's tree-filled campus.

IGSSS offers various master degree programs conducted in English in addition to this program. There is a master degree program conducted in English for Indonesian Governmental Scholarship students (IGS program) established by the request of the Indonesian and Japanese governments and funded by the Japan International Cooperation Agency (JICA). Also, IGSSS started a double-degree program in which Indonesian students study in Indonesia for one year and in this graduate school for another year. Students receive degrees from both the Indonesian university and YNU,

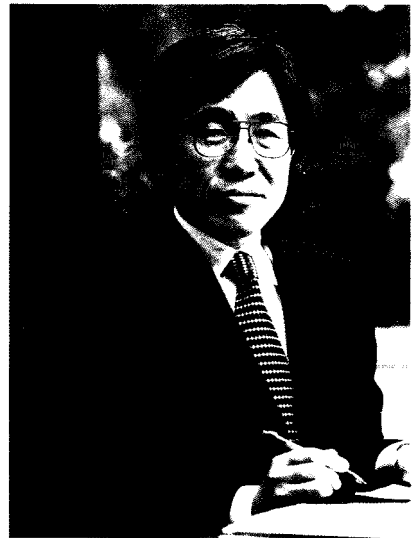
under an educational linkage agreement with two universities in Indonesia, University of Indonesia and Gaja Mada University.

Therefore, the PPT program students can acquaint themselves with students in various programs other than the already diverse group of students in the PPT program, thus expanding their international network in various ways.

Sixty graduates of this program are active in their home countries, utilizing the network they have expanded at this graduate school in addition to the knowledge and skills they gained through education in the program. We are highly proud of the accomplishments of this program so far.

We welcome applications from any bright, motivated individual who wishes to study at this graduate school to learn how to improve tax policy in developing nations and whose ideals match our own vision of making a contribution to international society in general.

大門正克



Masakatsu Okado

Chairperson of Department of Economics

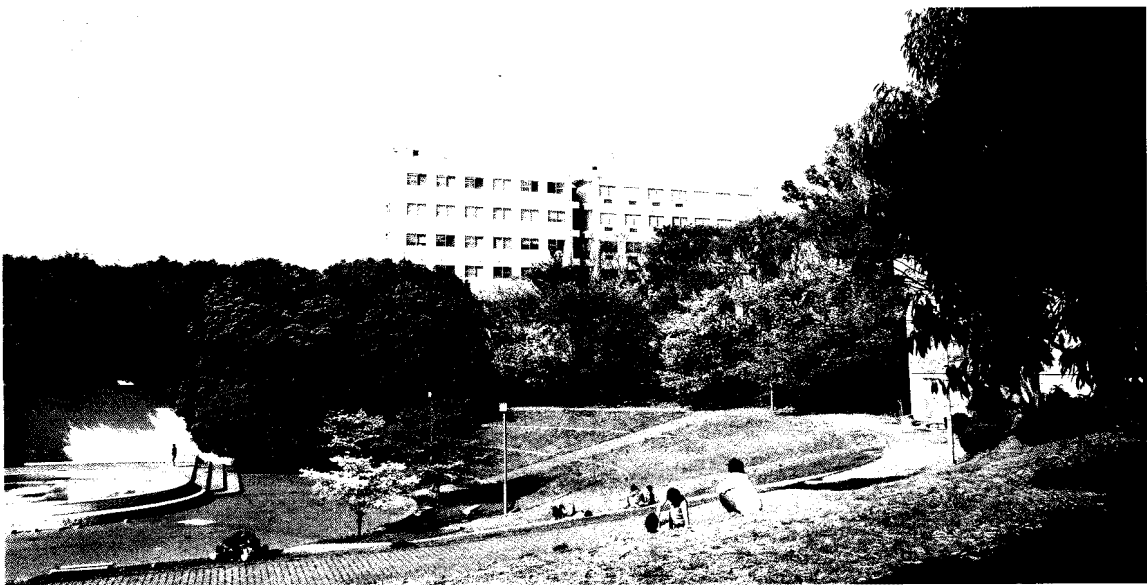
International Graduate School of Social Sciences

Dean of the Faculty of Economics

Objectives of the Program

The primary motivation for the establishment of the PPT program stems from the belief that the absence of well-structured tax laws and functioning taxation systems is one of the major factors hindering economic development in developing countries. Prompted by this conviction, the Department of Economics in the International Graduate School of Social Sciences, in collaboration with Japan's National Tax Agency and the World Bank, has developed a special graduate program tailored to the needs of students from developing countries who are currently working in the field of tax administration and related areas.

The objectives of the PPT program are: firstly, to develop a basic understanding of public policy and taxation; secondly, to teach the concepts and methods of an entire taxation process through an internship program provided by Japan's National Tax Agency; and lastly, to offer specialized courses of study on various aspects of public policy and taxation which are most relevant to the students' home countries. The students trained under this program are expected to return to their home countries to apply their acquired knowledge and skills towards improving public service in their respective countries.



Scholarship Details

The World Bank annually awards five scholarships to the PPT program. The first level of screening of candidates will be done at Yokohama National University. The final decision regarding scholarship recipients will be made by the World Bank.

The scholarship covers a monthly allowance of JPY170,000 (the amount is subject to change), and a round-trip air ticket to Japan plus a travel allowance of JPY60,000. The monthly stipend is intended to cover living, commuting and other incidental expenses during the student's study period. The next scholarship program runs from April 2010 to March 2012. This cannot be changed under any circumstances. In addition, the scholarship covers tuition, entrance examination and admission fees. Travel expenses for some program-sponsored field trips are also included.



JOINT JAPAN/WORLD BANK GRADUATE SCHOLARSHIP PROGRAM EMPLOYMENT POLICY FOR JJ/WBGSP SCHOLARS

The Grant Agreement between the World Bank and the Government of Japan states: "It is anticipated that scholars would return to their countries to apply their enhanced knowledge and skills towards helping accelerate the pace of economic and social development."

To maintain high levels of home return, it has been an established agreement between the Government of Japan (the sole Program donor) and the World Bank that JJ/WBGSP scholars are not entitled to seek employment of any kind at the World Bank or the International Monetary Fund (IMF) for three years after they finish their academic program.

The three-year employment restriction applies to World Bank and IMF headquarters and field offices. This restriction covers regular staff appointments, short term consulting contracts, and all other types of employment during the three-year period.

Academic Program

Degree Requirements

In order to complete the PPT program, candidates must write a graduate thesis on a topic that candidates select under the guidance of a faculty advisor. In addition, candidates must complete the following credit requirements for the Master's Degree in Economics.

Credits Required for Master's Degree	
Elective Courses	24
Internship	4
Thesis Instruction	4
Total Credits	32

Course Offerings

Courses offered over the latest two academic years (subject to change in the next academic year)

	Course Title	Credit
Non-Degree Compulsory Courses*	Mathematics for Economists	2
	Computing for Economists	2
	Basic Japanese 1	2
	Basic Japanese 2	2
	Special Topic Lectures	2
Elective Courses	Macroeconomics	2
	Microeconomics	2
	Japanese Culture and Society	2
	Economic Systems	2
	Public Finance	2
	Public Economics	2
	Quantitative Analysis	2
	World Economy	2
	Analysis of Economic Growth	2
	Japanese Business	2
	International Economics and Public Policy	2
	Industrial Economics and Public Policy	2
	Environment and Development	2
	Tax Law of Japan 1	2
	Tax Law of Japan 2	2
	Economic Development	2
	Comparative Studies on Policies for SMEs	2
	Technology Strategy for Development	2
International Finance	2	
Applied International Trade	2	
Internship (Practicum at the NTA)	Internship 1	2
	Internship 2	2
Thesis Instruction	Thesis Instruction 1	2
	Thesis Instruction 2	2

*These subjects are compulsory and are not credited towards the Master's degree. The 24 credits required for the degree must be taken from the elective courses.

A. COURSE DESCRIPTIONS

Mathematics for Economists: Introduction to concepts and methods of algebra, calculus and matrix algebra for students with no such previous knowledge. This course is designed to increase the basic mathematical skills and knowledge of students to understand economics, statistics and optimization theory.

Computing for Economists: This course introduces basic knowledge of computing and how to work with data in economic analysis. The objective of this course is to help the student get used to using data and computers for economic analysis, become familiar with various data sources, and develop computing and data manipulating skills which will be helpful in doing their research.

Basic Japanese 1 & 2: These two units form an integrated introduction to Japanese. They assist the students to develop the functional ability to communicate in Japanese at the survival level, while providing at the same time a solid basis necessary for those students who wish to continue studying the language in the Japanese classes offered at the International Student Centre.

Special Topic Lectures (STL): Special Topic Lectures will be held on an irregular basis during a period of 18 months (from the first semester through the third semester), inviting scholars and researchers from both within Japan and overseas to lecture on topics related to public policy, taxation, international development, and developing economies. Attendance at STL is compulsory and 2 credits will be granted at the end of the third semester, although these cannot be counted towards the degree.

Macroeconomics: In this course, macroeconomics at the intermediate level will be studied. This course develops a simple framework for thinking about the determinants of variables like gross domestic product, unemployment, growth, investment, consumption, interest rates, inflation, current account and exchange rates. This framework is used to address issues of current interest, such as: what is the role of saving in determining the long-run wealth of the country; what is the role of money in accounting for inflation; what are the factors accounting for the recurrent fluctuations in unemployment and output called the business cycle? This framework is also used to make judgments about what policies the government should, or should not, pursue.

Microeconomics: Fundamentals of economic models are studied in this course. The purpose of this course is to learn modeling of optimization behavior by individuals, firms and policy planners by using mathematical, graphical and expository methods of analysis. The course outline includes: consumer choice, income and substitution effects, producer welfare theory, market structure (perfect competition, monopoly and oligopoly) and general equilibrium.

Japanese Culture and Society: This course will examine the classical and contemporary characteristics of Japanese culture and society, in relation to the fact of 'transition from under-developed country to highly industrialized modern state'. Detailed consideration is given to the role of religion and the daily way of thinking in the formation process of capitalism; also to popular culture, the position of women and the nature of work in Japanese companies today. Consideration will also be given to sociological theory on 1990s Asian economic development such as the 'Confucian Capitalist Thesis'. Throughout the course, students will be given an introduction to some source materials from both the transition and contemporary periods for providing them with a basis of understanding of the theme. A wide range of teaching aids will be used as frequently as possible, including recordings and broadcasts.

Economic Systems: The course provides the theoretical and empirical studies of economic systems from a comparative institutional perspective. First, students acquire the basic knowledge of the theoretical framework of institutional economics and the main institutional arrangements of the Japanese Systems: the main bank system, subcontractors, and long-term employment. Second, students will study the structuralist macroeconomic theory of growth and distribution based on national income accounting and the applied analysis of long-term development of the Japanese economy. Third, the theoretical framework of Input-Output Analysis which is used to analyze changes in industrial structures, and how is it applied to the Japanese economy will be studied. Fourth, institutional changes in the Japanese corporate system and structural changes in the Japanese economy which are promoted by economic integration in East Asia will be considered.

Public Finance: This course offers an overview of Japan's public sector finances and monetary policy, with emphasis on its history, institutions, contemporary issues and challenges. Participants are expected to gain basic, appropriate knowledge and insights on fiscal and financial issues in Japan and their implications for cases in other countries. The course includes such items as: public sector in Japan, historical background and the characteristics of postwar public finance, introduction to contemporary issues, budgetary institutions, budget cycle, and expenditure management, taxation, central banking and quantitative easing policy, debt management in Japanese context, social security policy and social insurance schemes, local government finance and decentralization.

Public Economics: This course provides a basis for the economic analysis of public policy issues. As a field of applied microeconomics, public economics analyzes the role of the public sector in market economies, the implications of public policies on individual behaviors and its consequences for individual welfare. After an introduction to public economics and a brief review of the principles of microeconomics, the fundamentals of welfare economics will be studied to understand when markets work well, and when and in what ways they do not. The course will then focus on the theories of public expenditures and taxation with analyses on the actual applications of these policies. This course is particularly suited for those who are seeking topics for their M.A. thesis in such areas as optimal taxation, cost-benefit analysis and public choice.

Quantitative Analysis: This course is aimed to introduce the basic knowledge of Statistics and Econometrics as a tool for economic analysis. This course intends to equip students with (1) basic working knowledge to perform regression analysis (using Eviews) on economic data and (2) the ability to understand and analyze the result to make a sound judgment and/or conclusions based on the statistical analysis.

World Economy: This course surveys some prevalent theories of international production and the activities of transnational corporations in the world economy. After reviewing the conditions which have led to the growth of transnational activities in the past few decades, we will focus on the theories of foreign direct investment and multinational corporations which are responsible for such activities. The Hymer and Kindleberger approach, the product life cycle model, internalization approach and some other theories will be taken up to be discussed in this course. In this course, students should learn how multinational corporations do business in the modern world and how multinational corporations have an impact and effect on national economies and taxation in the world.

Analysis of Economic Growth: This course is to examine how the development of economy has reflected theory. The objectives of this course are (1) to explore theoretical understanding of economic growth, (2) to examine the considerable forces that can affect the development of economy

based on some traditional growth models, and (3) to discuss on how real issues reflect theory.

Japanese Business: Japanese Business is a multifaceted discipline that involves numerous topics. This course is primarily concerned with two representative economic phenomena peculiar to the postwar Japanese economy: the main bank system and various corporate groupings. Quite often, they have been linked both to Japan's high economic growth of the 1950s to the early 1970s, and to such other notable elements of the Japanese economy as the bank-dominant nature of the financial market and the lifetime employment pattern of the labor market. Throughout the entire classes, the students are expected to learn how the main bank system and corporate groups emerged and were developed in Japan, and the issues they are encountering nowadays. Furthermore, the students are encouraged to learn the theories that explicate their economic rationales as well.

International Economics and Public Policy: International Economics is comprised of essentially two subfields: International Trade and International Finance. This course will focus primarily on the former, in which we will study the theoretical underpinnings for the gains from trade, the costs of trade protectionism, and the inevitable short-run redistribution of income that occurs as countries interact more and more with each other. This course will give you the fundamentals to understand what economists mean when they say "Globalization is Good."

Industrial Economics and Public Policy: This course is concerned with the application of microeconomics and game theory to the study of the structure of firms and markets and their interactions. The first half of the course reviews the basic material from microeconomics and game theory: perfect competition, monopoly, oligopoly, monopolistic competition, normal-form games, and extensive-form games. The second half of the course covers some of the topics that are essential for applying the theories of industrial organization to real world problems: strategic behavior, price discrimination through quantity discounts and tie-in sales, vertical integration and vertical restrictions, limited information, network externalities, advertising, antitrust policy, and government regulation. Emphasis is on how the analytic tools developed in the course can be used to examine these issues.

Environment and Development: This course is intended to cover major issues related to the theme of environment and development. The lectures will be organized in a manner that helps the students deepen their understanding of environmental problems, and concepts and key ideas concerning environmental policy. The challenges of international cooperation in the field of environmental protection will also be discussed. Emphasis will be placed upon the study of the philosophy of 'sustainability' (i.e., economic development within environmental constraints) and policy instruments for sustainable development. Not only a narrow issue of environmental policy (such as emission control and recycling) but a much broader concept of 'greening' of economic policy (or 'greening' of our national and global economic systems) will be examined. We will also study the issue of good governance, a key element in efficient implementation of environmental policy and environmental policy in the age of globalization.

Tax Law of Japan 1, 2 : This course explores the general principles of substantial tax law in Japan. The subject commences with an examination of the Japanese tax system and the basic structure of tax administration. Then, it examines the various issues relating to substantial tax laws, such as the income tax law, corporation tax law, and national consumption tax law. This course also explores the general principles of procedural tax law in Japan.

Economic Development: Some important points of argument about economic development are discussed in this course. First, lectures are focused on the micro level around the argument of the Japanese model of economic development. Second, lectures are given about the SNA system and satellite systems as expansion in the argument of the macro level. In addition, there are also lectures regarding environmental protection and social development as factors which should be taken into consideration with growth as well.

Comparative Studies on Policies for SMEs: Despite the once popular trend in Japan that policies for SMEs in general are no longer necessary, most countries are focusing on the important roles played by SMEs in their economies, regardless of developed, newly industrialized, developing or emerging market ones. Obviously there exists a considerable divergence which reflects the differences in their histories, economic structures and social systems. In the 1990s it can be found that the philosophies and ideas of the public policies for SMEs have much in common across developed countries, which indicates a 'globalization of the SME problematique', 'localization of SME policies' and 'socially-oriented SME policy initiatives'. This course is intended to illustrate the ideological and theoretical complex concerning debates on policies for SMEs in a global context, and to revisit the universal meaning of 'SME problematique' and the necessities of SME policies. Several cases about historical developments of policies for SMEs will be taken up and comparatively examined, including U.S., U.K., EU, and Korean or Chinese ones. In addition, the mainstream philosophy and measures of Japanese SME policies after 1999 will be critically examined, including the urgent political issues of regional disparities and declining local industries and SMEs, with assessing its 'business start-ups, business innovation and creative activities' policy ideas at work in the 21st Century.

Technology Strategy for Development: This course provides basic knowledge on technology strategy mostly at the national level and on Japan's industrial technology policy. The course begins by clarifying the importance of technology for both developing and developed countries. The first half of the course discusses the issues of technology development mainly for developing countries. The latter half discusses Japan's industrial technology policy in the past and at present. The topics on Japan's policy include hot issues of R&D evaluation and university spin-offs as a means of university-industry collaboration.

International Finance: The theory and empirics of international finance (i.e., exchange rates and open-economy macroeconomics) at an intermediate level will be studied in this course. First, students will acquire the basic knowledge of national income accounting and the balance of payments. Next, we will learn the development of conceptual and empirical models of exchange rate behavior. The open-economy macroeconomic models, such as the Mundell-Fleming model, will be studied to understand the impact of macroeconomic policies under floating and fixed exchange rate systems. We will also learn various exchange rate policies and their mechanism. The model of currency crisis and the experience of East Asian countries will be taught in detail. Finally, we will discuss a new international financial architecture and the feasibility of regional monetary arrangements in East Asia. Throughout this course, a number of empirical and case studies will be presented and discussed so that students can deepen their knowledge and understanding of the theoretical models and their empirical application.

Applied International Trade: This is a course in International Trade and focuses on the trade issues between nations and people. The course will cover a number of issues both theoretical and empirical in international economics. The fundamental theories of trade and trade policies will be reviewed and empirical studies of some of these theories will be critically examined. The latter half of the course will

study two issues in detail, namely: antidumping duties and Preferential Trade Areas (PTAs).

B. INTERNSHIP (Practicum at the NTA)

The National Tax Agency (NTA) is an external organ of Japan's Ministry of Finance and carries out the collection of domestic taxes.

The NTA offers staff training to NTA officials through its training institution, the National Tax College (NTC). This college also engages in academic research on taxation while providing outreach programs for officials of developing countries.

The purpose of the NTA Practicum is to provide students with the opportunity to attend lectures given by tax officials who are currently in charge of tax administration and to visit places where tax administration is actually carried out. The Practicum is also intended to help students to gain some practical knowledge in tax administration.

Lectures

Japanese Tax System: The members of the NTC faculty offer the course on the fundamentals of the Japanese tax system and principal tax laws concerning the Income Tax, Corporation Tax and Consumption Tax (Japan's VAT). This course is a prerequisite for the subsequent course on Japanese tax administration.

Japanese Tax Administration: Lectures will be given on specific topics such as the administrative work involved with tax examination, taxpayer services, revenue management and collection, and International Taxation. Each lecture is given by members of the NTC faculty as well as NTA officials.

Individual Research and Discussions with Japanese Tax Officials

Individual Research: Utilizing the knowledge acquired in the coursework, and with the assistance and guidance of professors and assistant professors of the NTC, students are required to write a research paper. For the paper, students choose one major issue/problem that his/her tax administration faces and present a recommendation/solution to the issue/problem. (Therefore, students are strongly urged to bring with them relevant data and research materials from their own home countries.)

Discussions with Japanese Tax Officials: To complement the coursework, students are encouraged to interact and exchange views on various tax issues with Japanese tax officials who are responsible for tax administration.

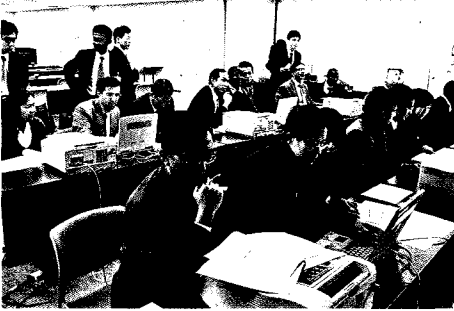
Quasi-Tax Treaty Negotiation

Students will be given an opportunity to conduct a Quasi-Tax Treaty Negotiation.

In order to provide students with sufficient knowledge for tax treaty negotiation, a one-week tax treaty intensive course will be held at Wako Campus of NTC in March 2011.

Field Trips

To broaden the practical knowledge of the students, various field trips are also planned to visit regional taxation bureaus, tax offices, and so on. These visits will allow students to have Q & A sessions with tax officials and observe the actual work in progress.



C. THESIS INSTRUCTION

A requirement for achieving a Masters degree in Economics is writing a thesis that is then deemed acceptable by a committee of three professors. Each student will choose an original thesis research topic and be responsible for writing the thesis in English. A faculty advisor will be assigned to each student to supervise them through this process. Additionally, a special course titled “Thesis Instruction” teaches students important skills in thesis writing.

Field Trips

Field trips are organized, generally on an annual basis, to provide students with an opportunity to observe local and regional government in action. Visiting places of interest that represent industry, culture, history, nature etc. of Japan will also be part of the field trip itinerary. The place and frequency of field trips will depend on the availability of budget funds.



2010	April	Entrance Ceremony and Orientation Beginning of the first semester
	August	Summer recess
	September	Special Topic Lectures Field Trip End of the first semester
	October	Beginning of the second semester
	March	End of the second semester
2011	April	Beginning of the first semester of the second year
	August	Summer recess
	September	End of the first semester
	October	Beginning of the second semester
2012	February	Submission of Master's thesis
	March	Thesis Defense Graduation Ceremony

GRADUATION CEREMONY

MASTER'S PROGRAM IN PUBLIC POLICY AND TAXATION
(YOKOHAMA NATIONAL UNIVERSITY MARCH 25, 2008)



Applying to the Program

Eligibility

Applicants should:

1. be between the age of 25 and 45;
2. be nationals of a World Bank borrowing member country;
3. be mid-career professionals in public service;
4. be of good character, a team player and active in extracurricular activities;
5. hold, at minimum, a Bachelor's degree or its equivalent in a development-related field; and
6. have at least four years of recent full-time professional experience in a field related to economic development or public policy, in the applicant's home country or in another developing country

The following applicants are not eligible:

1. those currently pursuing a Master's or Ph.D. program in industrialized countries;
2. those who have had one or more years of training/studies and/or residency in an industrialized country;
3. permanent residents/nationals of industrialized countries;
4. Executive Directors, their Alternates, and staff of the World Bank Group (the World Bank, International Finance Corporation (IFC), Multilateral Investment Guarantee Agency (MIGA) and International Center for Settlement of Investment Disputes (ICSID)) including consultants, as well as their close relatives.

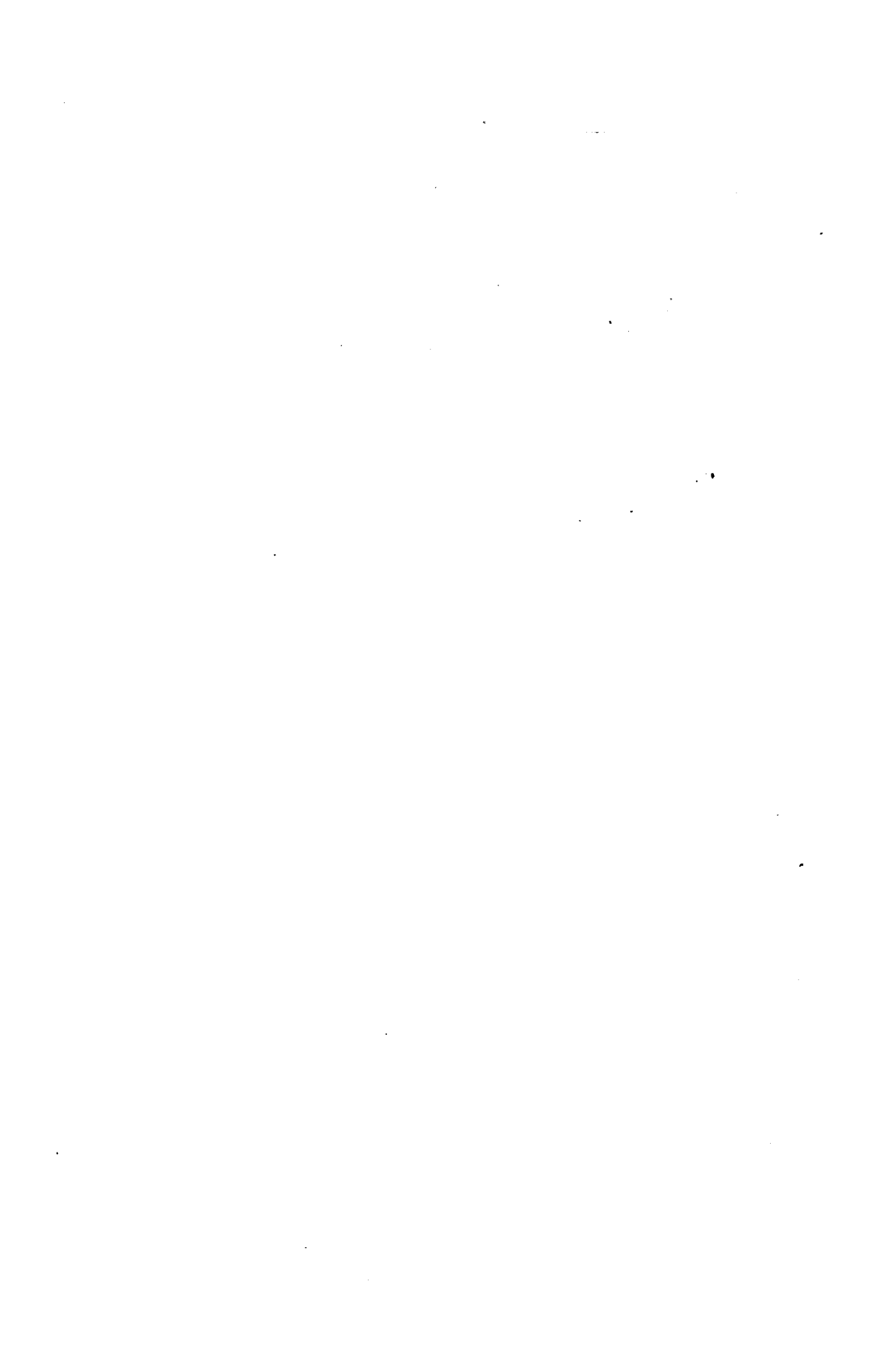
Priority consideration will be given to applicants who:

- (a) are 35 years old or less,
- (b) are currently holding an official position in the field of tax administration,
- (c) can receive an official leave of absence during the period of study,
- (d) are planning to return to the equivalent position (including the current one) in their home country after s/he completes the program,
- (e) are recommended by appropriate government agencies, and
- (f) submitted GRE scores.

Application Requirements

The following are the documents to be submitted in addition to the application form:

1. **English Proficiency:** Each applicant must demonstrate a proficiency in English sufficient for undertaking instruction in that language. In this regard, a minimum



How to Apply

The following materials constitute your application.

- ◇ Application Form
- ◇ Statement of Purpose
- ◇ Two Confidential Letters of Recommendation
- ◇ Return Address Label
- ◇ Official Academic Transcript
- ◇ Official TOEFL/IELTS Score or a letter from your undergraduate institution confirming that the primary language of instruction is English.
- ◇ Official GRE Score (if available)

Your application should be sent to the following address.

MPE Office

International Graduate School of Social Sciences

Yokohama National University

79-4 Tokiwadai, Hodogaya-ku

Yokohama, 240-8501 JAPAN

Use the original copy of the application form. We do not accept photocopies.

We do not accept applications via fax nor email.

Please note that none of the application materials can be returned to applicants under any circumstances. Also, a medical certificate will be required upon acceptance.

Application Deadline

Applications for the 2010 admission must reach the MPE Office by NO LATER than September 30, 2009.

Housing

YNU has two residential halls for foreign students: Minesawa International Student Dormitory and International Student House. Students enrolled in the Master's Program in Public Policy and Taxation (PPT students) will be accommodated in single rooms at one of these dormitories during the first year of study. It is strongly recommended, therefore, that families do not accompany students until they become familiar with living conditions in Yokohama and feel capable of finding suitable accommodations of their family on their own. Students will have to move to private lodging facilities for the second year of study.



Health Care

YNU has a health service center where you can receive an annual medical examination and routine health care from doctors free of charge.

Students are required to join the National Health Insurance Scheme, which will entitle students to be covered for 70% of the medical costs at a clinic or hospital. The insurance premium will be paid by the JJ/WBGSP. Insurance is provided only for students and does not cover family members.



Yokohama National University

Yokohama National University (YNU) was established in 1949 under the National School Establishment Law as one of the new national universities after World War II. Despite being a relatively new university in Japan, YNU has grown to be one of the prestigious nation's universities with a remarkable history and a number of talented graduates who have made distinguished contributions in academics, politics and the business community.

There are currently four undergraduate faculties: Education and Human Sciences, Economics, Business Administration, and Engineering; and four graduate schools: the Graduate Schools of Education, Social Sciences, Engineering, and Environment and Information Sciences. Additionally, there are over a dozen common facilities for research and education, such as the Cooperative Research and Development Center, International Student Center, Information Technology Service Center, Instrumental Analysis Center, Health Service Center, etc., and two affiliated elementary schools and two junior high schools. As of May 2008, there are 711 full-time faculty members and 10,362 students enrolled in undergraduate and graduate programs. YNU also has 772 international students from 62 countries.

In April 1999, four graduate schools in social sciences (Economics, International Development Studies, Business Administration, and International Business Law) were merged into one body, named the International Graduate School of Social Sciences (IGSSS). The purpose of this new union is to articulate the international aspects of our graduate programs through their fundamental restructuring of doctoral programs for coping with the rapid expansion of 'globalization' in all fields. In particular, the Department of Economics of the IGSSS has been one of the leading institutions in the field of applied economics, international economic law and legal research, and international education in Japan. There are more than 35 full-time faculty members whose fields cover a wide range of economics.

To further expand the international dimension of the university program, four Master's programs conducted in English have been launched successively since 1995, which are Joint Japan/World Bank Graduate Scholarship Program in Infrastructure Management Program, Joint Japan/World Bank Graduate Scholarship in Public Policy and Taxation, Japan/IMF Scholarship Program for Asia (at YNU, Transition Economy Program), and YNU/JDS Law and Public Policy Program. YNU also accepts students under the Indonesian Government Scholarship Program and Indonesia Linkage Master Program. These special programs in English are a distinctive feature of IGSSS and demonstrate that Yokohama National University is a leader of university globalization in Japan.

City of Yokohama

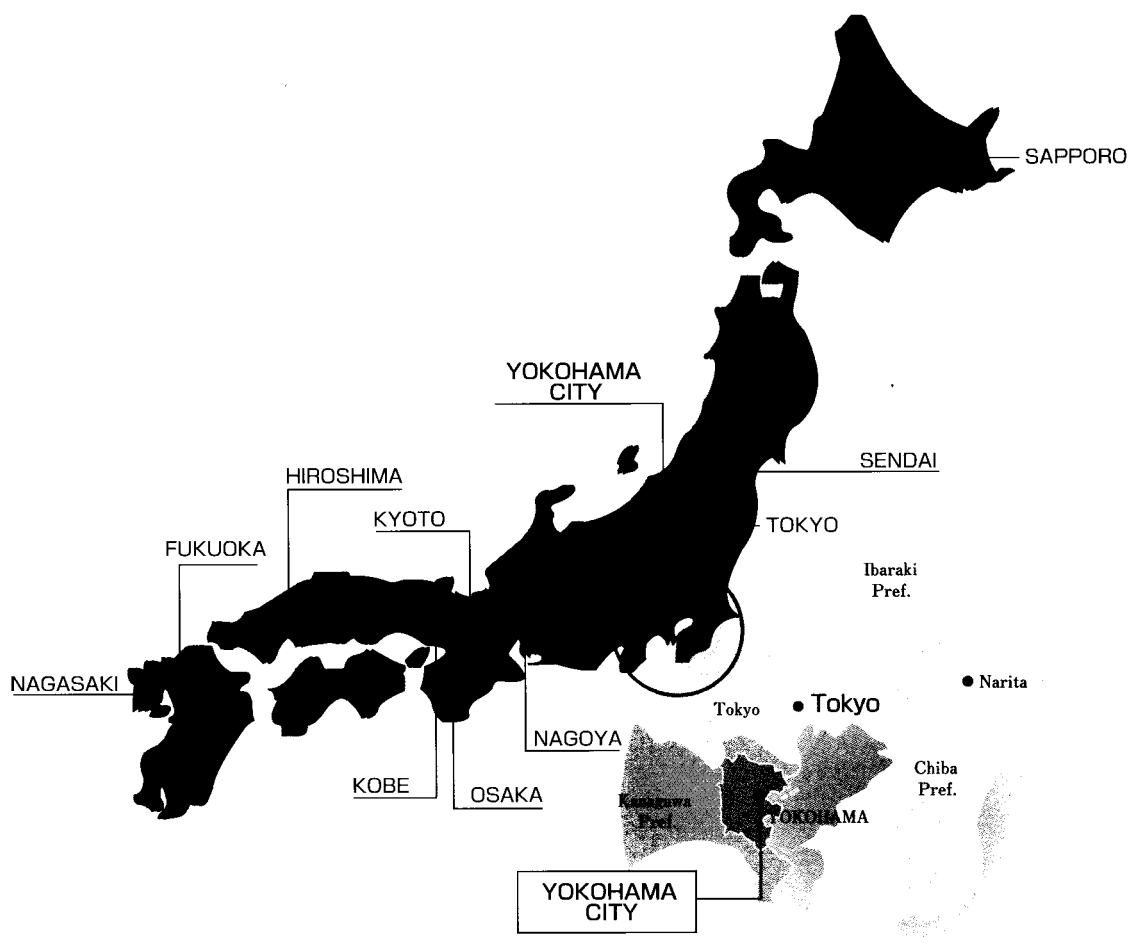
Yokohama, where the main campus of Yokohama National University (YNU) is located, is famous for its international character and history. Yokohama was a tiny fishing village of 100 houses when the Tokugawa Shogunate, forced to abandon its policy of isolation and open its doors to the world, chose Yokohama in 1859 to be one of several ports opened up to Western countries. Trading houses and foreign settlements flourished after the Meiji Restoration as the new imperial government emphasized international trade. Yokohama is proud of its history of introducing Western goods to Japan – the first bakery (1860), photo studio (1862), telephone (1869), beer brewery (1869), cinema (1870), daily newspaper (1870), public restroom (1871), and ice cream (1879).

With a population of about 3.6 million, Yokohama is now the second largest city in Japan and has the nation's largest international trading port. Yokohama is situated on a peninsula on the western coast of Tokyo Bay about 30 km south of Tokyo, the capital of Japan. Yokohama is well-known as an international, cosmopolitan city. Japan's largest Chinatown, the scenic area known as "the Bluff" with historic Western-style homes and the modern, waterfront area all contribute to making Yokohama an exotic juxtaposition of Japanese, Western and Chinese cultures.

Yokohama is also a city of the future. Looking ahead to changes in global trade and economy, the city has an ambitious plan to expand the Port of Yokohama as a logistics hub. Minato-Mirai 21, a completely new urban development along the waterfront area, has a conference center, offices, museums, condominiums, hotels, shops and restaurants. It serves as a center for international companies and high-technology research and development institutes.

Yokohama has four distinct seasons, as does most of Japan. Yokohama enjoys a mild climate throughout the year with an average temperature of 16-17°C. Summer can be muggy, with temperatures exceeding 30°C. The weather in winter is mild with a temperature range of 5-10°C with little snowfall. Spring and fall are very pleasant and a wonderful time for enjoying the outdoors. But Yokohama has something for every season – cherry blossoms in spring, summer festivals, colorful autumn leaves – just to name a few. Every day is an opportunity to enjoy the beautiful sights and enriching experiences of the city of Yokohama.

The Location of Yokohama





Bird's-eye view of the YNU campus

Master's Program in Public Policy and Taxation

**International Graduate School of Social Sciences
Yokohama National University**

79-4 Tokiwadai, Hodogaya-ku, Yokohama 240-8501 JAPAN

Phone: +81-45-339-3510 Fax: +81-45-339-3608

Email: is-mpe@ynu.ac.jp

Website: <http://www.igss.ynu.ac.jp/wb-ppt/index.html>



YOKOHAMA
National University

APPLICATION CHECKLIST

MASTER'S PROGRAM IN PUBLIC POLICY AND TAXATION
YOKOHAMA NATIONAL UNIVERSITY

Use the checklist below to make sure you have completed all the required documentation before submitting your application. This is provided for your information only. **Do not send this checklist in with your application.**

Application deadline is **September 30, 2009**

- Application Form
- Statement of Purpose
- Two Confidential Letters of Recommendation
- Official Academic Transcript
- Official TOEFL/IELTS Score Record or a letter from your undergraduate institution confirming that the primary language of instruction is English.
- Official GRE Score (if available)
- Return Address Label

APPLICATION FORM FOR ADMISSION IN 2010-2011 ACADEMIC YEAR

MASTER'S PROGRAM IN PUBLIC POLICY AND TAXATION

YOKOHAMA NATIONAL UNIVERSITY

PLEASE TYPE OR PRINT CLEARLY

1. Have you previously made an application to the program? No Yes

2. Last Name _____

First Name _____

Middle Name _____

3. Gender Female Male

4. Birth date (month/day/year) _____ / _____ / _____

Age (as of April 1, 2010) _____

5. Country of Citizenship _____

6. Marital Status Single Married

7. Mailing Address

Office

Department _____

Institution _____

Address _____

_____ Zip code _____

Country _____

Phone _____ / _____ / _____

Country code Area code Phone number

Fax _____ / _____ / _____

E-mail _____

Home

Address _____

_____ Zip code _____

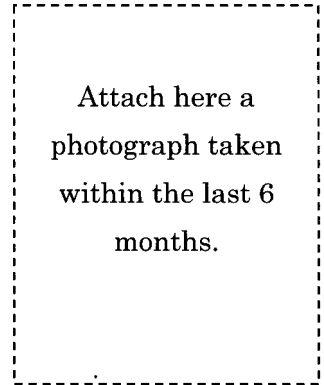
Country _____

Phone _____ / _____ / _____

Country code Area code Phone number

Fax _____ / _____ / _____

E-mail _____



8. Proof of English Proficiency. Please check which of the following you will provide:

TOEFL

IELTS

Official University Letter

Date of test _____

Date of test _____

TOEFL and IELTS must be sent directly from testing centers to YNU.

APPLICATION FORM FOR ADMISSION IN 2010-2011 ACADEMIC YEAR

MASTER'S PROGRAM IN PUBLIC POLICY AND TAXATION

YOKOHAMA NATIONAL UNIVERSITY

9. **Education** List all institutions where you have received or will receive a degree. In addition, list all other post-secondary institutions attended. (Most Recent First)

1. **Institution** _____

Location (city/country) _____

Major Field _____ Degree/Diploma _____

Dates Attended _____ Date Deg Rec'd/Expected _____

2. **Institution** _____

Location (city/country) _____

Major Field _____ Degree/Diploma _____

Dates Attended _____ Date Deg Rec'd/Expected _____

3. **Institution** _____

Location (city/country) _____

Major Field _____ Degree/Diploma _____

Dates Attended _____ Date Deg Rec'd/Expected _____

10. **Employment** (Most Recent First)

1. **Name of Employer** _____

Location (city/country) _____

Position/Title _____

Dates (month/year): from _____ to _____

2. **Name of Employer** _____

Location (city/country) _____

Position/Title _____

Dates (month/year): from _____ to _____

3. **Name of Employer** _____

Location (city/country) _____

Position/Title _____

Dates (month/year): from _____ to _____

11. List other graduate schools you are applying for (if any)

APPLICATION FORM FOR ADMISSION IN 2010-2011 ACADEMIC YEAR

MASTER'S PROGRAM IN PUBLIC POLICY AND TAXATION

YOKOHAMA NATIONAL UNIVERSITY

12. List the major previous scholarships and fellowships you have held both as a graduate and as an undergraduate student.

1. Award Title _____

Institution _____ Dates or Academic Year _____

2. Award Title _____

Institution _____ Dates or Academic Year _____

3. Award Title _____

Institution _____ Dates or Academic Year _____

13. List major academic recognition, honors, and memberships

14. List the names of the people who will be submitting letters of recommendation. Ask the recommenders to use your full name as it appears on your application.

1. Name _____ Title _____

Institution _____

Location (city/country) _____

2. Name _____ Title _____

Institution _____

Location (city/country) _____

15. Person to be notified in applicant's home country in case of emergency

Name _____

Address _____

Phone Number _____ Relationship _____

16. I certify that I have read all instructions and that information in this application is true and complete. I understand that misrepresentation may be cause for canceling my admission. I understand that all credentials and documents I submit become the property of Yokohama National University.

Print Name _____

Signature _____ Date _____

APPLICATION FORM FOR ADMISSION IN 2010-2011 ACADEMIC YEAR

MASTER'S PROGRAM IN PUBLIC POLICY AND TAXATION

YOKOHAMA NATIONAL UNIVERSITY

STATEMENT OF PURPOSE (1,200 words or less)

Please type or print.

Print Name _____

Signature _____

Date _____

RECOMMENDATION FOR ADMISSION
MASTER'S PROGRAM IN PUBLIC POLICY AND TAXATION
YOKOHAMA NATIONAL UNIVERSITY

Applicant's name (type or print): _____

Family

First

Middle

Note to applicant: Write your name and give this form with an envelope provided to the recommender.

To the recommender: Please complete and sign this form, and seal it in the envelope provided. To ensure confidentiality, please sign in the space designated over the flap of the sealed envelope before returning this form to the applicant.

In addition to responding to the items below, please comment specifically on the applicant's strengths and limitations for graduate study. Please use the back side of this form for your comment or attach a letter. If you do not wish to use this form, please include the full name of the student as it appears above to ensure that your recommendation will be added to the correct applicant file.

1. How long and in what capacity have you known the applicant?

2. Please rate the applicant in comparison with others whom you have known at similar stages in their careers.

	Exceptional Upper 5%	Outstanding Next 15%	Very Good Next 15%	Good Next 15%	Next 50%	No Basis for Judgment
Knowledge in the field of economics	<input type="checkbox"/>	<input type="checkbox"/>	<input type="checkbox"/>	<input type="checkbox"/>	<input type="checkbox"/>	<input type="checkbox"/>
Motivation and perseverance toward goals	<input type="checkbox"/>	<input type="checkbox"/>	<input type="checkbox"/>	<input type="checkbox"/>	<input type="checkbox"/>	<input type="checkbox"/>
Ability to work independently	<input type="checkbox"/>	<input type="checkbox"/>	<input type="checkbox"/>	<input type="checkbox"/>	<input type="checkbox"/>	<input type="checkbox"/>
Ability to show thoughts in speech/writing	<input type="checkbox"/>	<input type="checkbox"/>	<input type="checkbox"/>	<input type="checkbox"/>	<input type="checkbox"/>	<input type="checkbox"/>
Ability to plan and conduct research	<input type="checkbox"/>	<input type="checkbox"/>	<input type="checkbox"/>	<input type="checkbox"/>	<input type="checkbox"/>	<input type="checkbox"/>

3. Please indicate the strength of your overall endorsement by placing an "X" along the scale.

Highly recommended Recommended Recommended with some reservations Not Recommended

Print Name _____

Signature _____

Date _____

Title _____ Institution _____

Address _____

Phone Number _____

E-mail _____

RECOMMENDATION FOR ADMISSION

MASTER'S PROGRAM IN PUBLIC POLICY AND TAXATION

YOKOHAMA NATIONAL UNIVERSITY

Applicant's name (type or print): _____

Family

First

Middle

Note to applicant: Write your name and give this form with an envelope provided to the recommender.

To the recommender: Please complete and sign this form, and seal it in the envelope provided. To ensure confidentiality, please sign in the space designated over the flap of the sealed envelope before returning this form to the applicant.

In addition to responding to the items below, please comment specifically on the applicant's strengths and limitations for graduate study. Please use the back side of this form for your comment or attach a letter. If you do not wish to use this form, please include the full name of the student as it appears above to ensure that your recommendation will be added to the correct applicant file.

1. How long and in what capacity have you known the applicant?

2. Please rate the applicant in comparison with others whom you have known at similar stages in their careers.

	Exceptional Upper 5%	Outstanding Next 15%	Very Good Next 15%	Good Next 15%	Next 50%	No Basis for Judgment
--	-------------------------	-------------------------	-----------------------	------------------	----------	--------------------------

Knowledge in the field of economics	<input type="checkbox"/>	<input type="checkbox"/>	<input type="checkbox"/>	<input type="checkbox"/>	<input type="checkbox"/>	<input type="checkbox"/>
Motivation and perseverance toward goals	<input type="checkbox"/>	<input type="checkbox"/>	<input type="checkbox"/>	<input type="checkbox"/>	<input type="checkbox"/>	<input type="checkbox"/>
Ability to work independently	<input type="checkbox"/>	<input type="checkbox"/>	<input type="checkbox"/>	<input type="checkbox"/>	<input type="checkbox"/>	<input type="checkbox"/>
Ability to show thoughts in speech/writing	<input type="checkbox"/>	<input type="checkbox"/>	<input type="checkbox"/>	<input type="checkbox"/>	<input type="checkbox"/>	<input type="checkbox"/>
Ability to plan and conduct research	<input type="checkbox"/>	<input type="checkbox"/>	<input type="checkbox"/>	<input type="checkbox"/>	<input type="checkbox"/>	<input type="checkbox"/>

3. Please indicate the strength of your overall endorsement by placing an "X" along the scale.

Highly recommended

Recommended

Recommended with some reservations

Not Recommended

Print Name _____

Signature _____ Date _____

Title _____ Institution _____

Address _____

Phone Number _____ E-mail _____